



16 Waterloo Road, Prestwick

In Excess of £99,000

DONALD
ROSS
RESIDENTIAL



16 Waterloo Road

Prestwick

Desirable ground floor flat with two double bedrooms, spacious lounge, private driveway, and south-facing rear garden. Ideal for first-time buyers, downsizers, or investors.

Council Tax band: B

- Highly sought-after ground floor flat in a convenient location
- Welcoming entrance hall with built-in storage
- Generously proportioned lounge
- Fitted kitchen
- Two spacious double bedrooms
- Bathroom with bath and overhead shower
- Energy-efficient gas central heating and double glazing throughout
- Private driveway with space for two vehicles
- South-facing rear garden, perfect for outdoor enjoyment























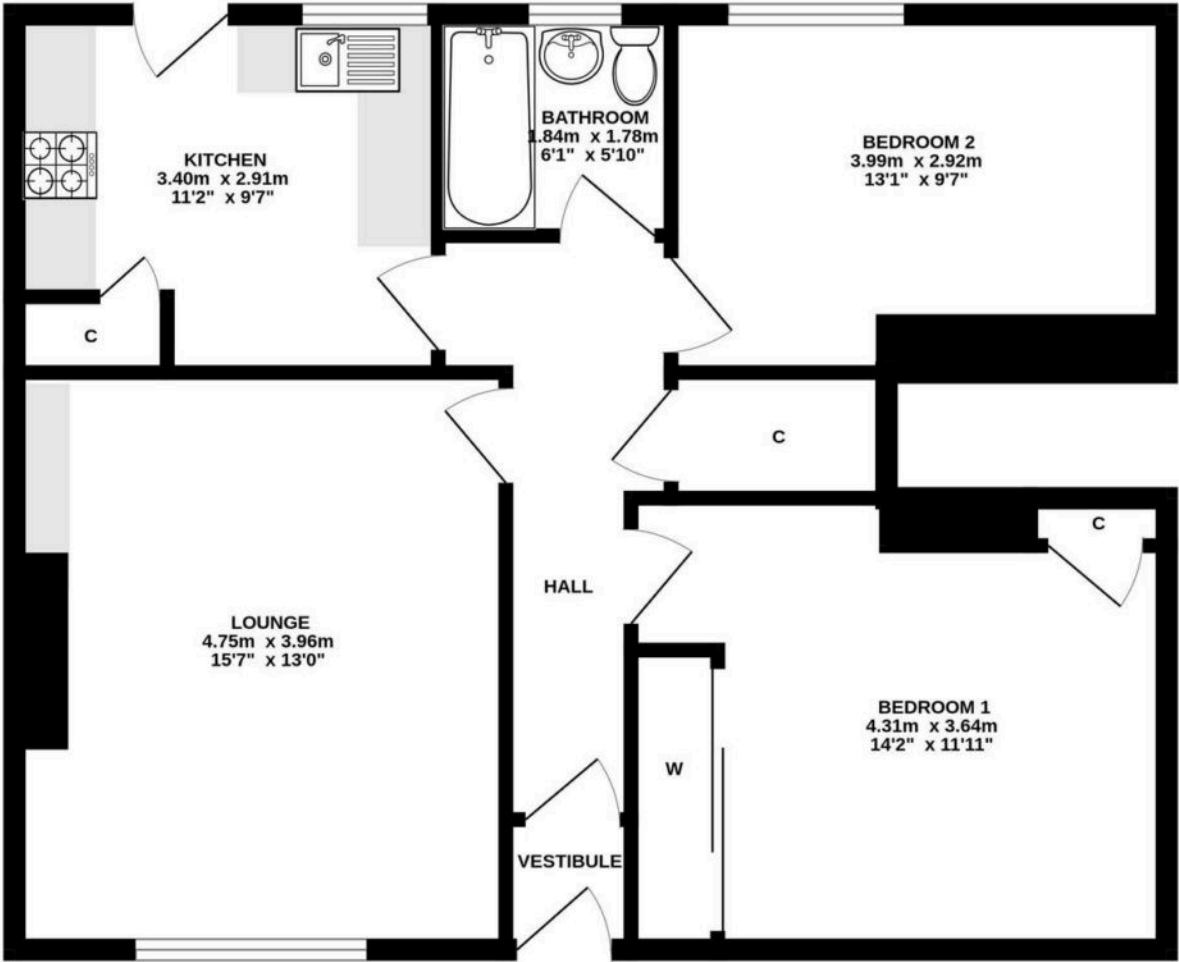








GROUND FLOOR



ALL MEASUREMENTS TAKEN AT WIDEST POINT.

Whilst every attempt has been made to ensure the accuracy of the floorplan contained here, measurements of doors, windows, rooms and any other items are approximate and no responsibility is taken for any error, omission or mis-statement. This plan is for illustrative purposes only and should be used as such by any prospective purchaser. The services, systems and appliances shown have not been tested and no guarantee as to their operability or efficiency can be given.
Made with Metropix ©2025



Donald Ross Residential Ayr

Donald Ross, 1 Beresford Terrace - KA7 2ER

01292 288222 • office@donaldross.co.uk • www.donaldross.co.uk

While every effort has been made to ensure accuracy, buyers should independently verify all details and review the Home Report before submitting an offer. No warranty or representation is given regarding the property, and neither the agent nor the seller accepts responsibility for any inaccuracies. Buyers must satisfy themselves on all legal aspects.