



Chamberlain Close, Ilford, IG1 1JQ

Offers In Excess Of £215,000









# Chamberlain Close

Ilford, IG1 1JQ

- EPC RATING D
- Lounge
- Bathroom
- Close to Town Centre
- Ground floor flat
- Kitchen
- Circa 104 year lease
- CHAIN FREE

Welcome to this charming flat located on Chamberlain Close in the vibrant area of Ilford. This delightful property features one well-proportioned bedroom, making it an ideal choice for individuals or couples seeking a comfortable living space. The flat boasts a spacious reception room, perfect for relaxing or entertaining guests, and a bathroom that caters to all your daily needs.

Situated in a convenient location, this flat offers easy access to local amenities, including shops, restaurants, and public transport links, ensuring that you are well-connected to the wider area. The surrounding neighbourhood is known for its friendly community atmosphere, making it a lovely place to call home.

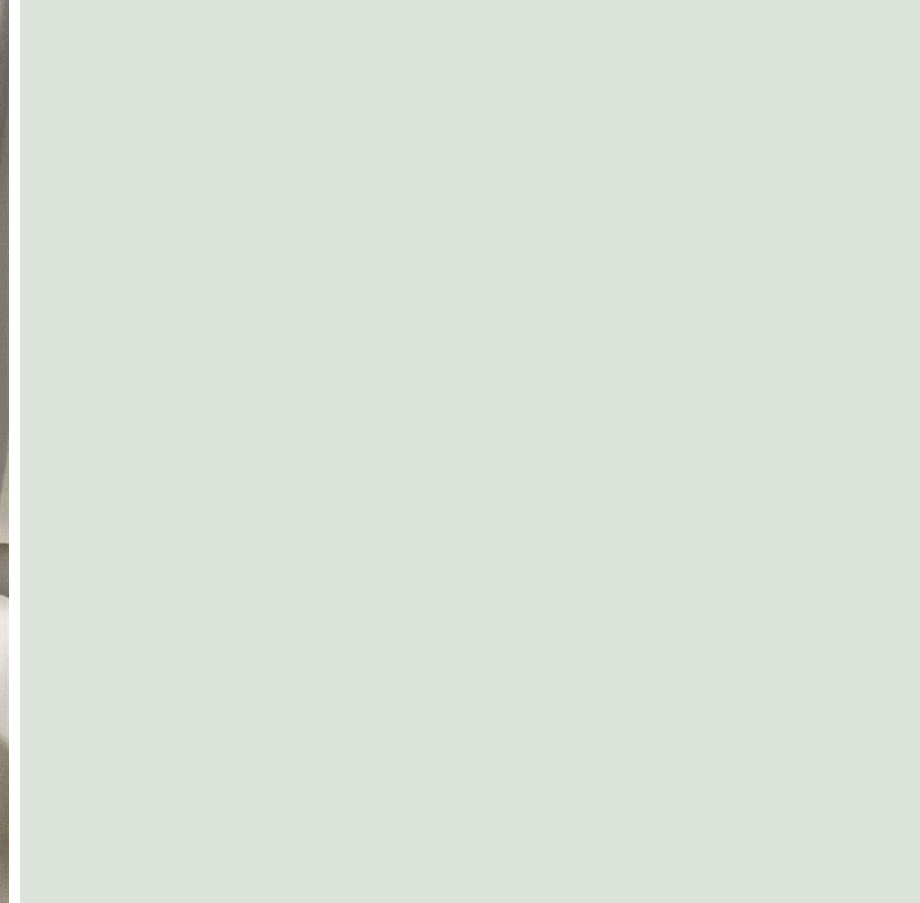
Whether you are a first-time buyer or looking to downsize, this flat presents a wonderful opportunity to enjoy a low-maintenance lifestyle in a sought-after location. With its appealing features and prime position, this property is not to be missed. We invite you to come and explore the potential of this lovely flat in Ilford.



Offers In Excess Of £215,000



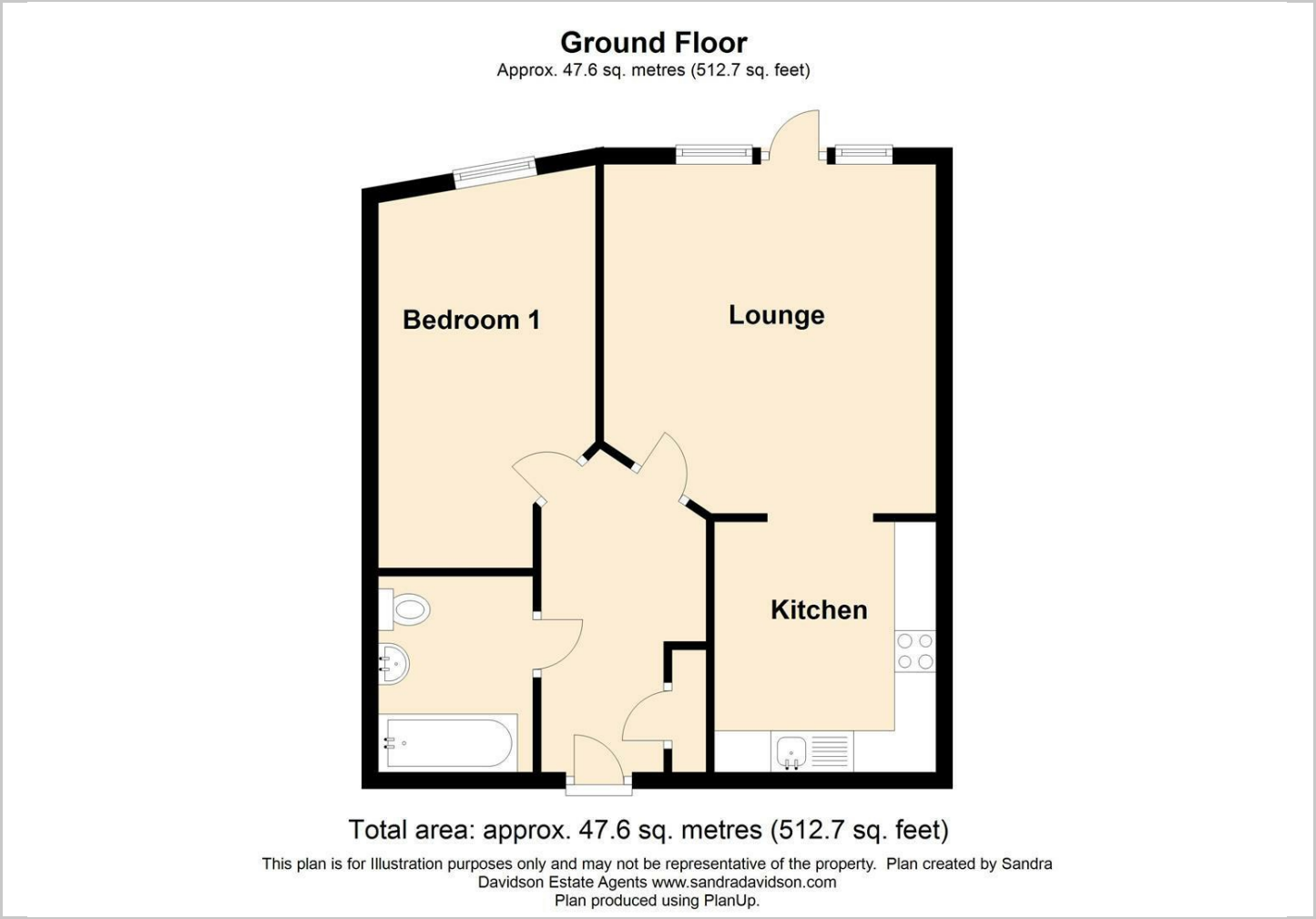
ENTRANCE	
LOUNGE	15'1" x 13'1" (4.62m x 4.01m)
KITCHEN	8'6" x 6'9" (2.61m x 2.06m)
BEDROOM ONE	12'7" x 10'0" (3.84m x 3.05m)
BATHROOM	6'6" x 6'2" (1.99m x 1.90m)
AGENTS NOTE	



[Directions](#)



Floor Plans



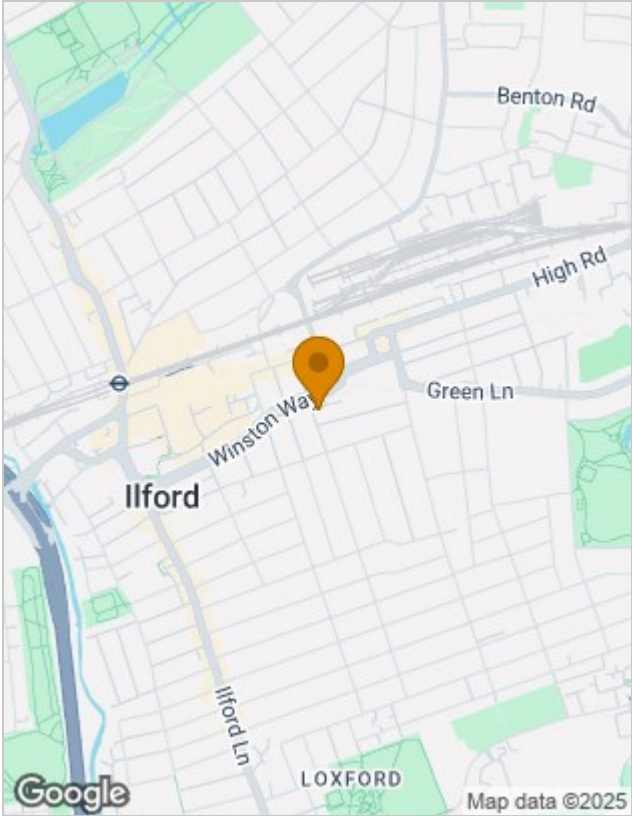
Viewing

Please contact our Seven Kings Sales Office on 020 8597 7372 if you wish to arrange a viewing appointment for this property or require further information.

The particulars are set out as a general outline only for the guidance of intended purchasers or lessees, and do not constitute, any part of a contract. Nothing in these particulars shall be deemed to be a statement that the property is in good structural condition or otherwise nor that any of the services, appliances, equipment or facilities are in good working order. Purchasers should satisfy themselves of this prior to purchasing.

353 Green Lane, Seven Kings, Essex, IG3 9TH  
Tel: 020 8597 7372 Email: [sevenkings@sandradavidson.com](mailto:sevenkings@sandradavidson.com) <https://www.sandradavidson.com>

Location Map



Energy Performance Graph

