



30 Easternville Gardens

, Ilford, IG2 6AB

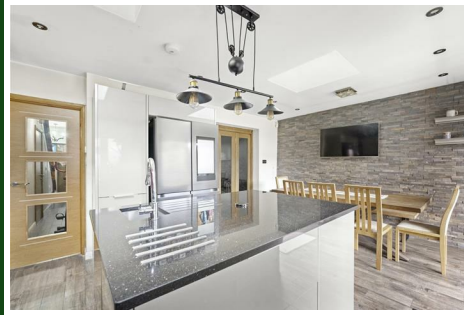
Offers In Excess Of £700,000



30 Easternville Gardens

, Ilford, IG2 6AB

Offers In Excess Of £700,000





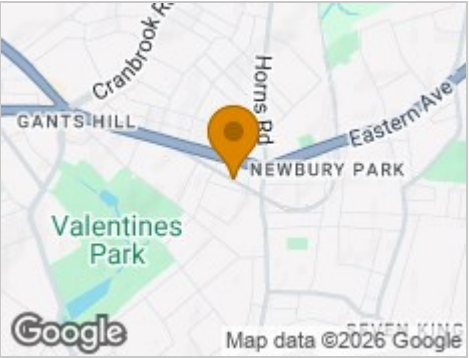
Road Map



Hybrid Map



Terrain Map



Floor Plan

Easternville Gardens, IG2

Approx. Gross Internal Area 1564 Sq Ft - 145.30 Sq M
Approx. Gross Eaves Storage/Shed Area 181 Sq Ft - 16.81 Sq M

First Floor
Floor Area 491 Sq Ft - 45.61 Sq M

Second Floor
Floor Area 295 Sq Ft - 27.41 Sq M
(Excluding Eaves Storage)

Ground Floor
Floor Area 778 Sq Ft - 72.28 Sq M

Measured according to RICS IPMS2. Floor plan is for illustrative purposes only and is not to scale. Every attempt has been made to ensure the accuracy of the floor plan shown, however all measurements, fixtures, fittings and data shown are an approximate interpretation for illustrative purposes only. 1 sq m = 10.76 sq feet.

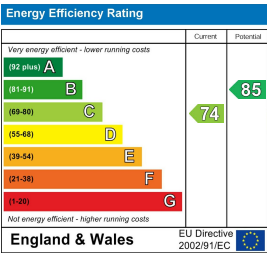
ipaplus.com

Date: 7/1/2026

Viewing

Please contact our Redbridge Sales Office on 020 8551 0211 if you wish to arrange a viewing appointment for this property or require further information.

Energy Efficiency Graph



These particulars, whilst believed to be accurate are set out as a general outline only for guidance and do not constitute any part of an offer or contract. Intending purchasers should not rely on them as statements of representation of fact, but must satisfy themselves by inspection or otherwise as to their accuracy. No person in this firms employment has the authority to make or give any representation or warranty in respect of the property.