



Headley Drive, Ilford, IG2 6QJ

£2,250 Per Calendar Month



£2,250 Per Calendar Month

Headley Drive

Iford, IG2 6QJ

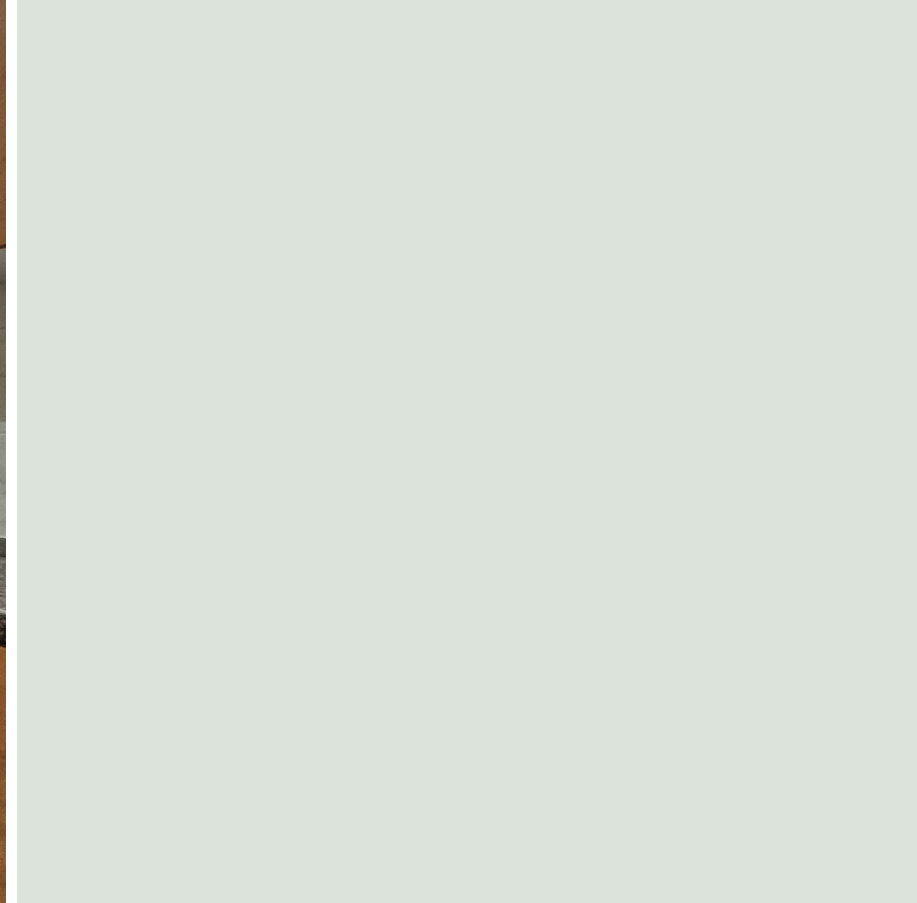
- Through Lounge Reception
- Three Bedrooms
- Gas Central Heating
- Parking for Two Cars
- AVAILABLE NOW!!
- Extended Kitchen
- First Floor Bathroom
- Double Glazed
- Large Rear Garden

Sandra Davidson Estate Agents are pleased to present for let this three bedroom house located within close proximity of Gants Hill Central Line station. The property comprises: three bedrooms, through lounge reception room, extended kitchen with dining area, first floor family bathroom plus a separate WC. The property also benefits from gas central heating, double glazing, off street parking for two cars and a large rear garden.

The property is available NOW and comprises:-



Entrance Hall	
Reception	29'1" x 12'6" (8.87m x 3.80m)
Kitchen/Diner	19'8" x 10'5" (6.00m x 3.17m)
Porch	
Bedroom 1	13'1" x 11'1" (3.99m x 3.37m)
Bedroom 2	11'11" x 11'1" (3.63m x 3.37m)
WC	
Bathroom	
Landing	
Bedroom 3	7'3" x 7'8" (2.20m x 2.33m)

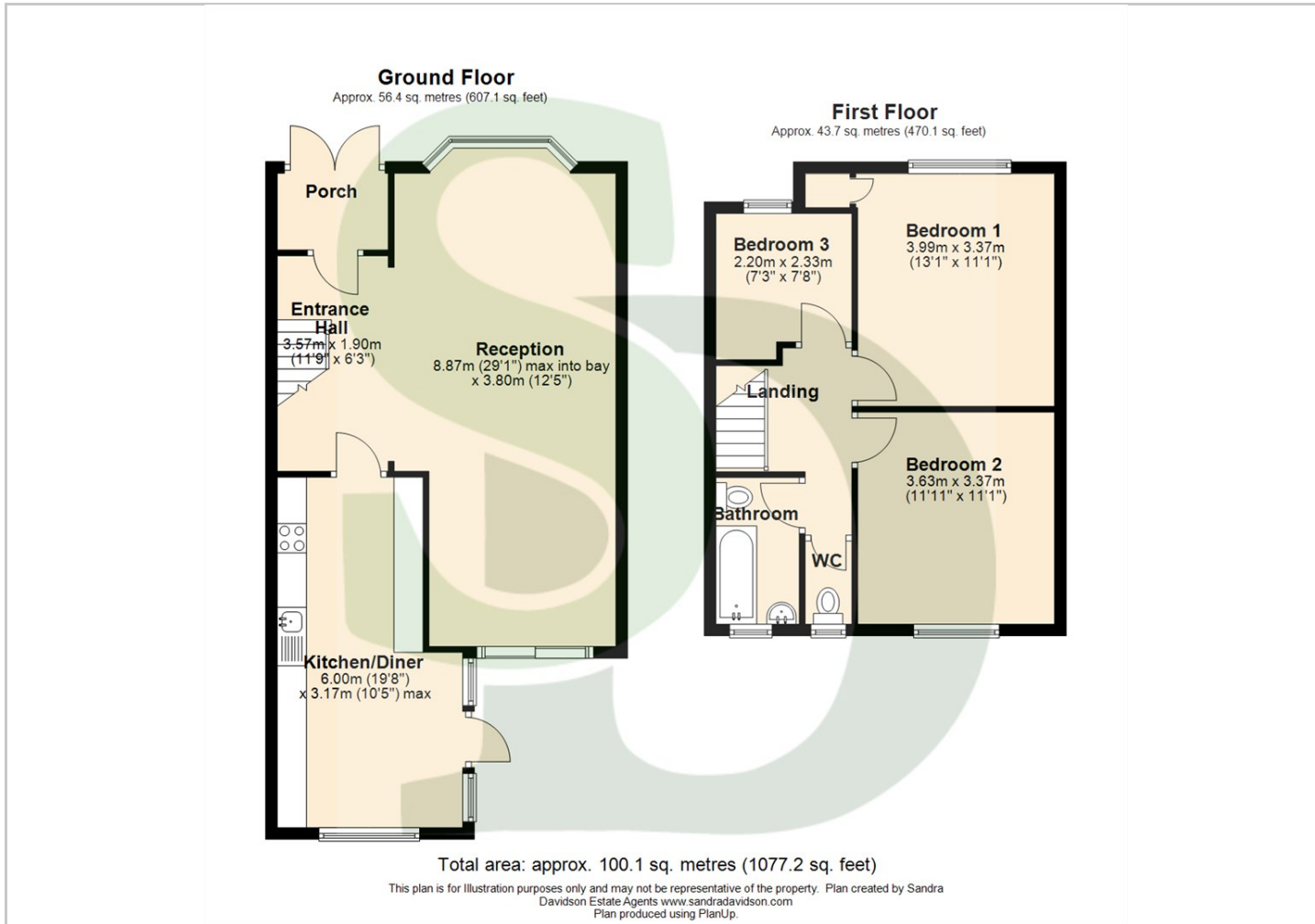


Directions

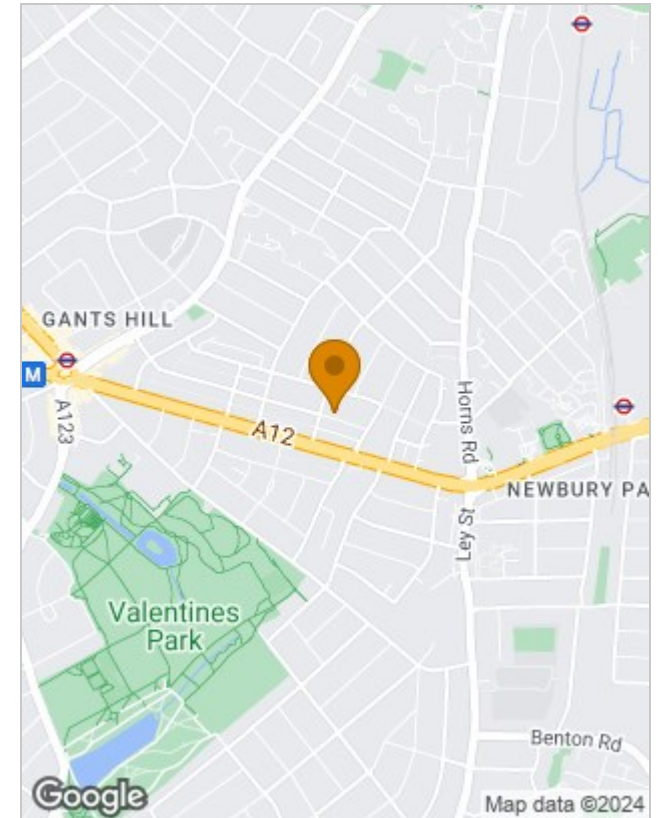




Floor Plans



Location Map



Energy Performance Graph

Energy Efficiency Rating		
	Current	Potential
Very energy efficient - lower running costs		
(92 plus) A		
(81-91) B		
(69-80) C		
(55-68) D		
(39-54) E		
(21-38) F		
(1-20) G	1	1
Not energy efficient - higher running costs		
England & Wales	EU Directive 2002/91/EC	

Viewing

Please contact our Redbridge Lettings Office on 020 8551 0211 if you wish to arrange a viewing appointment for this property or require further information.

The particulars are set out as a general outline only for the guidance of intended purchasers or lessees, and do not constitute, any part of a contract. Nothing in these particulars shall be deemed to be a statement that the property is in good structural condition or otherwise nor that any of the services, appliances, equipment or facilities are in good working order. Purchasers should satisfy themselves of this prior to purchasing.