



## 42 Eastgate

Beverley, HU17 0DT

£199,950

A hugely characterful Grade II Listed cottage located in the heart of Beverley town centre, only a stone's throw away from the stunning Minster and a short walk to Wednesday Market and the vibrant facilities available within this lovely market town.

The cottage is deceptively spacious offering two bedroomed accommodation over three floors, but also benefiting from an enclosed rear paved garden.

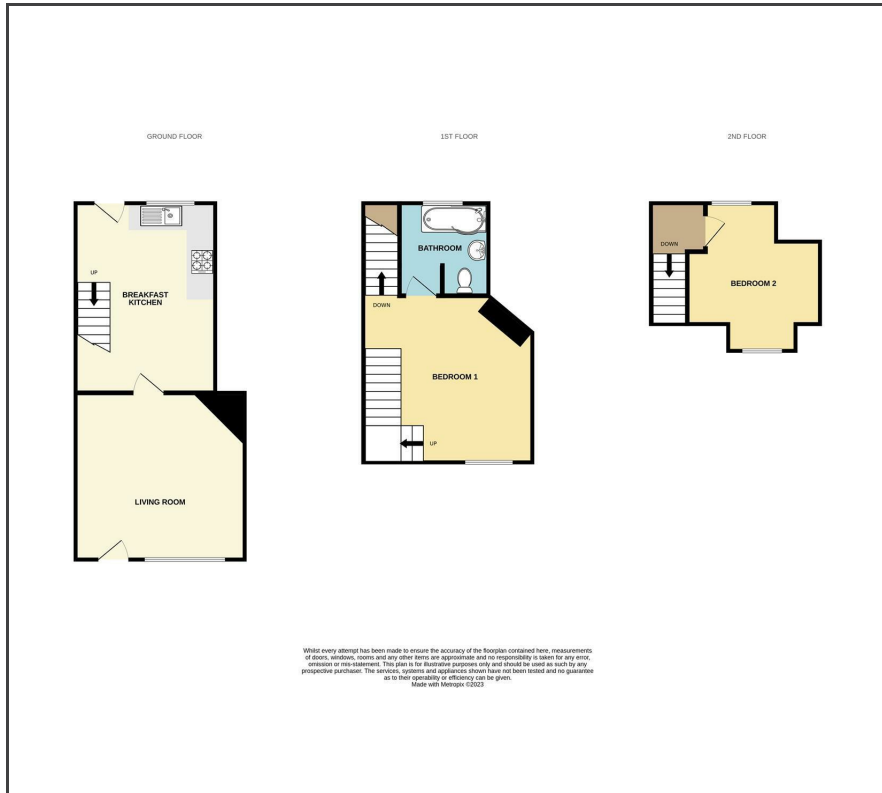
This really is a most delightful cottage that would make a superb home or even lock up & leave for those wishing to divide their time in Beverley.

- A hugely characterful cottage
- Grade II Listed
- Stone's throw from Minster
- Short walk to Wednesday Market
- Deceptively spacious
- Two bedrooms
- Arranged over three floors
- Excellent lock up & leave
- Rear paved garden
- Council tax: B, EPC: D

### Viewing

Please contact our Q & C Beverley Office on 01482 886200 if you wish to arrange a viewing appointment for this property or require further information.

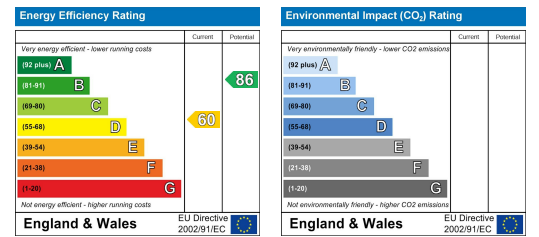
## Floor Plan



## Area Map



## Energy Efficiency Graph



VIEWS Strictly by appointment through the Sole Agent's Beverley Office on 01482 886200. The mention of any appliances &/or services within these sales particulars does not imply they are in full and efficient working order. ALL MEASUREMENTS ARE APPROXIMATE & FOR GUIDANCE ONLY We endeavour to make our sale details accurate & reliable, but if there is any point which is of particular importance to you, please contact the office and we will be pleased to check the information. Do so, particularly if contemplating travelling some distance to view the property. NONE OF THE STATEMENTS CONTAINED IN THESE PARTICULARS ARE TO BE RELIED UPON AS STATEMENT OR REPRESENTATION OF FACT. These sales particulars are based on an inspection made at the time of instruction and are intended to give a general description of the property at the time.