



## 4, Richmond Park

Little Weighton Road, Walkington, HU17 8FE

**£850,000**

An outstanding bespoke property situated in a tucked away position on the South Side of Walkington. Set against the peaceful backdrop of mature trees and yet within easy walking distance of the village centre, Richmond Park offers all the sought-after elements that guarantee a perfectly balanced lifestyle.

With a luxuriously high specification and a beautifully designed interior, the property boast open plan living, filled with natural light.

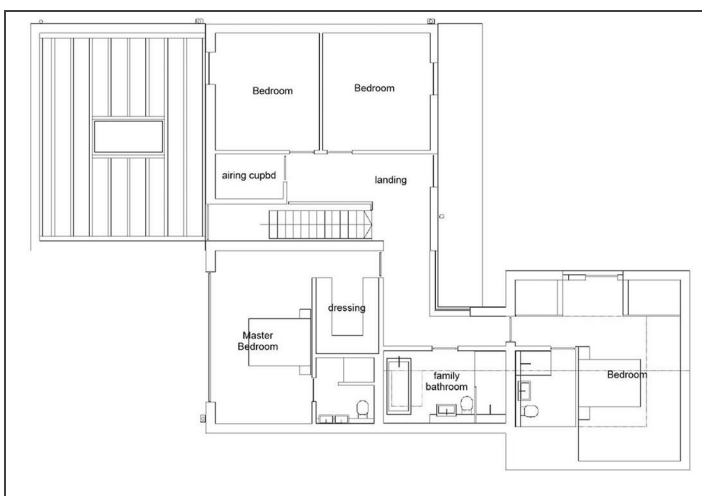
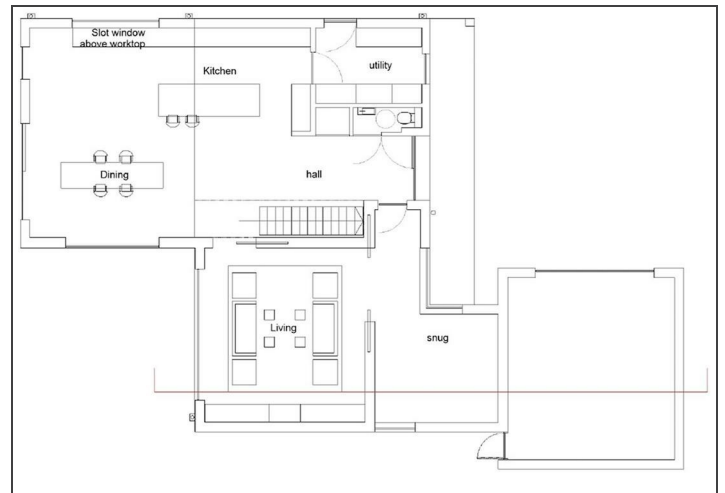
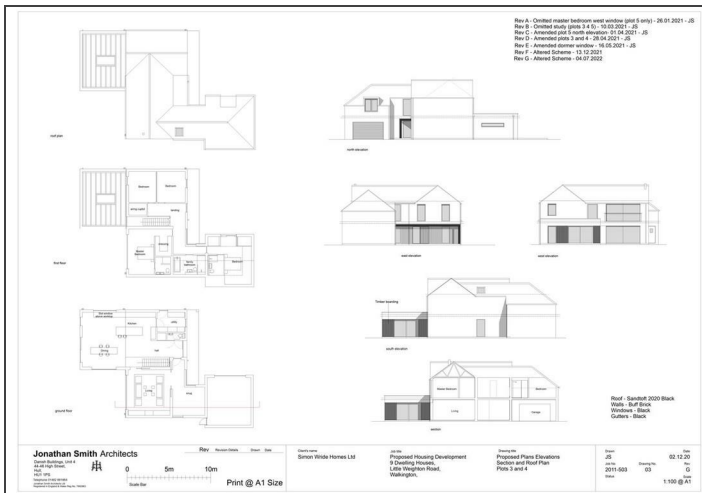
Situated on a generous sized plot with an ideal Westerly aspect to the rear garden, the house also boasts a double garage and large private driveway.

One of nine exclusive homes on this fabulous site, early interest is now invited.

### Viewing

Please contact our Q & C Beverley Office on 01482 886200 if you wish to arrange a viewing appointment for this property or require further information.

- Exclusive Bespoke Design
- Luxuriously High Specification
- Adjacent to Open Fields
- Renowned Local Builder
- Sought After Village with Amenities
- Generous Sized Plot
- Westerly Aspect to Rear Garden
- Double Garage with Private Drive
- Fabulous Light, Bright Open Plan Design
- EPC: TBC



## LOCATION

The property is located on the exclusive development of Richmond Park which lies on the South Western edge of this extremely popular Yorkshire Wolds village. Local amenities are a convenient walk away and include include a Post Office and Village Grocer, three highly regarded Public Houses, Primary School and sporting facilities. Lying approximately two miles from the centre of Beverley and accessed over the Westwood Pastures, the village is situated 46 miles East of Leeds, Humberside Airport 19 miles, Doncaster/Sheffield Airport 34 miles, York 28 miles and Hull 7.5 miles.

VIEWINGS Strictly by appointment through the Sole Agent's Beverley Office on 01482 886200. The mention of any appliances &/or services within these sales particulars does not imply they are in full and efficient working order. ALL MEASUREMENTS ARE APPROXIMATE & FOR GUIDANCE ONLY We endeavour to make our sale details accurate & reliable, but if there is any point which is of particular importance to you, please contact the office and we will be pleased to check the information. Do so, particularly if contemplating travelling some distance to view the property. NONE OF THE STATEMENTS CONTAINED IN THESE PARTICULARS ARE TO BE RELIED UPON AS STATEMENT OR REPRESENTATION OF FACT. These sales particulars are based on an inspection made at the time of instruction and are intended to give a general description of the property at the time.