





THE DUNES , LEVERLAKE ROAD

Widemouth Bay, Bude, Cornwall, EX23 0AF

Price £885,000

- Contemporary detached house built by the award winning Claydon Builders
- Open plan kitchen/living/dining room with wood burner and 'Max Marshall' design kitchen
- Walking distance of Widemouth Bay beach and coastline
- Four generous double bedrooms, two of which with dressing rooms and ensuite shower rooms
- Block paved off road parking and enclosed gardens to the rear

This architectural home is built with state of the art materials and is energy efficient thanks to the highly insulated method of construction, solar PV panels with battery pack storage and air source heat pump central heating and hot water system.

This high specification property benefits from underfloor heating throughout the ground and first floors, 'Origin' aluminium double glazing, steel guttering, slate roof and a blend of render, natural Cornish stone and horizontal and vertical Japanese cedar cladding.

Internally the property offers an entrance hall with oak and glass feature staircase, large semi open plan kitchen/living/dining room with wood burner, 'Max Marshall' design kitchen with integrated appliances, cloakroom and utility.

There is a stunning ground floor guest bedroom with spacious double bedroom and sliding doors leading out to the garden, dressing room and well appointed ensuite shower. On the first floor there are three further spacious double bedrooms, with dressing room and en-suite to the principal bedroom and separate bathroom.

Outside to the front there is block paved off road parking with electric car charge point, Cornish stone hedge wall with planting, whilst to the rear the enclosed garden is laid to gravel with a large seating area which can be accessed via the kitchen/dining/living room and bedroom two.





ENTRANCE HALL

20' 1" x 8' 8" (6.12m x 2.64m) Entering via a anthracite double glazed door to the entrance hall with contemporary oak staircase with glass balustrade ascending to the first floor, inset lighting and Porcelanosa tiled flooring with underfloor heating and recessed mat well. Door to cupboard housing the underfloor heating manifolds. Doors serve the following rooms:-

LIVING ROOM

16' 2" x 15' 4" (4.93m x 4.67m) Twin aluminium double glazed windows to front elevation, inset lighting with feature central pendant, contemporary wood burner with log store to side, high level television aerial, data point and socket and Porcelanosa tiled flooring with underfloor heating.

KITCHEN DINING ROOM

20' 00" x 15' 9" (6.1m x 4.8m) A spacious room with feature anthracite aluminium double glazed letterbox window to the side and 9ft 8' wide sliding doors overlooking and leading out onto the terrace seating area and garden. Inset lighting, three feature pendants over the island and Porcelanosa tiled flooring with underfloor heating.

'Max Marshall' design kitchen with a range matching light ash units and larder style cupboards, Dekton worksurface with incut drainer, under mounted sink with Quooker tap and a large central island with integrated wine cooler. Integrated De Dietrich appliances comprise, venting hob, electric oven, oven/microwave, fridge/freezer and dishwasher.

UTILITY ROOM

8' 6" x 4' 11" (2.59m x 1.5m) Anthracite aluminium double glazed window to the front elevation, fitted base units with worksurface, inset stainless steel sink with mixer tap, space and plumbing for washing machine and Porcelanosa tiled flooring with underfloor heating. Door to:-

CLOAKROOM

7' 10" x 3' 3" (2.39m x 0.99m) Anthracite aluminium double glazed satin window to the side elevation, wall hung vanity unit with inset basin Vado brassware, wall hung toilet bowl and Porcelanosa floor tiling with underfloor heating.

BEDROOM TWO

13' 4" x 11' 10" (4.06m x 3.61m) Anthracite aluminium double glazed window and sliding doors to the rear elevation overlooking and leading out onto the terrace seating area and garden. High level socket, data point and Porcelanosa floor tiling with underfloor heating.

DRESSING ROOM

8' 7" x 7' 1" (2.62m x 2.16m) Porcelanosa floor tiling with underfloor heating and pocket door leading to:-

ENSUITE

8' 7" x 7' 1" (2.62m x 2.16m) Anthracite aluminium double glazed satin window to the side elevation, double shower with ceiling mounted rainfall shower head and separate hand attachment, wall hung vanity unit with inset basin, Vado brassware, wall hung toilet bowl and Porcelanosa wall and floor tiling with underfloor heating.

FIRST FLOOR

Large feature roof light, underfloor heating and door to cupboard housing the pressurised hot water cylinder, underfloor heating manifolds and battery pack storage. Doors serve the following rooms:-

BEDROOM ONE

17' 9" x 14'5 max' 11'7 min" (5.41m x 4.55m) Anthracite aluminium double glazed window to the rear elevation overlooking the garden, Velux window, high level socket, data point and underfloor heating. Door to:-

DRESSING ROOM

11' 9" x 7' 10" (3.58m x 2.39m) Velux window to the side elevation, underfloor heating and pocket door leading to:-

ENSUITE

10' 9" x 7' 9" (3.28m x 2.36m) rainfall shower head and separate hand attachment, wall hung vanity unit with inset basin, Vado brassware, wall hung toilet bowl and Porcelanosa wall and floor tiling with underfloor heating.

BEDROOM THREE

15' 5" x 12' 2" (4.7m x 3.71m) Twin anthracite aluminium double glazed windows to the rear elevation, Velux window to the side, high level socket, data point and underfloor heating.

BEDROOM FOUR

15' 7" x 11' 00" (4.75m x 3.35m) Anthracite aluminium double glazed window to the front elevation, high level socket, data point and underfloor heating.

BATHROOM

9' 7" x 7' 10" (2.92m x 2.39m) Velux window to the side elevation, double ended bath with central filler, double shower enclosure with rainfall shower head and separate hand attachment, wall hung vanity unit with inset basin, Vado brassware, wall hung toilet bowl and Porcelanosa wall and floor tiling with underfloor heating.

OUTSIDE

To the front of the property there is a Cornish stone hedge wall with planting and block paved driveway with electric car charge point, side gated access to the side with fence boundary either side leading to the rear garden with a generous terrace seating area which can be accessed via the sliding doors from Kitchen/living/dining room and bedroom two and is all hard landscaped and laid to gravel for ease of maintenance.

COUNCIL TAX

Band G

SERVICES

Mains water, electricity, drainage. Solar PV panels and air source heat pump central heating.

TENURE

Freehold



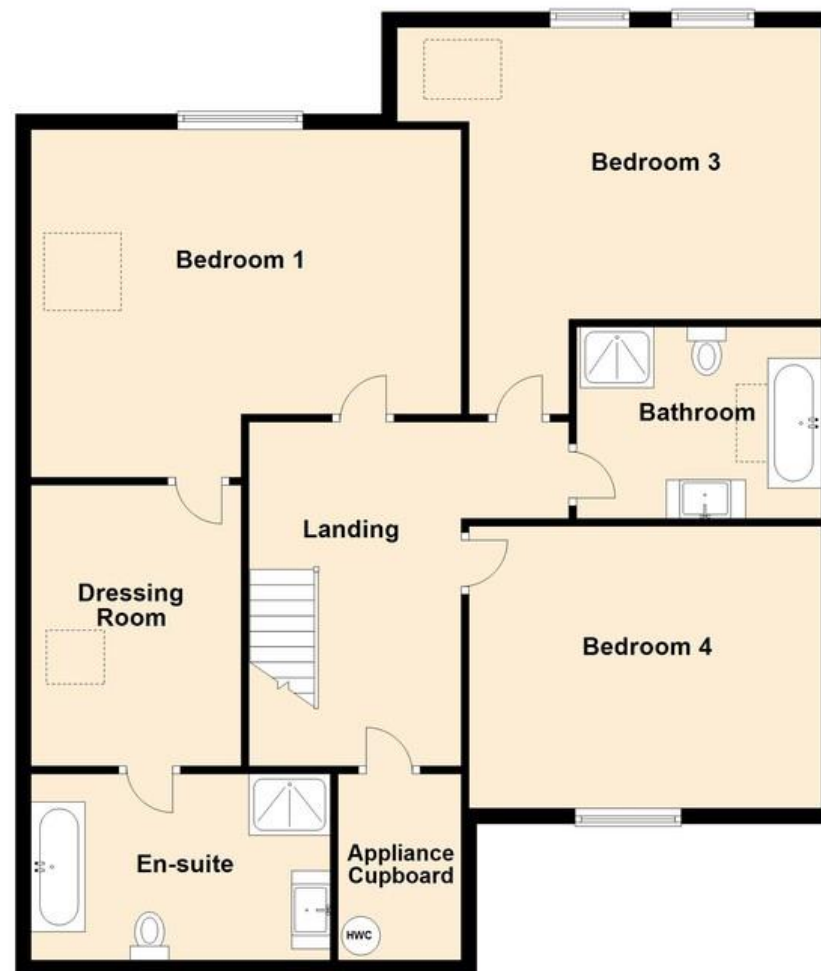
Ground Floor

Approx. 108.3 sq. metres (1166.1 sq. feet)



First Floor

Approx. 108.3 sq. metres (1166.0 sq. feet)



Total area: approx. 216.7 sq. metres (2332.0 sq. feet)

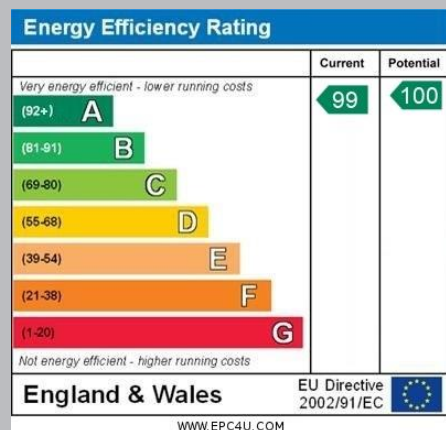
Colwills
Plan produced using PlanUp.





DISCLAIMER: Whilst we as agents endeavour to ensure the accuracy of property details produced and displayed, we have not tested any apparatus, equipment, fixtures and fittings or services and so cannot verify that they are connected, in working order or fit for the purpose. A buyer is advised to obtain verification from their solicitor or surveyor. References to the tenure of the property are based on the information by the seller. The agent has not had sight of the title document. The buyer is advised to obtain verification from their solicitor. Items shown in photographs are NOT included unless specifically mentioned in the sales particulars. They may however be available by separate negotiation. Buyers must check the availability of any property and make an appointment to view before embarking on any journey to see a property.

FLOOR PLANS & MAPS: Please note that if floor plans are displayed they are intended as a general guide



01288 355828
E: bude@colwills.co.uk
www.colwills.co.uk

32 Queen Street
Bude, Cornwall
EX23 8BB

