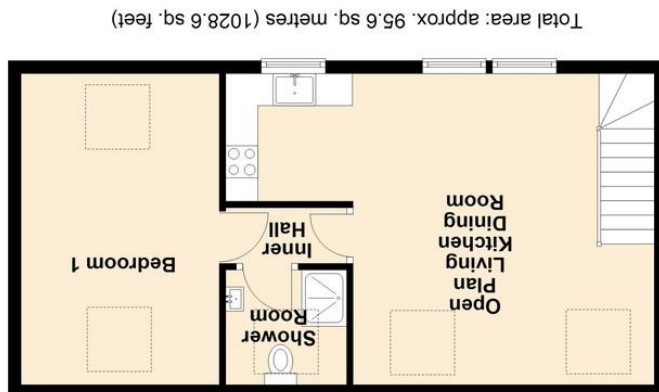
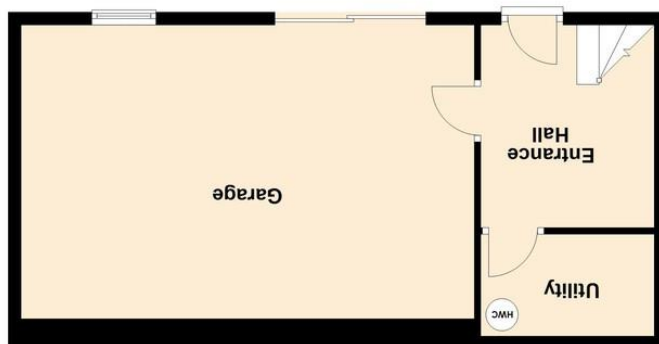


STIMLO 

01288 355 828
E: bude@colwills.co.uk
www.colwills.co.uk
32 Queen Street
Bude, Cornwall
EX23 8BB



Total area: approx. 95.6 sq. metres (1028.6 sq. feet)



First Floor
Approx. 47.8 sq. metres (514.3 sq. feet)

Ground Floor
Approx. 47.8 sq. metres (514.3 sq. feet)

The Property Professionals...



The Boat House , The Harbour

Boscastle, Cornwall , PL35 0AG

Price £350,000

- Well presented, charming semi detached cottage
- Arguably one of the most special locations, within the harbour of Boscastle
- Open plan kitchen/living/dining room with vaulted ceilings
- Spacious double bedroom, modern shower room
- Utility, garage. Off road parking and paved garden with views down to the harbour



The property professionals

