



23 Cedarcroft Road, Beacon Park, Plymouth, Devon, PL2 3JX

Offers Over £280,000

Lang Town and Country are pleased to offer to the market with no onward chain, this 3 bedroom semi-detached home situated in Beacon Park, within walking distance to the highly regarded Montpelier Primary School, Plymouth Life Centre and Central Park.

Step inside this beautifully arranged three-bedroom family home, ready for its next owners to move straight in. The property welcomes you through a handy porch that leads into a bright hallway, opening into a generous lounge at the front of the home. With its large bay-style window and well-proportioned layout, this room provides an inviting space for relaxing or entertaining.

Moving through the ground floor, the home flows into a spacious dining room, perfectly positioned at the heart of the property. Its size and shape lend themselves effortlessly to family meals or dinner gatherings, with direct access through to the kitchen. The kitchen stretches the depth of the property, offering ample worktop space and plenty of storage.

Upstairs, the landing connects three comfortable bedrooms and the family bathroom. The master bedroom sits at the front and enjoys generous proportions with an ensuite shower room, while the second bedroom at the rear also offers excellent space and natural light. A well-designed third bedroom provides additional flexibility, ideal as a child's room, guest room, or dedicated home office. The family bathroom, complete with a bath, separate shower cubicle, wash hand basin and WC complete this level.

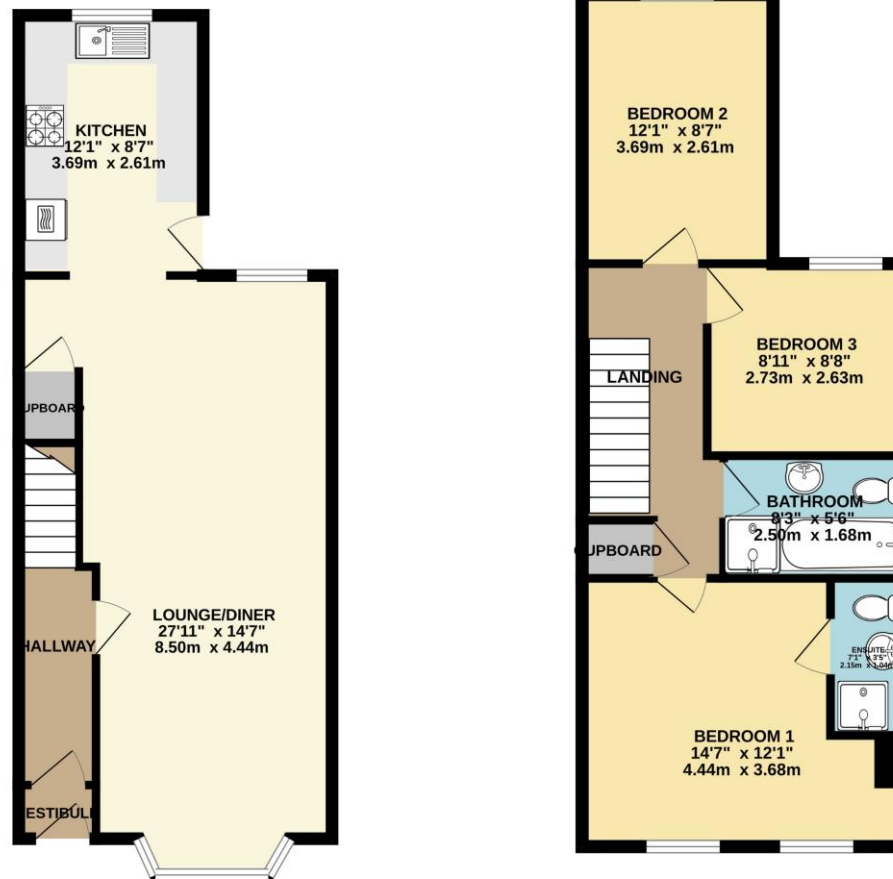
Outside, there is a private low maintenance, enclosed rear garden which is laid with decking, patio and artificial grass.

Throughout, the home feels well-balanced and thoughtfully arranged, with every room benefiting from practical proportions. With its chain-free status, this property allows for a smooth and straightforward purchase, perfect for first-time buyers, families, or anyone seeking a hassle-free move.



To view this property call Lang Town & Country Estate Agents on **01752 256000**.





TOTAL FLOOR AREA: 982 sq. ft. (91.2 sq. m.) approx.
 Whilst every attempt has been made to ensure the accuracy of the floorplan contained here, measurements of doors, windows, rooms and any other items are approximate and no responsibility is taken for any error, omission or mis-statement. This plan is for illustrative purposes only and should be used as such by any prospective purchaser. The services, systems and appliances shown have not been tested and no guarantee as to their operability or efficiency can be given.
 Made with Metropix ©2025



Lang Town & Country
 6 Mannamead Road
 Plymouth
 PL4 7AA
 Tel: 01752 256000
 Email: property@langtownandcountry.com
www.langtownandcountry.com

Lang Town & Country endeavour to ensure the accuracy of property details produced and displayed, we have not tested any apparatus, equipment, fixtures, fittings or services and so cannot verify that they are connected, in working order or fit for purpose. A buyer must check the availability of any property and make an appointment to view before embarking on any journey to see a property.

