



Priestfield House, Millpool Head, Millbrook, Torpoint, Cornwall, PL10 1AW

Offers Over £485,000



An architectural masterclass of a home, this immaculate residence delivers contemporary open plan living with generous proportions, striking design and an abundance of natural light. Set within the highly sought after village of Millbrook, the property blends refined modern architecture with a peaceful countryside setting, creating a home of both presence and practicality that must be viewed to be fully appreciated.

You enter through double doors into the impressive kitchen diner, immediately greeted by a bright and contemporary space. Sleek white cabinetry, high end integrated appliances and expansive worktops create a kitchen that is as functional as it is stylish, perfectly suited to both everyday living and entertaining. The space flows effortlessly into the living area, where a modern Morso wood burning stove forms a warm and inviting focal point. Floor to ceiling double glazed windows frame views across the surrounding countryside and flood the room with natural light, while a dramatic double height sunroom elevates the sense of scale and openness, providing direct access onto the south westerly facing decking.

The first floor offers two generous bedrooms, both finished with vaulted ceilings, exposed beams and well-appointed en suite bathrooms. The rear bedroom benefits from French doors opening onto a private enclosed terrace, offering a tranquil retreat. The principal bedroom is particularly spacious and provides the potential to be divided to create a third bedroom, should additional accommodation be required.

The property is further enhanced by two substantial double garages, each fitted with electric doors and offering excellent space for up to four vehicles, along with additional storage or workshop potential. This generous provision of parking and storage complements the home's design without detracting from its clean architectural lines.

Outside, a beautifully designed wrap around decked area provides multiple seating options and allows you to enjoy the sun throughout the day. With its south westerly aspect, this outdoor space is ideal for alfresco dining, entertaining or simply relaxing in a private and peaceful setting. The home also benefits from a lower garden, as well as a rear lawn.

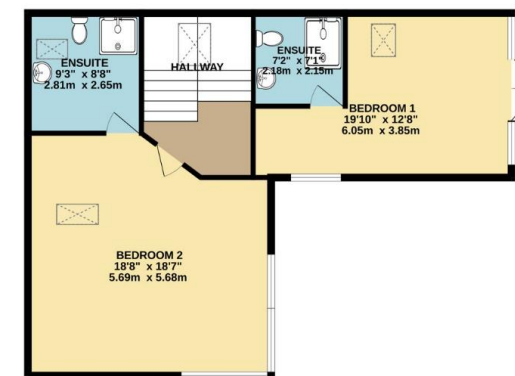
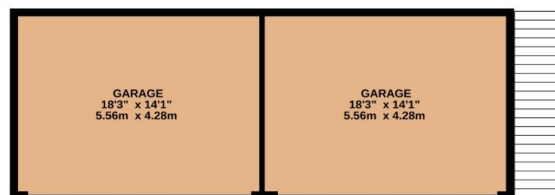
Positioned in the charming coastal village of Millbrook, the home lies on the edge of the Rame Peninsula, an area celebrated for its unspoilt coastline, scenic walks and traditional Cornish character, making this a truly exceptional place to live.

The property benefits from the option to acquire an additional parcel of land to the rear on a low annual rent, subject to further enquiry.



To view this property call Lang Town & Country Estate Agents on **01752 256000**.





TOTAL FLOOR AREA : 2133 sq.ft. (198.2 sq.m.) approx.

Whilst every attempt has been made to ensure the accuracy of the floorplan contained here, measurements of doors, windows, rooms and any other items are approximate and no responsibility is taken for any error, omission or mis-statement. This plan is for illustrative purposes only and should be used as such by any prospective purchaser. The services, systems and appliances shown have not been tested and no guarantee as to their operability or efficiency can be given.
Made with Metropix ©2026



Lang Town & Country
6 Mannamead Road
Plymouth
PL4 7AA
Tel: 01752 256000
Email: property@langtownandcountry.com
www.langtownandcountry.com

Lang Town & Country endeavour to ensure the accuracy of property details produced and displayed, we have not tested any apparatus, equipment, fixtures, fittings or services and so cannot verify that they are connected, in working order or fit for purpose. A buyer must check the availability of any property and make an appointment to view before embarking on any journey to see a property.

