



42 Cornwall Street, Devonport, Plymouth, Devon, PL1 4NY

£250,000



Within this award-winning development known as 'Gun Wharf', is this fabulous and imposing modern three-storey end terraced residence. The property enjoys quite fabulous views from the rear elevation, across the River Tamar towards Torpoint and across the dockyard. Devonport Park is within proximity and further afield, the renowned Royal William Yard with its host of Bars and Restaurants.

This spacious three-storey home offers well-balanced accommodation, modern living spaces, and an enclosed rear garden with decking—perfect for outdoor entertaining.

On the ground floor, you'll find a welcoming entrance hall leading to a bright and comfortable lounge, alongside a generous open-plan kitchen/diner with direct access to the garden. A useful WC completes this level.

The first floor offers two well-proportioned bedrooms and a family bathroom, providing an ideal layout for family living or guests.

On the second floor, there are a further two bedrooms, including another large double, as well as a convenient shower room.

Externally, the property benefits from an enclosed rear outdoor decking garden, offering a low-maintenance private space for relaxing or entertaining.

There is convenient on street parking which can be found within the Gunwharf estate and this home is being sold with no onward chain.

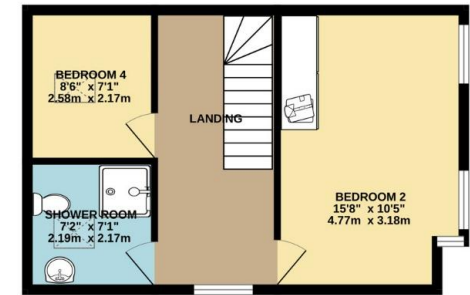
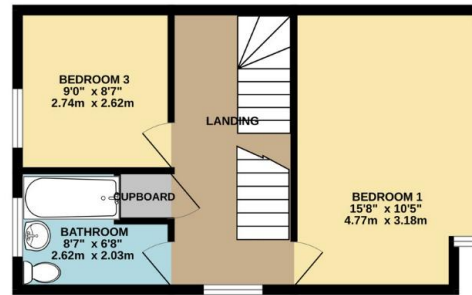
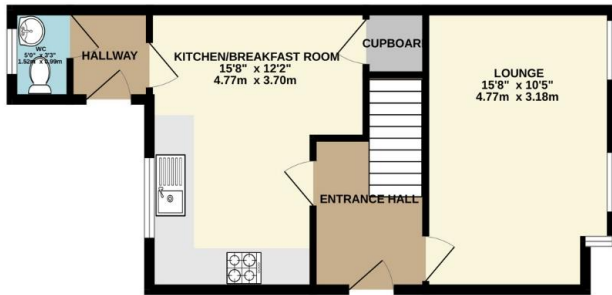
With accommodation arranged over three floors, this home provides flexibility for growing families, working from home, or creating guest spaces.

Agents Note: Images used are from prior to the current tenant moving in.



To view this property call Lang Town & Country Estate Agents on **01752 256000**.





TOTAL FLOOR AREA : 1221 sq.ft. (113.4 sq.m.) approx.

Whilst every attempt has been made to ensure the accuracy of the floorplan contained here, measurements of doors, windows, rooms and any other items are approximate and no responsibility is taken for any error, omission or mis-statement. This plan is for illustrative purposes only and should be used as such by any prospective purchaser. The services, systems and appliances shown have not been tested and no guarantee as to their operability or efficiency can be given.
Made with Metropix ©2025

