



LANG TOWN  
& COUNTRY

Flat B, 24 Queen Anne Terrace, North Hill, Plymouth, PL4 8EG





# Price £129,950



A beautifully presented ground floor studio apartment, perfectly situated in a highly convenient location just a quarter of a mile from Plymouth's vibrant City Centre, the historic Barbican, and the picturesque Plymouth Hoe. The property also sits quite literally on the doorstep of Plymouth University, making it an ideal choice for professionals, students, or investors alike.

The accommodation boasts a stunning and spacious living area featuring elegant décor and direct access to a private courtyard, providing a perfect space for relaxing or entertaining. The high-quality fitted kitchen is finished to an exceptional standard, offering contemporary units, integrated appliances, including 'Bosch' oven and hob, a dishwasher and ample workspace, perfect for modern living.

The apartment benefits from electric underfloor heating and contemporary Upvc windows and doors.

The property further benefits from an impressive and spacious contemporary shower room, complete with a large shower cubicle, wash hand basin, and a separate WC. There is also a useful and spacious utility area, providing additional practicality and convenience.

With its combination of style, comfort, and prime location, this superb studio apartment offers an outstanding opportunity to enjoy everything Plymouth has to offer, right on your doorstep.

**Agents note:** Some of the images used in this advert are computer generated and staged and are not to scale.

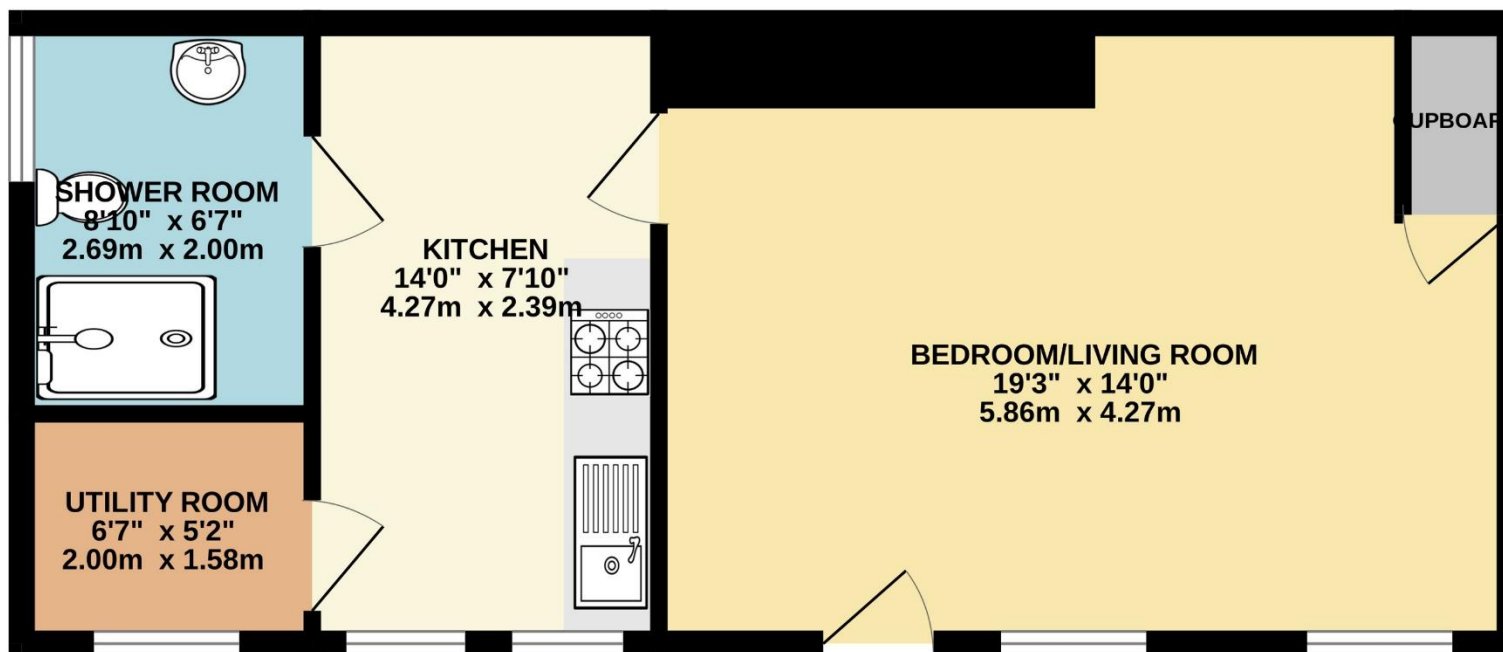
**LEASE INFORMATION** - We understand the apartment is held on a sharing freehold with each flat/apartment owns a share of the lease. Management charge TBC. The above information is provided in good faith although we would recommend that prospective purchasers consult their own solicitor for formal verification.



To view this property call Lang Town & Country Estate Agents on **01752 256000**

[www.langtownandcountry.com](http://www.langtownandcountry.com)





TOTAL FLOOR AREA : 471 sq.ft. (43.8 sq.m.) approx.

Whilst every attempt has been made to ensure the accuracy of the floorplan contained here, measurements of doors, windows, rooms and any other items are approximate and no responsibility is taken for any error, omission or mis-statement. This plan is for illustrative purposes only and should be used as such by any prospective purchaser. The services, systems and appliances shown have not been tested and no guarantee as to their operability or efficiency can be given.  
Made with Metropix ©2025



Lang Town & Country  
6 Mannamead Road  
Plymouth  
PL4 7AA

Tel: 01752 256000

Email: [property@langtownandcountry.com](mailto:property@langtownandcountry.com)

[www.langtownandcountry.com](http://www.langtownandcountry.com)

Lang Town & Country endeavour to ensure the accuracy of property details produced and displayed, we have not tested any apparatus, equipment, fixtures, fittings or services and so cannot verify that they are connected, in working order or fit for purpose. A buyer must check the availability of any property and make an appointment to view before embarking on any journey to see a property.

