



11 Burleigh Park Road, Peverell, Plymouth, Devon, PL3 4QQ



£425,000



Nestled within the highly sought-after and picturesque “show home” street of Peverell, this stunning, extended, Victorian terrace seamlessly blends timeless architectural elegance with stylish modern living. Perfectly suited to discerning professionals, growing families, or those seeking a versatile home in a prestigious location, this property offers space, character, and refined comfort across three beautifully appointed floors.

Step beyond the charming tiled pathway and double front doors into a welcoming vestibule and hallway, where high ceilings and original features set an elegant tone. To the front of the property, the bay-fronted living room exudes classic charm, with ornate ceiling coving and a handsome fireplace creating a sophisticated space for relaxation or entertaining guests.

There is a separate dining room which leads seamlessly into the extended, entertaining space, equipped with a ‘Quooker’ tap in the central island, with skylights, bi-fold doors with remote blinds opening onto the rear west facing courtyard garden.

There is a fully fitted kitchen with ample storage and a ‘Range master’ oven and ‘Neff’ dishwasher. There is also a utility room and separate shower room on this level. Upstairs, the first floor features three well-proportioned bedrooms, all designed to offer tranquillity and rest. A beautifully finished family bathroom serves this level, featuring quality fixtures and a sleek, modern design.

Externally, the property benefits from a low-maintenance front garden and a private rear courtyard – perfect for al fresco dining, morning coffees, or evening relaxation. Gated access to the rear service lane adds everyday convenience.

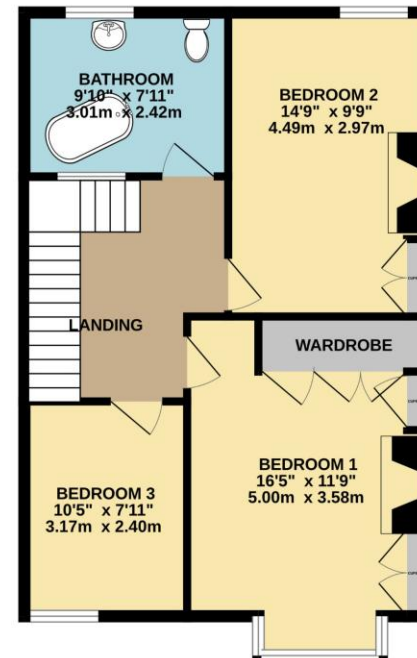
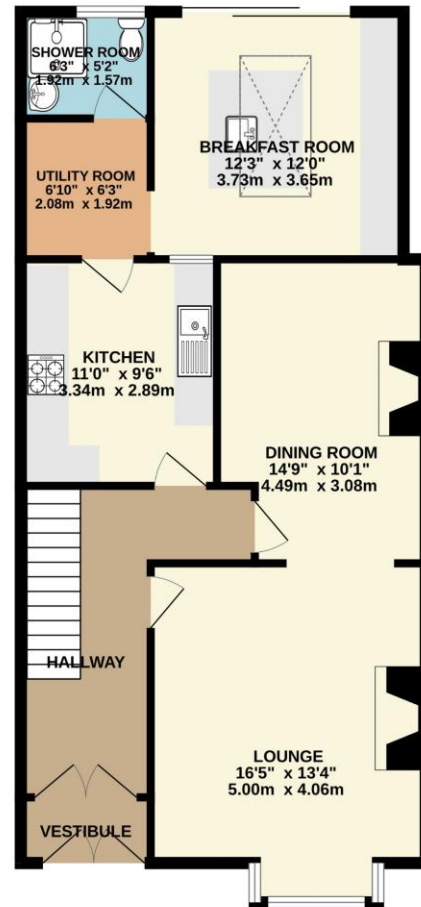
With its rich blend of period details and modern enhancements, and an enviable position on one of Peverell’s most desirable roads, this exceptional residence offers a rare opportunity to enjoy elegant and effortless living in Plymouth’s most admired neighbourhood.



To view this property call Lang Town & Country Estate Agents on 01752 256000.







TOTAL FLOOR AREA: 1390 sq.ft. (129.2 sq.m.) approx.  
 Whilst every attempt has been made to ensure the accuracy of the floorplan contained here, measurements of doors, windows, rooms and any other items are approximate and no responsibility is taken for any error, omission or mis-statement. This plan is for illustrative purposes only and should be used as such by any prospective purchaser. The services, systems and appliances shown have not been tested and no guarantee as to their operability or efficiency can be given.  
 Made with Metropix ©2025



Lang Town & Country  
 6 Mannamead Road  
 Plymouth  
 PL4 7AA

Tel: 01752 256000

Email: [property@langtownandcountry.com](mailto:property@langtownandcountry.com)

[www.langtownandcountry.com](http://www.langtownandcountry.com)

Lang Town & Country endeavour to ensure the accuracy of property details produced and displayed, we have not tested any apparatus, equipment, fixtures, fittings or services and so cannot verify that they are connected, in working order or fit for purpose. A buyer must check the availability of any property and make an appointment to view before embarking on any journey to see a property.

