



24 St Boniface Close, Beacon Park, Plymouth, Devon, PL2 3QN

Guide Price £210,000

Welcome to this modern mid-terraced home, perfectly positioned in a highly sought-after residential estate. Offering a superb blend of comfort, convenience, and contemporary living, this well-presented property is ideal for families, professionals, or investors alike.

Situated just 2 miles from Plymouth's vibrant city centre, the historic Barbican, and the scenic Plymouth Hoe, you'll enjoy easy access to the best of the city's shopping, dining, and waterfront attractions. The home is also within close proximity to well-regarded schools, making it a great choice for those with children.

Nature lovers and active families will appreciate being just a short stroll from Central Park, ideal for walks, picnics, and a variety of leisure activities. Local shops and everyday amenities are also within easy reach, enhancing the practical appeal of this excellent location.

Inside, the accommodation comprises on the ground floor A welcoming living room and a modern fitted kitchen and on the first floor, Two double bedrooms and a stylish, contemporary bathroom.

One of the standout features of this property is the sunny, west-facing rear garden, complete with a patio area—perfect for outdoor dining—and a garden shed for additional storage.

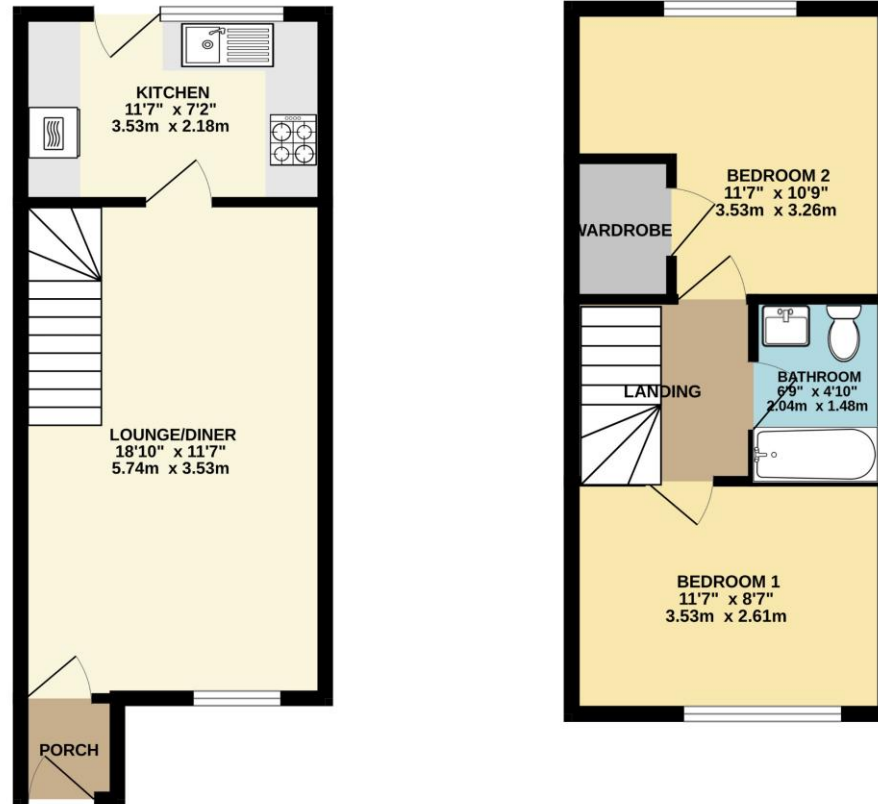
Additional benefits include an allocated parking space, with visitor parking available within the estate.

This property offers a fantastic lifestyle opportunity in a prime location—early viewing is highly recommended.



To view this property call Lang Town & Country Estate Agents on **01752 256000**.





TOTAL FLOOR AREA : 615 sq.ft. (57.2 sq.m.) approx.

Whilst every attempt has been made to ensure the accuracy of the floorplan contained here, measurements of doors, windows, rooms and any other items are approximate and no responsibility is taken for any error, omission or mis-statement. This plan is for illustrative purposes only and should be used as such by any prospective purchaser. The services, systems and appliances shown have not been tested and no guarantee as to their operability or efficiency can be given.

Made with Metropix ©2025



Lang Town & Country
6 Mannamead road
Mannamead
Plymouth
PL4 7AA

Tel: 01752 256000

Email: property@langtownandcountry.com

www.langtownandcountry.com

Lang Town & Country endeavour to ensure the accuracy of property details produced and displayed, we have not tested any apparatus, equipment, fixtures, fittings or services and so cannot verify that they are connected, in working order or fit for purpose. A buyer must check the availability of any property and make an appointment to view before embarking on any journey to see a property.

