



75 Somerset Place, Stoke, Plymouth, Devon, PL3 4BQ

Price £400,000



Lang Town and Country are delighted to bring this perfect family home to the market. Nestled in the desirable Stoke Conservation area, this simply stunning semi-detached house from the 1930s has been fully refurbished to an exceptional standard. A true credit to its current owners, the property boasts immaculate and tasteful presentation throughout, making it an ideal family home.

Upon entering, you are welcomed into a spacious sitting room that exudes warmth and comfort, perfect for relaxing evenings. The adjoining dining room provides an elegant space for family meals and entertaining guests. The fitted kitchen/breakfast room is a delightful hub for culinary creativity, offering ample space for casual dining. Additionally, a convenient ground floor cloakroom enhances the practicality of this lovely home.

The first floor features three generously sized double bedrooms, each designed to provide a peaceful retreat. The sumptuous family bathroom is a luxurious space, ideal for unwinding after a long day.

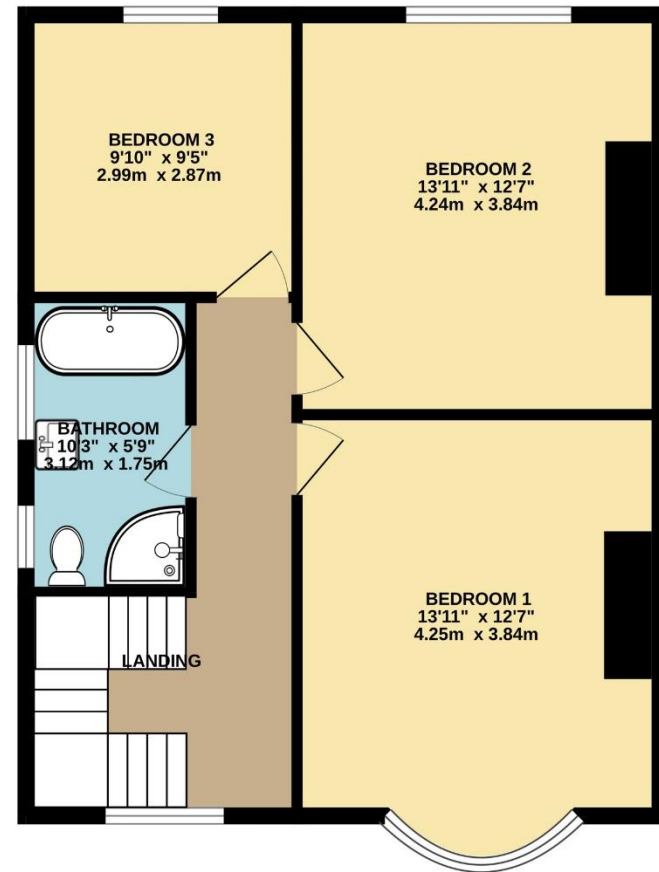
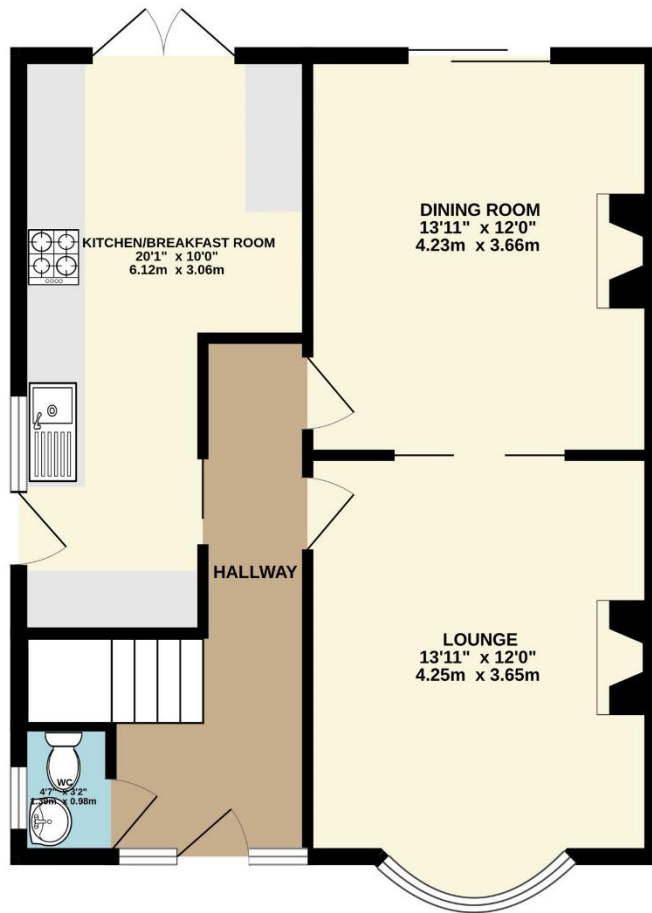
Outside, the property is equally impressive. The front garden adds to the home's curb appeal, while the driveway provides parking. The enclosed south-facing rear garden is a true gem, offering a safe and inviting space for children and pets to play, as well as a perfect spot for summer gatherings. You will also find a newly built garage, which doesn't just serve for storage, it's the perfect place for a home gym/home office/games room/studio!

This remarkable family house combines modern living with classic charm, making it a must-see for anyone seeking a home in the heart of Stoke. With its high specification finishes and thoughtful design, this property is ready to welcome its new owners. Don't miss the opportunity to make this exquisite house your new home.



To view this property call Lang Town & Country Estate Agents on **01752 256000**.





TOTAL FLOOR AREA : 1241 sq.ft. (115.3 sq.m.) approx.

Whilst every attempt has been made to ensure the accuracy of the floorplan contained here, measurements of doors, windows, rooms and any other items are approximate and no responsibility is taken for any error, omission or mis-statement. This plan is for illustrative purposes only and should be used as such by any prospective purchaser. The services, systems and appliances shown have not been tested and no guarantee as to their operability or efficiency can be given.
Made with Metropix ©2025



Lang Town & Country
6 Mannamead Road
Plymouth
PL4 7AA
Tel: 01752 256000
Email: property@langtownandcountry.com
www.langtownandcountry.com

Lang Town & Country endeavour to ensure the accuracy of property details produced and displayed, we have not tested any apparatus, equipment, fixtures, fittings or services and so cannot verify that they are connected, in working order or fit for purpose. A buyer must check the availability of any property and make an appointment to view before embarking on any journey to see a property.

