



42 Kensington Road, Greenbank, Plymouth, PL4 7LU



# Offer Over £225,000

Lang Town and Country are delighted to offer this charming home which is full of character.

Situated just a stone's throw from the bustling Mutley Plain shopping area and within easy reach of Plymouth's vibrant city centre, the historic Barbican, and the scenic Plymouth Hoe, this beautifully presented mid-terraced house offers the perfect blend of character, comfort, and convenience. Lovingly maintained and tastefully modernised over the years, the property retains much of its original charm and period features, creating a warm and welcoming atmosphere throughout.

The ground floor comprises a bright and spacious lounge, a separate dining room perfect for entertaining, a sleek contemporary kitchen, and a stylish modern shower room. Upstairs, you'll find two generously sized double bedrooms, while the loft space provides a versatile area ideal for a home office, or additional living space.

Outside, the enclosed rear courtyard offers a low-maintenance haven with a raised patio area ideal for relaxing or enjoying al fresco dining.

This is a fantastic opportunity to own a characterful and well-appointed home in one of Plymouth's most convenient and desirable locations.

An early viewing is essential to appreciate this beautiful property situated in a convenient location.

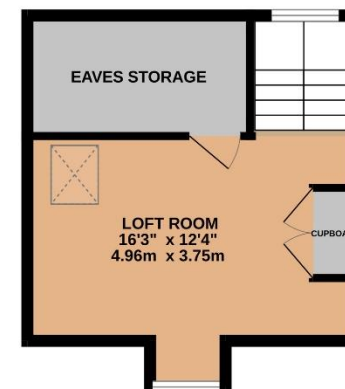
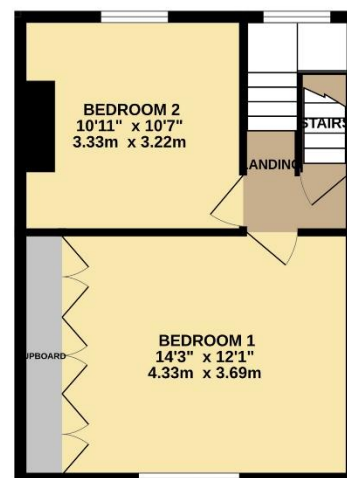
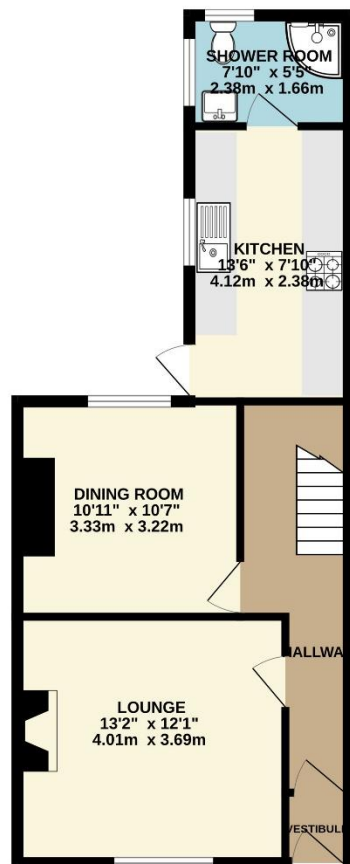
To view this property call Lang Town & Country Estate Agents on **01752 256000**.

[www.langtownandcountry.com](http://www.langtownandcountry.com)









TOTAL FLOOR AREA : 1153 sq.ft. (107.1 sq.m.) approx.

Whilst every attempt has been made to ensure the accuracy of the floorplan contained here, measurements of doors, windows, rooms and any other items are approximate and no responsibility is taken for any error, omission or mis-statement. This plan is for illustrative purposes only and should be used as such by any prospective purchaser. The services, systems and appliances shown have not been tested and no guarantee as to their operability or efficiency can be given.  
Made with Metropix ©2025



Lang Town & Country  
6 Mannamead Road  
Plymouth  
PL4 7AA

Tel: 01752 256000

Email: [property@langtownandcountry.com](mailto:property@langtownandcountry.com)

[www.langtownandcountry.com](http://www.langtownandcountry.com)

Lang Town & Country endeavour to ensure the accuracy of property details produced and displayed, we have not tested any apparatus, equipment, fixtures, fittings or services and so cannot verify that they are connected, in working order or fit for purpose. A buyer must check the availability of any property and make an appointment to view before embarking on any journey to see a property.

