



115 Beaumaris Road, Hartley Vale, Plymouth, Devon, PL3 5SD



# Offers Over £340,000

Nestled in the heart of Hartley Vale, this beautifully presented three-bedroom detached home offers stylish and versatile living – ideal for a growing family.

From the moment you step inside, the welcoming entrance hall sets the tone for the rest of the property. A convenient downstairs WC is located just off the hallway, along with internal access to the garage – perfect for secure parking or additional storage.

The heart of the home is the spacious and contemporary kitchen/breakfast room, designed with both function and family life in mind. This bright and airy space flows seamlessly into a separate lounge, creating a comfortable area to relax and unwind. Beyond the lounge, a conservatory offers further living space and opens directly onto the rear garden, making it a great spot for entertaining or enjoying the outdoors year-round.

Upstairs, you'll find three well-proportioned bedrooms, a modern family bathroom, useful storage cupboards, and access to the loft.

Outside, the front garden is designed for low maintenance and features a private driveway. The rear garden is fully enclosed, predominantly laid to lawn, and includes a patio area – perfect for summer barbecues or children's play.

Renovated to a high standard and maintained with care, this property is ready to move into and enjoy.

Early viewing is highly recommended to fully appreciate all that this wonderful home has to offer.



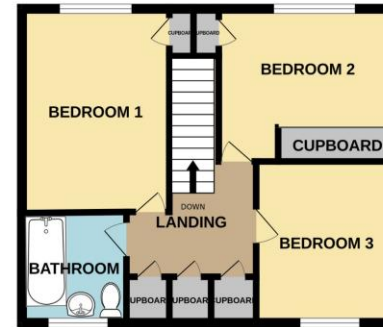
To view this property call Lang Town & Country Estate Agents on **01752 256000**.





GROUND FLOOR

1ST FLOOR



Whilst every attempt has been made to ensure the accuracy of the floorplan contained here, measurements of doors, windows, rooms and any other items are approximate and no responsibility is taken for any error, omission or mis-statement. This plan is for illustrative purposes only and should be used as such by any prospective purchaser. The services, systems and appliances shown have not been tested and no guarantee as to their operability or efficiency can be given.  
Made with Metropix C2025

Lang Town & Country  
6 Mannamead Road  
Plymouth  
PL4 7AA  
Tel: 01752 456000  
Email: [property@langtownandcountry.com](mailto:property@langtownandcountry.com)  
[www.langtownandcountry.com](http://www.langtownandcountry.com)

Lang Town & Country endeavour to ensure the accuracy of property details produced and displayed, we have not tested any apparatus, equipment, fixtures, fittings or services and so cannot verify that they are connected, in working order or fit for purpose. A buyer must check the availability of any property and make an appointment to view before embarking on any journey to see a property.

