



48 Falcon Road, Mount Wise, Plymouth, Devon, PL1 4GR

Price £270,000



Lang Town and Country are delighted to present to the market this well-presented town house. The property is situated in the heart of the sought-after Mount Wise development just a short walk from Plymouth Sound with nearby attractions including the lovely Mount Wise Park, spectacular views from the Scott Memorial and walks alongside the River Tamar to Mutton Cove. A little further around from Mount Wise is Firestone Bay, Devils Point and the Royal William Yard. The Torpoint passenger/car ferry is also within easy walking distance providing access to the beautiful Rame Peninsula and all parts of Cornwall. Inside the Mount wise development there is a convenient Tesco Express and residents only use of the lovely Southern Gardens.

This beautifully updated two-bedroom property offers contemporary living in a prime Plymouth location. Immaculate throughout, the home has been tastefully modernised to an exceptional standard, offering a perfect blend of style, comfort, and functionality. The ground floor welcomes you with a bright and spacious open-plan kitchen/living area, stretching the full length of the property. This stylish space is perfect for both entertaining and everyday living, with a modern fitted kitchen and seamless flow to the rear garden through double doors. A handy WC/utility room is also conveniently positioned off the entrance hall.

Upstairs, the property features two generously sized double bedrooms. The principal bedroom benefits from a chic en-suite, while the second bedroom is served by a contemporary shower room. A useful landing cupboard provides additional storage.

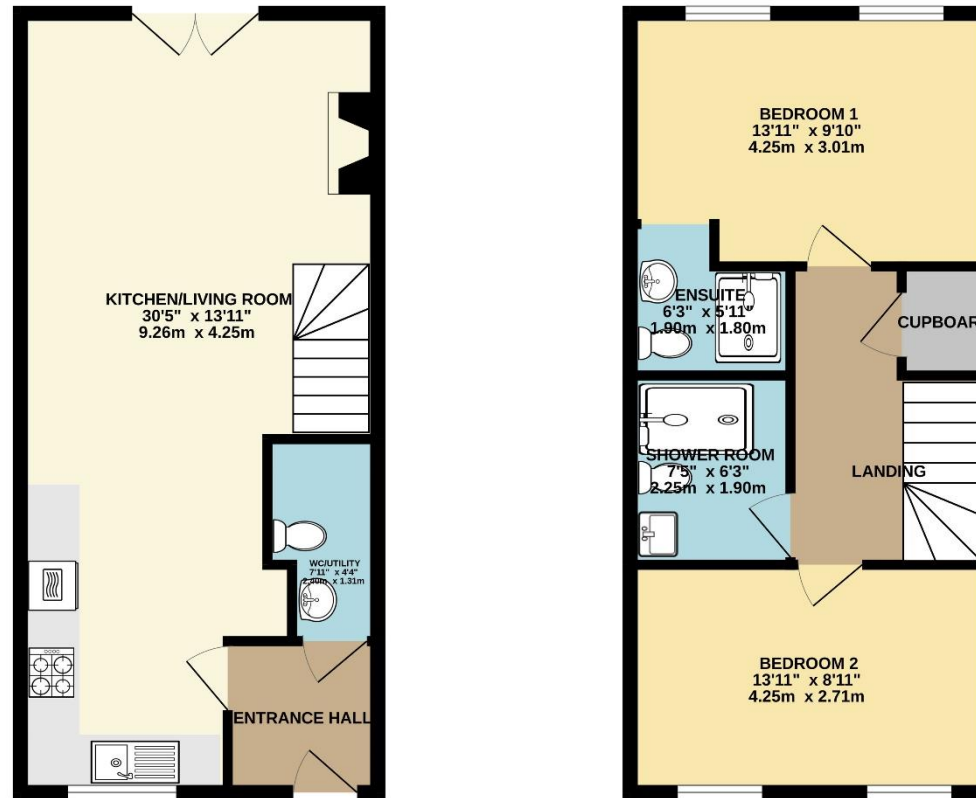
Don't miss the opportunity to make this home your own.

Agent Notes: The development is run by a management company and there is a yearly charge for the maintenance and upkeep of the estate. The details of which should be confirmed by your solicitor.



To view this property call Lang Town & Country Estate Agents on **01752 256000**.





TOTAL FLOOR AREA : 847 sq.ft. (78.7 sq.m.) approx.

Whilst every attempt has been made to ensure the accuracy of the floorplan contained here, measurements of doors, windows, rooms and any other items are approximate and no responsibility is taken for any error, omission or mis-statement. This plan is for illustrative purposes only and should be used as such by any prospective purchaser. The services, systems and appliances shown have not been tested and no guarantee as to their operability or efficiency can be given.
Made with Metropix ©2025



Lang Town & Country
6 Mannamead road
Mannamead
Plymouth
PL4 7AA

Tel: 01752 256000

Email: property@langtownandcountry.com

www.langtownandcountry.com

Lang Town & Country endeavour to ensure the accuracy of property details produced and displayed, we have not tested any apparatus, equipment, fixtures, fittings or services and so cannot verify that they are connected, in working order or fit for purpose. A buyer must check the availability of any property and make an appointment to view before embarking on any journey to see a property.

