



15 The Grove, Stoke, Plymouth, Devon, PL3 4AL

£525,000



Situated in a highly desirable residential cul-de-sac in the popular suburb of Stoke, 'The Grove' offers a delightful setting surrounded by a blend of detached and semi-detached homes. Stoke is well regarded for its central location, village-like charm, and excellent local amenities, including shops, cafés, and restaurants—all just two miles from the city centre.

This attractive semi-detached residence offers versatile living space across two floors. The ground floor features an inviting entrance hall with characterful stripped wooden flooring, which continues into the downstairs WC/cloakroom. A study or optional fifth bedroom adds flexibility, while the separate lounge boasts a cosy coal fire and French doors opening directly onto the beautifully maintained rear garden. The property also benefits from a dedicated dining room and a well-appointed kitchen/breakfast room, complete with an integrated oven, dishwasher, and a generous range of wall and base units. Adjoining this space is a large utility room, which provides access to the integral garage.

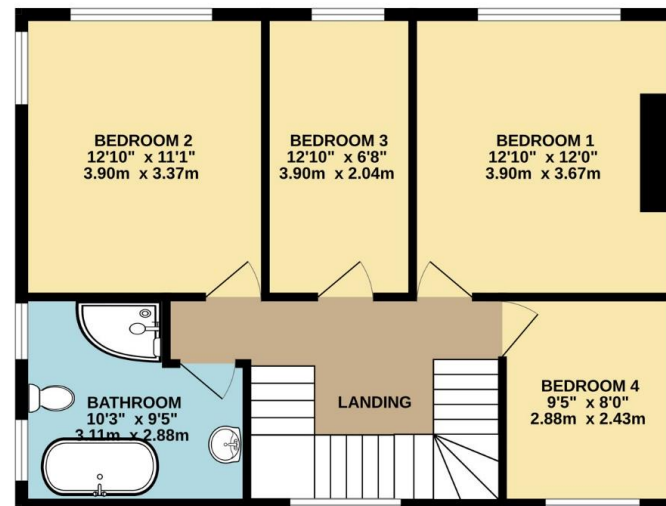
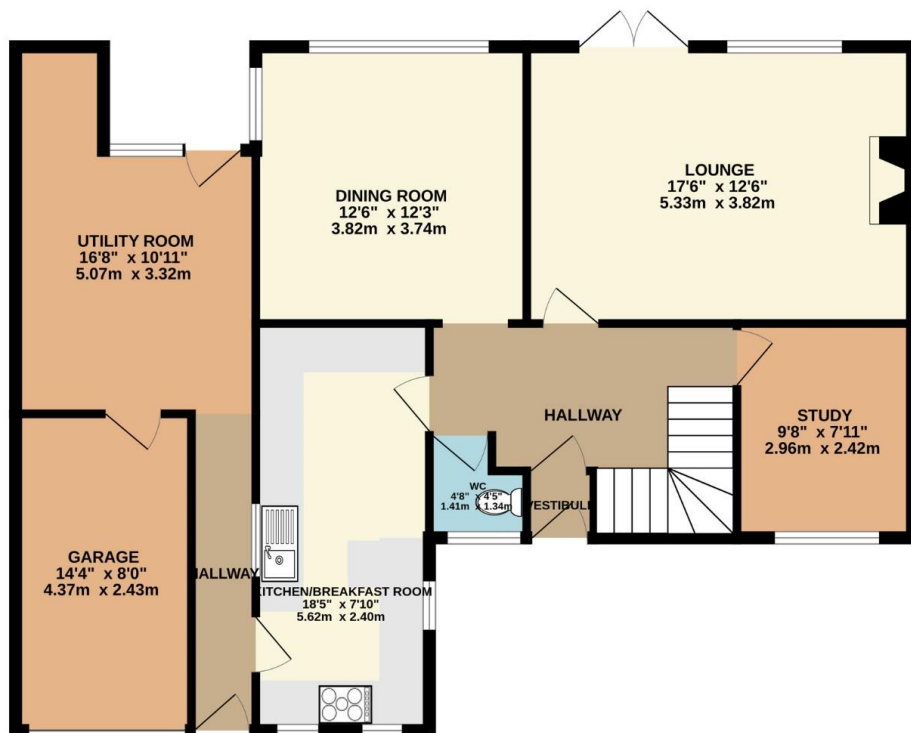
Upstairs, you will find four well-proportioned bedrooms and a family bathroom. Most windows have been updated to uPVC, and the property is equipped with gas central heating for year-round comfort.

Externally, the home enjoys a driveway and a neat front garden. To the rear, a stunning south-facing garden awaits—mainly laid to lawn and enhanced by two inviting seating areas and vibrant, well-established flower borders, perfect for relaxing or entertaining.



To view this property call Lang Town & Country Estate Agents on 01752 256000.





TOTAL FLOOR AREA : 1697 sq.ft. (157.7 sq.m.) approx.

Whilst every attempt has been made to ensure the accuracy of the floorplan contained here, measurements of doors, windows, rooms and any other items are approximate and no responsibility is taken for any error, omission or mis-statement. This plan is for illustrative purposes only and should be used as such by any prospective purchaser. The services, systems and appliances shown have not been tested and no guarantee as to their operability or efficiency can be given.
Made with Metropix ©2025



Lang Town & Country
6 Mannamead Road
Plymouth
PL4 7AA
Tel: 01752 456000
Email: property@langtownandcountry.com
www.langtownandcountry.com

Lang Town & Country endeavour to ensure the accuracy of property details produced and displayed, we have not tested any apparatus, equipment, fixtures, fittings or services and so cannot verify that they are connected, in working order or fit for purpose. A buyer must check the availability of any property and make an appointment to view before embarking on any journey to see a property.

