



First Floor Flat, 32 Westbourne Road, Peverell, Plymouth, Devon, PL3 4LJ

Price £120,000



Lang Town and Country are delighted to offer to the market this delightful first-floor one-bedroom flat, set within a beautifully converted period house. Accessed via a communal entrance with stairs leading up to the property, this flat seamlessly blends classic charm with modern comfort.

The accommodation boasts a spacious lounge, bathed in natural light from an elegant bay window, highlighting period features and a characterful fireplace — perfect for relaxing or entertaining.

The generously sized double bedroom comes complete with built-in wardrobes, offering ample storage while maintaining the room's airy and welcoming feel.

A well-appointed fitted bathroom provides modern convenience complete with a shower over the bath, wash hand basin with built in storage, heated towel rail and a WC, while the bright kitchen features plenty of space for a breakfast area — ideal for morning coffee or casual dining.

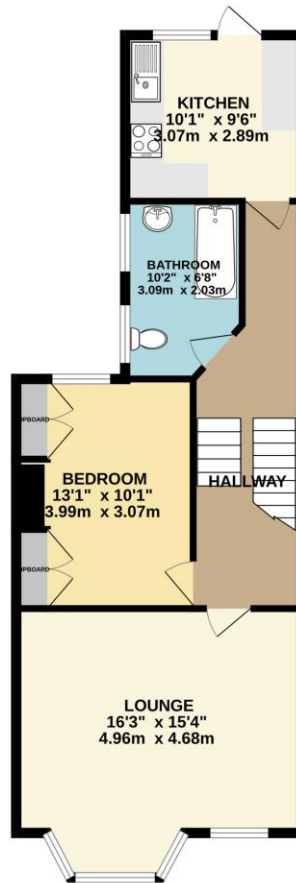
This unique property offers a wonderful opportunity to enjoy the character and charm of period living with the practicality of a thoughtfully designed modern flat. Being sold with no onward chain, don't miss the opportunity to make this property your home.

We understand the apartment is held on a sharing freehold with each flat/apartment owns a share of the lease subject to a service charge of approximately per year from *DATE ON PQ* but this is subject to change and an annual ground rent of approximately . The above information is provided in good faith although we would recommend that prospective purchasers consult their own solicitor for formal verification.



To view this property call Lang Town & Country Estate Agents on **01752 256000**





TOTAL FLOOR AREA : 635 sq.ft. (59.0 sq.m.) approx.

Whilst every attempt has been made to ensure the accuracy of the floorplan contained here, measurements of doors, windows, rooms and any other items are approximate and no responsibility is taken for any error, omission or mis-statement. This plan is for illustrative purposes only and should be used as such by any prospective purchaser. The services, systems and appliances shown have not been tested and no guarantee as to their operability or efficiency can be given.
Made with Metropix ©2025



Lang Town & Country
6 Mannamead Road
Plymouth
PL4 7AA

Tel: 01752 256000

Email: property@langtownandcountry.com

www.langtownandcountry.com

Lang Town & Country endeavour to ensure the accuracy of property details produced and displayed, we have not tested any apparatus, equipment, fixtures, fittings or services and so cannot verify that they are connected, in working order or fit for purpose. A buyer must check the availability of any property and make an appointment to view before embarking on any journey to see a property.

