



130 Pemros Road, St Budeaux, Plymouth, PL5 1NH



# Price £240,000

Lang Town and Country are pleased to present this attractive double-fronted, semi-detached bungalow to the market with no onward chain. Situated on one of the area's most sought-after roads, the property enjoys a prime location close to the local amenities of St Budeaux and within easy reach of Saltash Passage and the scenic River Tamar walks.

Light and bright throughout, the bungalow would benefit from a light programme of refreshment and boasts breathtaking views from the front, taking in the iconic Tamar Bridge and stretching across to East Cornwall. The accommodation comprises a welcoming porch and entrance hall, a spacious lounge with a round bay window and gas fireplace that flows into a dining area with a built-in glass cabinet, and a rear kitchen fitted with a range of units, a gas cooker, and space for white goods. Off the kitchen, there is a convenient shower room with a separate WC and shelving for storage. The property features two generous double bedrooms, both with fitted wardrobes with the Master bedroom to the front enjoying a round bay window and pleasant views towards Tamar Bridge.

To the rear, the low-maintenance garden is level and designed with a combination of patio and lawn areas, well-stocked flower beds, small trees, and shrubbery, along with side access to the front, a shed, and a private driveway for off road parking.

This charming bungalow offers an excellent opportunity for buyers looking for a comfortable home in a desirable location, available with no onward chain.

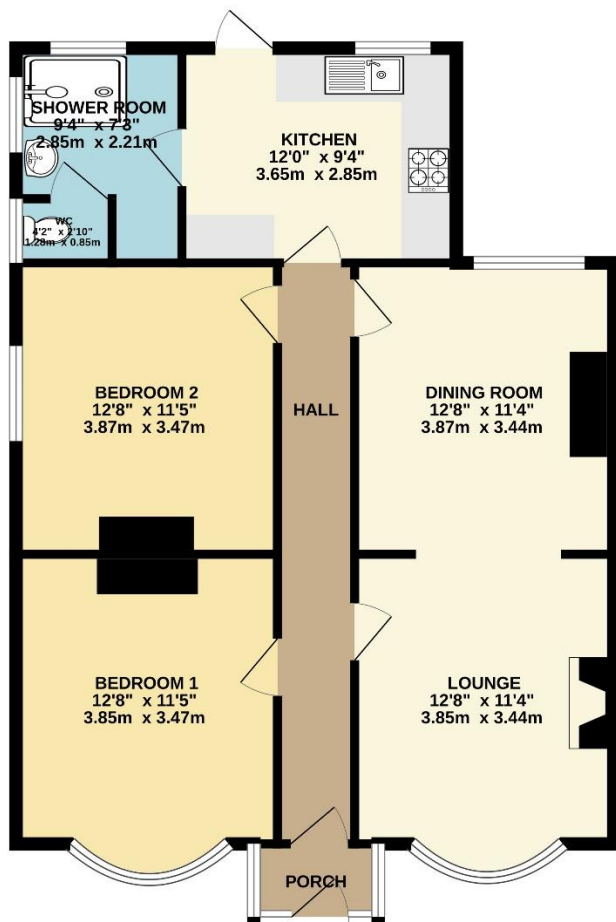


To view this property call Lang Town & Country Estate Agents on **01752 256000**

[www.langtownandcountry.com](http://www.langtownandcountry.com)







TOTAL FLOOR AREA : 871 sq.ft. (80.9 sq.m.) approx.  
 Whilst every attempt has been made to ensure the accuracy of the floorplan contained here, measurements of doors, windows, rooms and any other items are approximate and no responsibility is taken for any error, omission or mis-statement. This plan is for illustrative purposes only and should be used as such by any prospective purchaser. The services, systems and appliances shown have not been tested and no guarantee as to their operability or efficiency can be given.  
 Made with Metropix 5/20/25



Lang Town & Country  
 6 Mannamead Road  
 Plymouth  
 PL4 7AA  
 Tel: 01752 256000  
 Email: [property@langtownandcountry.com](mailto:property@langtownandcountry.com)  
[www.langtownandcountry.com](http://www.langtownandcountry.com)

Lang Town & Country endeavour to ensure the accuracy of property details produced and displayed, we have not tested any apparatus, equipment, fixtures, fittings or services and so cannot verify that they are connected, in working order or fit for purpose. A buyer must check the availability of any property and make an appointment to view before embarking on any journey to see a property.

