



LANG TOWN
& COUNTRY

456 Wolseley Road, St Budeaux, Plymouth, PL5 1BJ



Offers Over £170,000

Located in the highly sought-after area of Weston Mill, this charming character home presents an excellent opportunity for first-time buyers and investors alike. Offering a perfect balance of style and affordability, the property features two well-proportioned bedrooms, making it ideal for young professionals, couples, or those looking to step onto the property ladder.

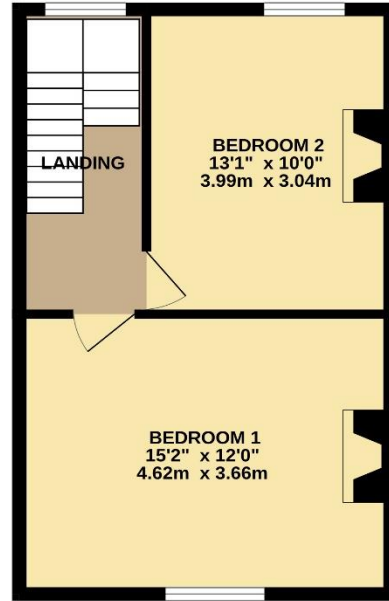
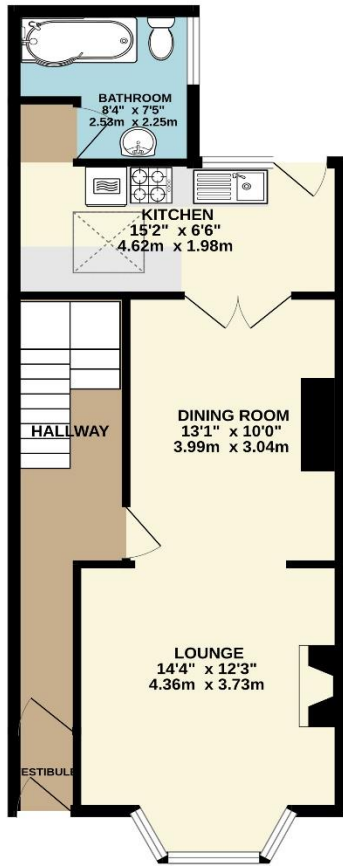
Inside, a bright and spacious living room provides a welcoming space to relax and entertain. The kitchen offers great potential to be transformed into a stylish and functional space with ample storage. Both bedrooms are generously sized, comfortably accommodating a double bed and additional furniture. The new bathroom includes a stylish suite with a bath and overhead shower, perfect for unwinding after a busy day.

Externally, the private garden offers a great space for outdoor dining and summer gatherings, while a designated parking area at the rear adds convenience. Situated close to the dockyard and key amenities, this property is move-in ready with room to add value, making it a fantastic option for those looking for a smart investment or a comfortable first home.



To view this property call Lang Town & Country Estate Agents on **01752 256000**





TOTAL FLOOR AREA: 934 sq.ft. (86.8 sq.m.) approx.
 Whilst every attempt has been made to ensure the accuracy of the floorplan contained here, measurements of doors, windows, rooms and any other items are approximate and no responsibility is taken for any error, omission or mis-statement. This plan is for illustrative purposes only and should be used as such by any prospective purchaser. The services, systems and appliances shown have not been tested and no guarantee as to their operability or efficiency can be given.
 Made with Metropix ©2025



Lang Town & Country
 6 Mannamead Road
 Plymouth
 PL4 7AA
 Tel: 01752 256000
 Email: property@langtownandcountry.com
www.langtownandcountry.com

Lang Town & Country endeavour to ensure the accuracy of property details produced and displayed, we have not tested any apparatus, equipment, fixtures, fittings or services and so cannot verify that they are connected, in working order or fit for purpose. A buyer must check the availability of any property and make an appointment to view before embarking on any journey to see a property.

