



137 Stuart Road, Stoke, Plymouth, Devon, PL1 5LG



# Price £395,000



Lang Town and Country are delighted to offer to the market this elegant four-bedroom terraced house which is rich in period charm, boasting intricate ceiling roses, ornate cornicing, original doors, a beautifully crafted balustrade staircase & stunning fireplaces.

The accommodation begins with a welcoming vestibule leading into a grand entrance hall. The sitting room, featuring a charming bay window, is a bright and inviting space, seamlessly connected to the dining room through original sliding doors. To the rear, the kitchen/breakfast room has been tastefully upgraded by the current owners approx. 8 years ago. It now offers a stylish and functional space, complete with a cozy sofa seating area or alternative breakfast area, ample worktop space, plenty of cupboards, pot and pan drawers, integrated full fridge, Neff hide and slide oven and microwave, 5 ring gas hob, Bosch dishwasher and washer/dryer. This room enjoys a sunny dual aspect, with side windows and rear French patio doors opening onto the beautifully landscaped garden.

The garden has been designed for ease of maintenance, with high-quality patio slabs and well-stocked flower beds that bring vibrant colour in spring and summer all enclosed by a charming wall which part of it has a wonderful wisteria growing and a pedestrian gate providing easy access to the service lane behind. Additionally, the ground floor benefits from a downstairs WC and two useful under-stairs cupboards.

On the first floor, the impressive master bedroom is flooded with natural light with a bay window and two built in original cupboards, while a second spacious double bedroom provides a perfect retreat for guests, complete with a wardrobe space and a cupboard with shelving. This floor also hosts a luxurious family bathroom, featuring high-end tiled flooring with under floor heating, a separate roll top bath with mixer taps and a handheld shower head, a shower cubicle, a heated towel rail, and a WC. A second shower room provides additional convenience for guests and has been laid with stylish vinyl flooring.

The top floor offers two further generous double bedrooms. The front bedroom enjoys access to a charming balcony, while the rear bedroom boasts breathtaking views across the city centre, East Cornwall, and Mount Edgumbe.

Offered to the market chain-free, this exceptional home effortlessly combines period elegance with modern comfort, making it a truly unique opportunity.



To view this property call Lang Town & Country Estate Agents on **01752 256000**.

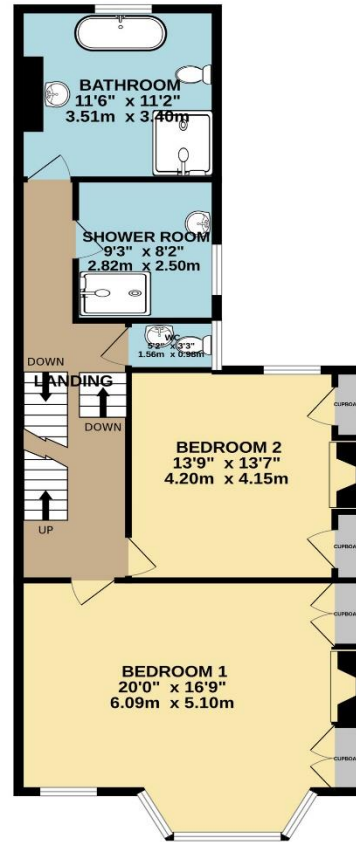




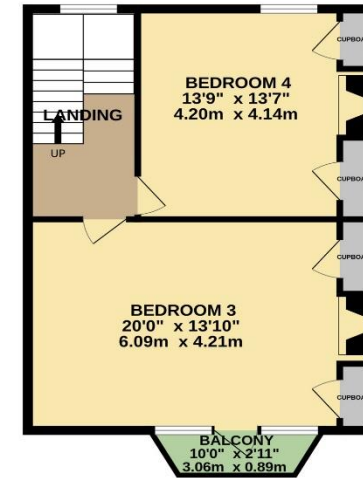
GROUND FLOOR  
836 sq.ft. (77.7 sq.m.) approx.



1ST FLOOR  
828 sq.ft. (76.9 sq.m.) approx.



2ND FLOOR  
538 sq.ft. (50.0 sq.m.) approx.



TOTAL FLOOR AREA : 2201 sq.ft. (204.5 sq.m.) approx.

Whilst every attempt has been made to ensure the accuracy of the floorplan contained here, measurements of doors, windows, rooms and any other items are approximate and no responsibility is taken for any error, omission or mis-statement. This plan is for illustrative purposes only and should be used as such by any prospective purchaser. The services, systems and appliances shown have not been tested and no guarantee as to their operability or efficiency can be given.  
Made with Metropix ©2025



Lang Town & Country  
6 Mannamead Road  
Plymouth  
PL4 7AA  
Tel: 01752 456000  
Email: [property@langtownandcountry.com](mailto:property@langtownandcountry.com)  
[www.langtownandcountry.com](http://www.langtownandcountry.com)

Lang Town & Country endeavour to ensure the accuracy of property details produced and displayed, we have not tested any apparatus, equipment, fixtures, fittings or services and so cannot verify that they are connected, in working order or fit for purpose. A buyer must check the availability of any property and make an appointment to view before embarking on any journey to see a property.

