



13 Sturdee Road, Milehouse, Plymouth, Devon, PL2 3AU



Guide Price £190,000



Positioned in a popular residential location, this well-proportioned three-bedroom terraced home offers a fantastic opportunity for modernisation, allowing you to put your own stamp on it whilst it has just benefited from a brand-new roof in the last 12 months. The property has been under the same ownership for approximately 65 years.

Steps lead up to the front door, opening into a spacious and inviting interior. The ground floor features a generous sitting room with lots of natural light, leading to the adjoining dining room, creating a versatile and sociable living space. To the rear, the kitchen complete with a range of wall and base units and ample space for white goods provides direct access to the enclosed garden, offering a private outdoor retreat which is easy to maintain and has been laid with artificial grass and a patio area, perfect for a garden shed. There is also a garden store and outside WC.

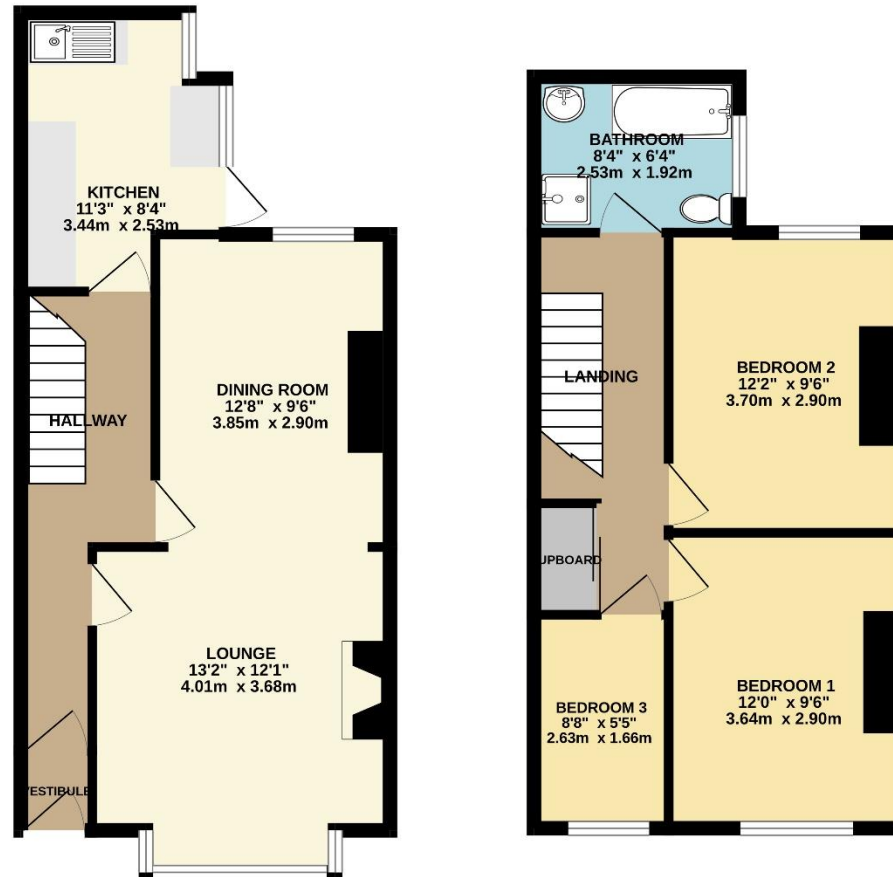
Upstairs, there are three well-sized bedrooms and a family bathroom, providing comfortable accommodation for a growing family or those seeking additional space. The landing space offers a large cupboard with a sliding door, perfect as a linen cupboard.

Offered with no onward chain, this property is brimming with potential and presents an exciting prospect for buyers looking to create their ideal home. Early viewing is recommended.



To view this property call Lang Town & Country Estate Agents on **01752 256000**





TOTAL FLOOR AREA : 857 sq.ft. (79.6 sq.m.) approx.

Whilst every attempt has been made to ensure the accuracy of the floorplan contained here, measurements of doors, windows, rooms and any other items are approximate and no responsibility is taken for any error, omission or mis-statement. This plan is for illustrative purposes only and should be used as such by any prospective purchaser. The services, systems and appliances shown have not been tested and no guarantee as to their operability or efficiency can be given.
Made with Metropix ©2025



Lang Town & Country
6 Mannamead Road
Plymouth
PL4 7AA

Tel: 01752 256000

Email: property@langtownandcountry.com

www.langtownandcountry.com

Lang Town & Country endeavour to ensure the accuracy of property details produced and displayed, we have not tested any apparatus, equipment, fixtures, fittings or services and so cannot verify that they are connected, in working order or fit for purpose. A buyer must check the availability of any property and make an appointment to view before embarking on any journey to see a property.

