



Flat 2, 13 Southside Street, Barbican, Plymouth, Devon, PL1 2LA



# Guide Price £180,000



Lang Town and Country are delighted to offer this stunning first floor modern apartment nestled in a coveted location in the heart of Plymouth's vibrant Barbican waterfront and close to the historic Plymouth Hoe. Comprising six recently developed units, this building boasts a contemporary and opulent aesthetic.

This beautiful apartment would be ideally suited as a luxury home or an ideal investment opportunity, as it is currently generating a substantial income as a holiday rental, due to its prime location.

Ideal for a discerning individual or couple seeking a luxurious yet low-maintenance residence, this spacious one-bedroom apartment epitomizes elegance. The property features a splendid open-plan kitchen/living area adorned with top-of-the-line appliances, ample space for sizable furnishings, and expansive windows/patio doors offering captivating views.

The generously proportioned double bedroom is bathed in natural light and affords ample space for accommodating substantial bedroom furniture and storage solutions.

Exuding the same sleek ambiance as the rest of the residence, the bathroom showcases impeccable fixtures and fittings, fostering an atmosphere of serenity.

Beyond the confines of the apartment lies a vibrant neighbourhood teeming with an array of bars, bistros, boutique shops, and quaint coffee houses, all steeped in rich history.

## Lease Information

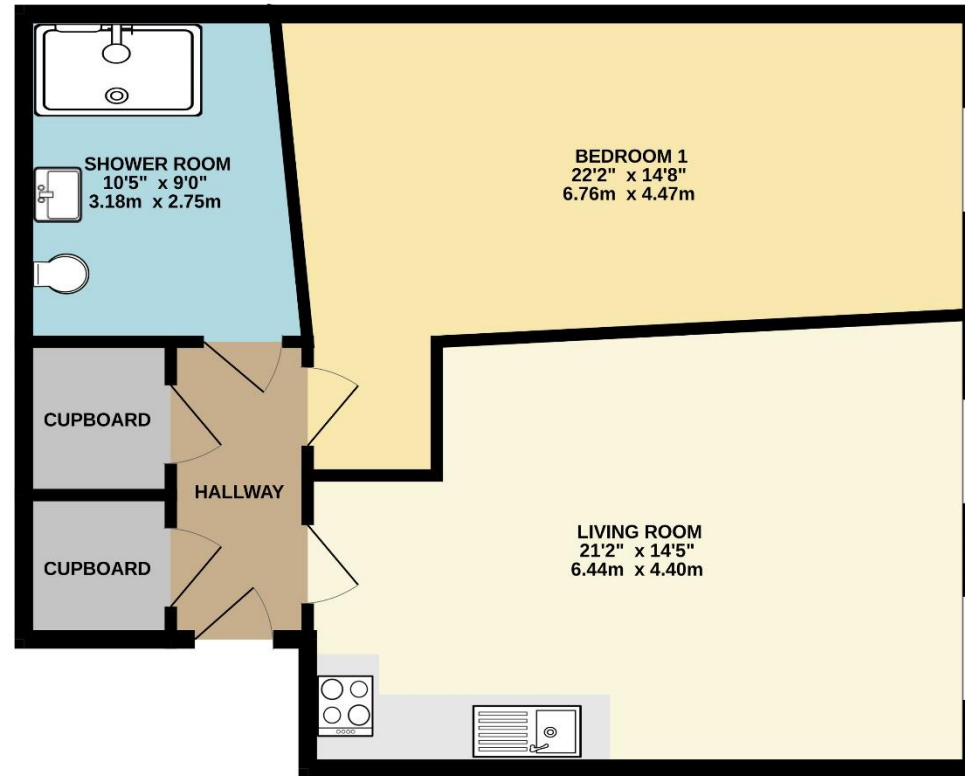
We understand the apartment is held on Lease with 999 years remaining and subject to a service charge of approximately £1600 per year from \*DATE\* but this is subject to change. The above information is provided in good faith although we would recommend that prospective purchasers consult their own solicitor for formal verification.



To view this property call Lang Town & Country Estate Agents on [01752 200909](tel:01752200909)



FIRST FLOOR  
687 sq.ft. (63.8 sq.m.) approx.



TOTAL FLOOR AREA : 687 sq.ft. (63.8 sq.m.) approx.

Whilst every attempt has been made to ensure the accuracy of the floorplan contained here, measurements of doors, windows, rooms and any other items are approximate and no responsibility is taken for any error, omission or mis-statement. This plan is for illustrative purposes only and should be used as such by any prospective purchaser. The services, systems and appliances shown have not been tested and no guarantee as to their operability or efficiency can be given.  
Made with Metropix ©2025

Lang Town & Country  
6 Mannamead Road  
Plymouth  
PL4 7AA  
Tel: 01752 200909  
Email: [waterside@langtownandcountry.com](mailto:waterside@langtownandcountry.com)  
[www.langtownandcountry.com](http://www.langtownandcountry.com)

Lang Town & Country endeavour to ensure the accuracy of property details produced and displayed, we have not tested any apparatus, equipment, fixtures, fittings or services and so cannot verify that they are connected, in working order or fit for purpose. A buyer must check the availability of any property and make an appointment to view before embarking on any journey to see a property.

