



34 Austin Crescent, Crownhill, Plymouth, Devon, PL6 5QD

Price £475,000



This unique detached dormer bungalow occupies magnificent grounds of approximately 1/3 of an acre and is well screened and secluded by established hedging and trees. The bungalow enjoys considerable seclusion and fine views towards distant moorland.

The accommodation, complete with gas fired central heating and uPVC double glazing, comprises of an entrance porch, a hallway, the master bedroom fitted with wardrobes, a separate dressing room and en-suite shower room. There is another spacious bedroom, a family bathroom, a dining room and a sitting room with sliding doors to the rear garden. There is also a kitchen with a range of fitted units and access to a separate utility room. There are spiral steps leading to the first floor where there are a further two double bedrooms and a family shower room. From both bedrooms there are wonderful and far-reaching views across towards the North of the City and Dartmoor.

Externally, the property is approached by a long driveway with parking for several cars and access to the detached garage with a workshop behind it. The garage has an up and over door. There are well maintained gardens to the front and rear, with the rear gardens being a wonderful feature of this property. They are expansive, mainly laid to lawn with a wide variety of shrubs, bushes and trees.

The garden also offers building plot potential (subject to the appropriate planning permissions and consents).

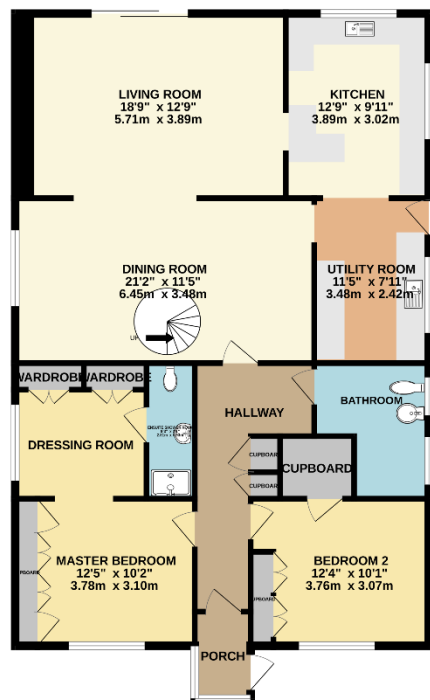
We recommend an early viewing to appreciate this versatile property situated on an outstanding plot.



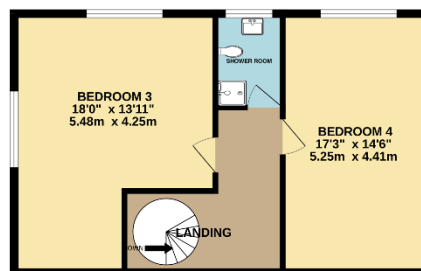
To view this property call Lang Town & Country Estate Agents on 01752 256000.



GROUND FLOOR



1ST FLOOR



Whilst every attempt has been made to ensure the accuracy of the floorplan contained here, measurements of doors, windows, rooms and any other items are approximate and no responsibility is taken for any error, omission or mis-statement. This plan is for illustrative purposes only and should be used as such by any prospective purchaser. The services, systems and appliances shown have not been tested and no guarantee as to their operability or efficiency can be given.
Made with Metropix 6/2024



Lang Town & Country
6 Mannamead Road
Plymouth
PL4 7AA

Tel: 01752 456000

Email: property@langtownandcountry.com

www.langtownandcountry.com

Lang Town & Country endeavour to ensure the accuracy of property details produced and displayed, we have not tested any apparatus, equipment, fixtures, fittings or services and so cannot verify that they are connected, in working order or fit for purpose. A buyer must check the availability of any property and make an appointment to view before embarking on any journey to see a property.

