



LANG TOWN  
& COUNTRY

455 Taunton Avenue, Whiteleigh, Plymouth, PL5 4HW





# Price £180,000



Positioned in the residential area of Whitleigh and offered chain-free, this two-bedroom terraced house presents a fantastic opportunity for those looking to put their personal touch on a new home. In need of some renovation, this property has great potential to be transformed into a modern and stylish residence.

The accommodation includes an entrance hall leading to a spacious sitting room, ideal for relaxing and entertaining. The kitchen/diner provides ample space for family meals and offers the chance to create a modern, functional kitchen. Upstairs, you'll find two generous double bedrooms, with the second bedroom featuring a built-in cupboard and housing the boiler. The shower room completes the first floor.



Externally, the property benefits from a low-maintenance patio garden, perfect for enjoying outdoor time. Additionally, this house boasts a rare double garage with an up-and-over door, providing ample parking or additional storage space an unusual feature for this type of property.

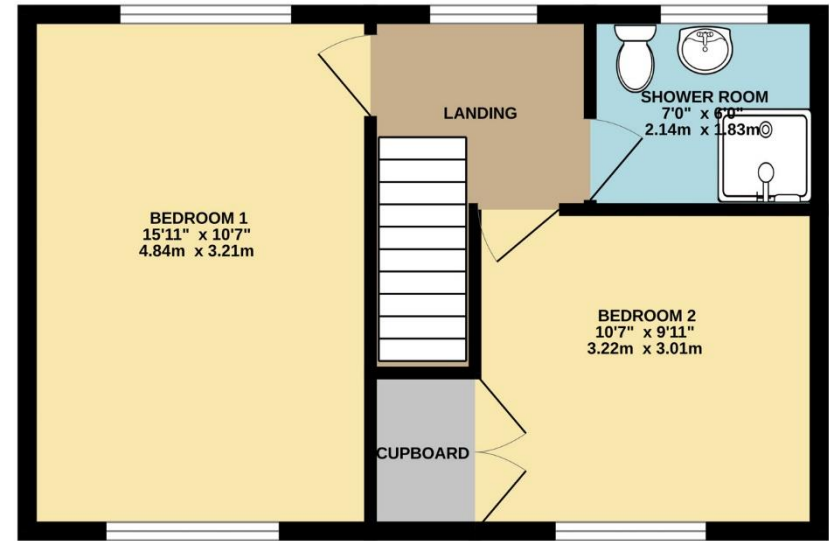
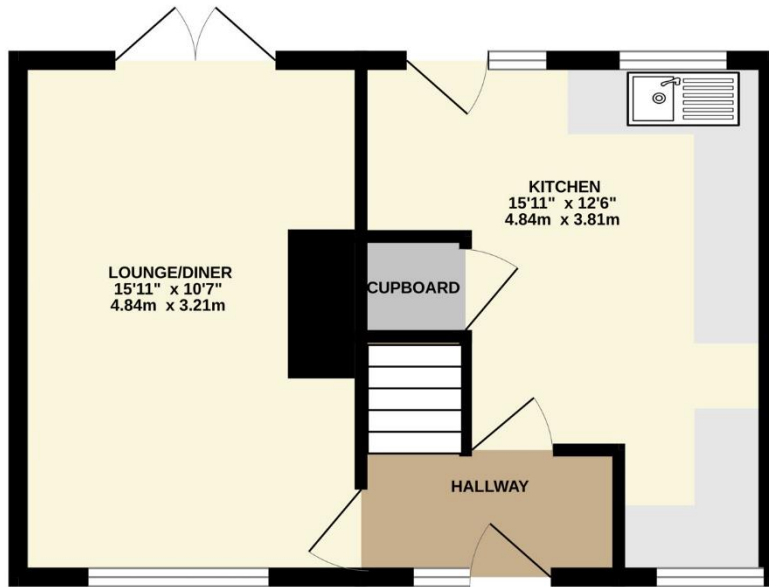
With its prime location and potential, this home is a must-see for buyers looking for a project. Don't miss the chance to make it your own.

To view this property call Lang Town & Country Estate Agents on **01752 256000**

[www.langtownandcountry.com](http://www.langtownandcountry.com)







TOTAL FLOOR AREA : 753 sq.ft. (69.9 sq.m.) approx.

Whilst every attempt has been made to ensure the accuracy of the floorplan contained here, measurements of doors, windows, rooms and any other items are approximate and no responsibility is taken for any error, omission or mis-statement. This plan is for illustrative purposes only and should be used as such by any prospective purchaser. The services, systems and appliances shown have not been tested and no guarantee as to their operability or efficiency can be given.

Made with Metropix ©2024



Lang Town & Country  
6 Mannamead Road  
Plymouth  
PL4 7AA  
Tel: 01752 256000  
Email: [property@langtownandcountry.com](mailto:property@langtownandcountry.com)  
[www.langtownandcountry.com](http://www.langtownandcountry.com)

Lang Town & Country endeavour to ensure the accuracy of property details produced and displayed, we have not tested any apparatus, equipment, fixtures, fittings or services and so cannot verify that they are connected, in working order or fit for purpose. A buyer must check the availability of any property and make an appointment to view before embarking on any journey to see a property.

