



Ocean House, 4 Woodlands End, Glenholt, Plymouth, Devon, PL6 7RE

Offers Over £1,100,000

Step into luxury and exclusivity with this stunning five-bedroom detached house with its own indoor leisure complex in a highly sought after location.

Ocean House is situated at the end of a gated private road and offers a high degree of privacy, peace and seclusion. The entrance vestibule boasts an impressive white porcelain floor which continues into the hallway where the luxury finish of this property is immediately evident, including a seamless, glass balustrade leading to the upper floor. The hallway in turn flows effortlessly through to the stunning open plan kitchen/diner, perfect for hosting, with a full range of integrated appliances including new hob, two ovens, washing machine, dish washer and fridge freezer. In turn the kitchen/diner flows into a family room/ reading room. This unique room has a commissioned feature wall, built-in bookcase, skylight, and full-length bi fold doors opening out to the rear garden. The reception rooms continue with a cinema room featuring a fantastic media wall and a tropical fish tank dividing the lounge and kitchen. A study/bedroom five and a spacious cloakroom complete the range of excellent rooms on offer on the ground floor.

Ascend to the first floor and discover a haven of comfort and style. Three generously sized bedrooms and a glorious master suite await. The crown jewel, the master suite, is adorned with bespoke fitted wardrobes, reflecting exquisite craftsmanship and sophistication. Moreover, the master suite includes a meticulously designed and luxurious en-suite with double basins and double shower.

To view this property call Lang Town & Country Estate Agents on **01752 256000**



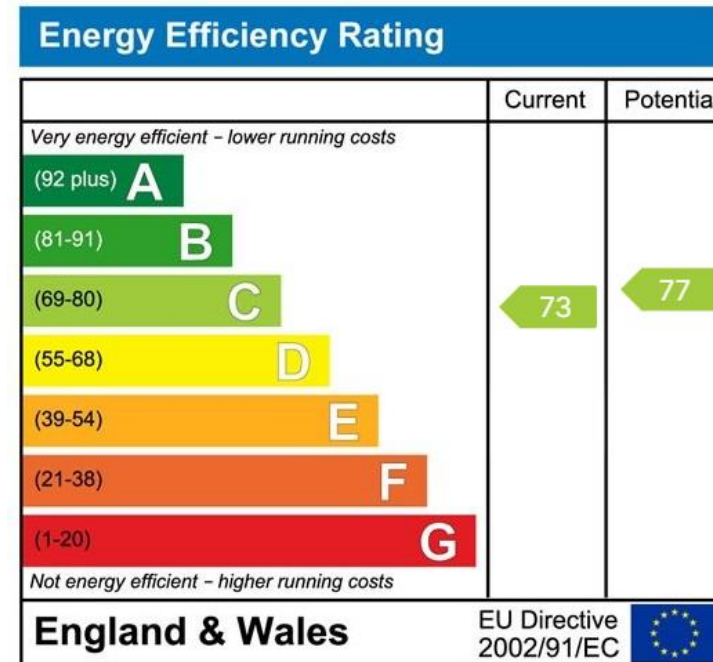


Continued

Entertainment and leisure take centre stage with the addition of a lavish swimming pool complex complemented by a seven-person jacuzzi, dedicated gym, and beauty salon area. The complex is triple aspect and overlooks the garden and surrounding woodland, with additional dual aspect bi-fold doors leading to a large patio on one side, and a pleasant, decked area on the other. This addition to the property provides a wealth of relaxation and wellness facilities on your doorstep.

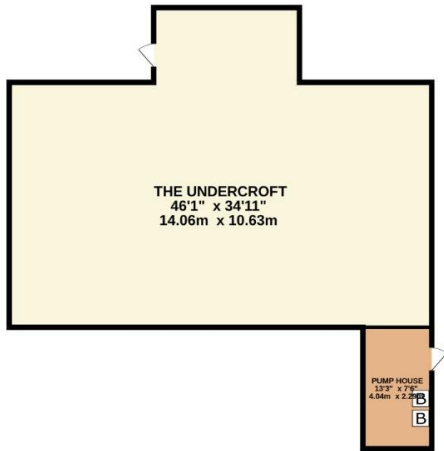
Situated in the centre of a 0.46-acre plot, this property offers varied and generous amounts of outdoor space all around, including landscaped gardens and private woodland, as well as an expansive driveway for 6-8 cars. There is also a double garage.

With meticulous attention to detail and a blend of elegance and comfort, this home defines sophistication and indulgence in an enviable location, presenting an extraordinary living experience for those seeking the pinnacle of refined living.





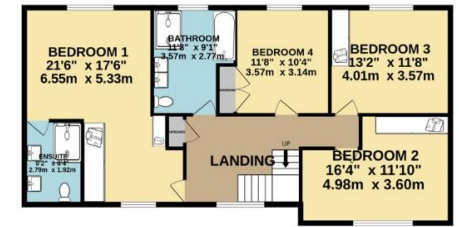
LOWER GROUND FLOOR
1462 sq.ft. (135.8 sq.m.) approx.



GROUND FLOOR
3117 sq.ft. (289.6 sq.m.) approx.



1ST FLOOR
1033 sq.ft. (96.0 sq.m.) approx.



TOTAL FLOOR AREA : 5612 sq.ft. (521.3 sq.m.) approx.

Whilst every attempt has been made to ensure the accuracy of the floorplan contained here, measurements of doors, windows, rooms and any other items are approximate and no responsibility is taken for any error, omission or mis-statement. This plan is for illustrative purposes only and should be used as such by any prospective purchaser. The services, systems and appliances shown have not been tested and no guarantee as to their operability or efficiency can be given.
Made with Metropix ©2023





Offers Over £1,100,000

Ocean House, 4 Woodlands End, Glenholt, Plymouth, Devon, PL6 7RE

LANG TOWN
& COUNTRY
SALES



Lang Town & Country
6 Mannamead Road,
Mannamead Plymouth Devon PL4 7AA
Tel: 01752 256000
Email: property@langtownandcountry.com
www.langtownandcountry.com

Lang Town & Country endeavour to ensure the accuracy of property details produced and displayed, we have not tested any apparatus, equipment, fixtures, fittings or services and so cannot verify that they are connected, in working order or fit for purpose. A buyer must check the availability of any property and make an appointment to view before embarking on any journey to see a property.

