



17 Cresthill Road, Beacon Park, Plymouth, Devon, PL2 2RG



Price £350,000



Nestled at the end of a tranquil cul-de-sac in the popular residential area of Beacon Park, this detached bungalow is presented in immaculate condition and offers a perfect blend of modern living and serene surroundings. The property features a block paved driveway with ample parking space, leading to a single garage and a long level driveway.

Upon entering, you are greeted by a welcoming entrance hall that leads you to the rest of the accommodation, where you will find a spacious lounge, boasting hard-wearing flooring, charming bay window and an electric fireplace, perfect for cosy evenings.

The Wren kitchen is a culinary delight with Quartz worktops and equipped with an extensive range of wall and base units, Neff double oven, Bosch induction hob, integrated dishwasher, fridge and freezer. The kitchen also includes soft closing drawers, a Blanco sink, and durable oak effect flooring, making it both stylish and functional. Adjacent to the kitchen is the dining room, featuring sliding doors that open directly onto the garden, ideal for indoor-outdoor living and entertaining.



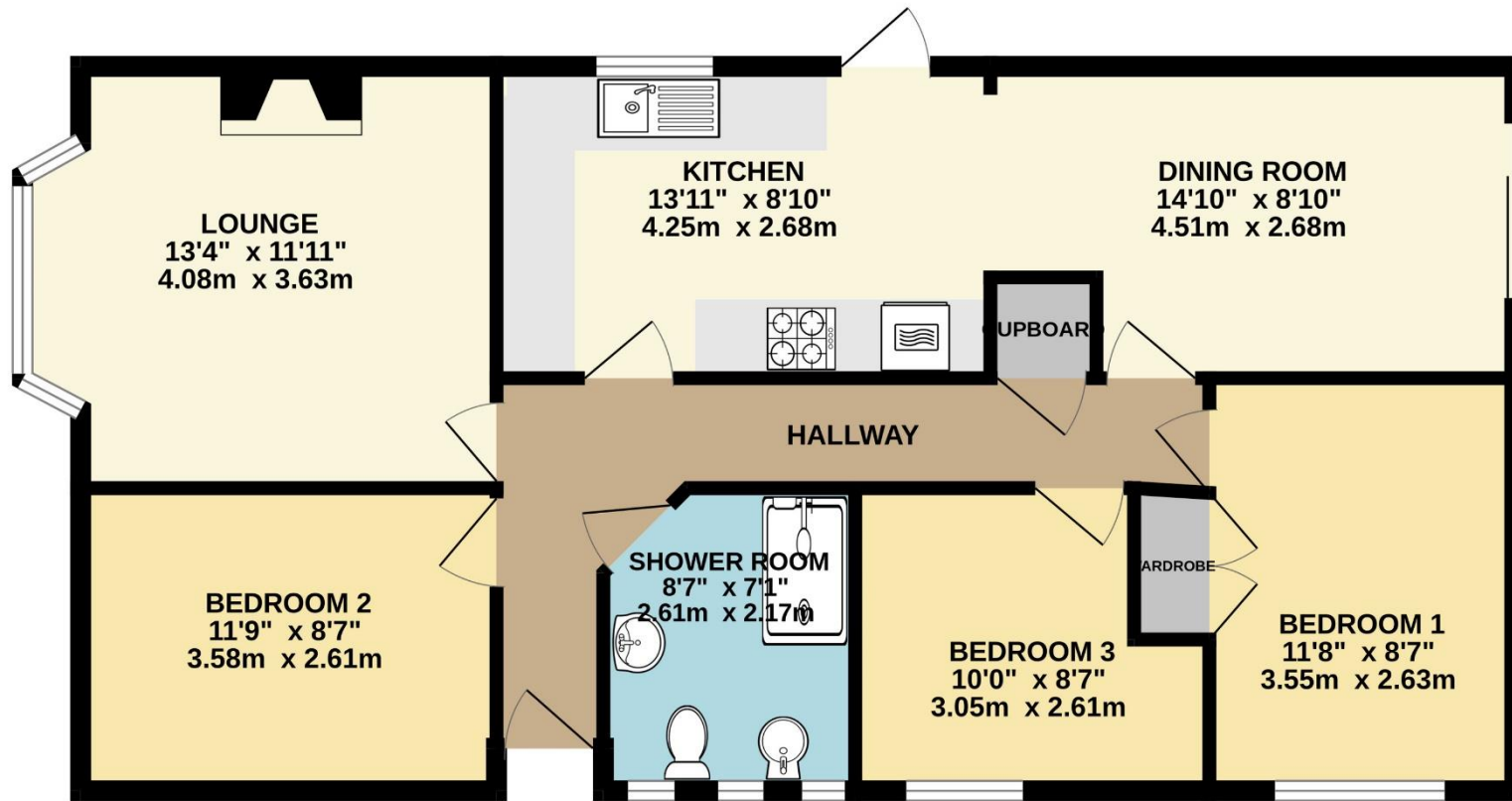
The bungalow comprises three generously sized double bedrooms, each offering comfort and space. The luxury shower room is a sanctuary of elegance, complete with walk-in double shower enclosure featuring both rainfall and handheld showers, a bidet, WC, wash hand basin with vanity storage and a walled mirror with integrated lighting.

The exterior of the property is equally impressive with a low maintenance rear garden that boasts a wide variety of colourful plants, well stocked flower beds and fruit bushes, The garden includes a greenhouse, and an outbuilding, providing additional storage and gardening opportunities. The wrap-around access ensures convenience and accessibility throughout the entire property.

This pristine bungalow is a rare find, combining modern amenities with a peaceful setting, making it an ideal home for those seeking, comfort, style and tranquillity.

To view this property call Lang Town & Country Estate Agents on **01752 256000**.





TOTAL FLOOR AREA : 835 sq.ft. (77.6 sq.m.) approx.

Whilst every attempt has been made to ensure the accuracy of the floorplan contained here, measurements of doors, windows, rooms and any other items are approximate and no responsibility is taken for any error, omission or mis-statement. This plan is for illustrative purposes only and should be used as such by any prospective purchaser. The services, systems and appliances shown have not been tested and no guarantee as to their operability or efficiency can be given.
Made with Metropix ©2024



Lang Town & Country
6 Mannamead Road
Mutley
Plymouth
PL4 7AA
Tel: 01752 256000
Email: property@langtownandcountry.com

Lang Town & Country endeavour to ensure the accuracy of property details produced and displayed, we have not tested any apparatus, equipment, fixtures, fittings or services and so cannot verify that they are connected, in working order or fit for purpose. A buyer must check the availability of any property and make an appointment to view before embarking on any journey to see a property.

