



LANG TOWN
& COUNTRY

19 Ashford Crescent, Mannamead, Plymouth, Devon, PL3 5AB



Guide Price £220,000



Lang Town and Country are delighted to offer this semi-detached house, situated in a prime residential area of Plymouth. The property is close to all local amenities such as local shops, schools, Mutley Plain shopping area is within easy access and the vibrant Plymouth City Centre is approximately two miles away.

The property comprises an entrance hallway with the stairs to the first floor, with doors to the lounge with a window to the front and a fireplace with a back boiler and communicating doors to a separate dining room. The kitchen is fully fitted with a stainless-steel sink unit, a range of base units with matching wall cupboards, tiled walls and windows and a door leading to the rear garden. There is an integrated oven, hob with an extractor hood.

On the first floor there are three bedrooms, with bedroom one and three having fitted bedroom furniture. The separate shower room comprises a shower cubicle, wash hand basin, low flush W.C and fully tiled walls.

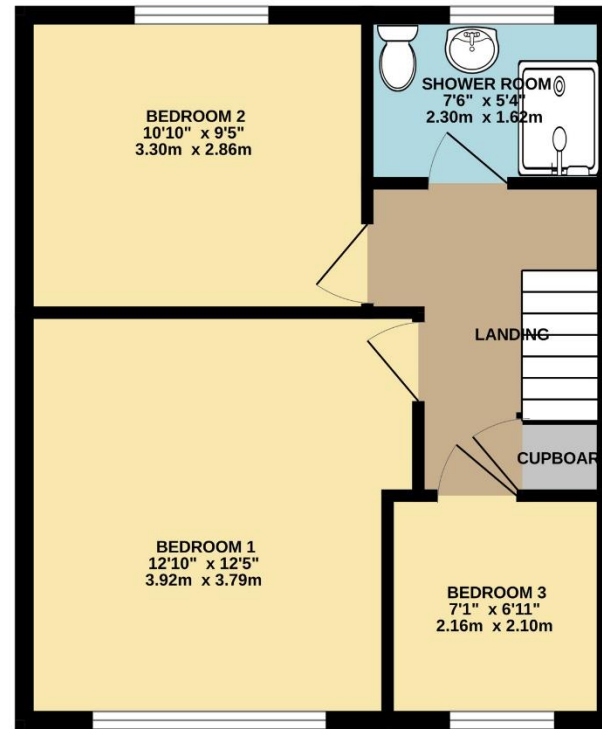
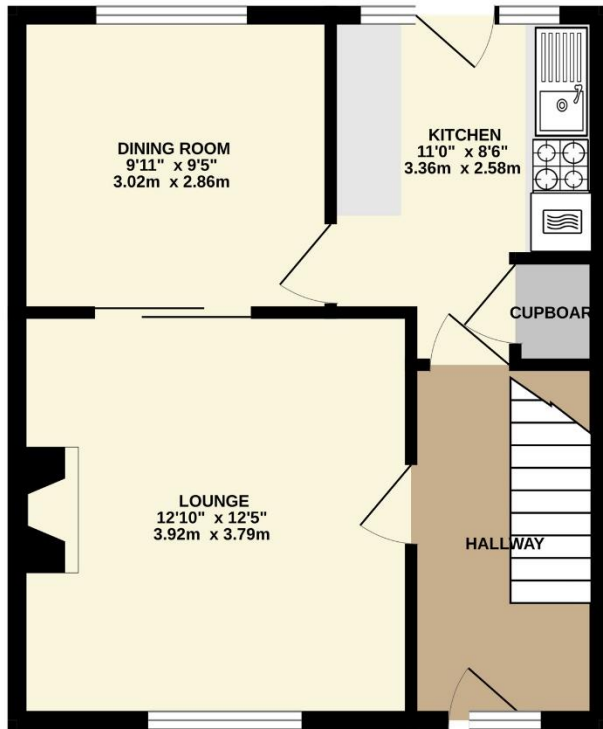
Externally there is a front garden with a variety of shrubs and bushes with access to the shared driveway leading to the garage. The good-sized rear garden is enclosed by a wall with a lawn and raised gravelled area.

An early viewing is strongly recommended to appreciate this property with potential is a great location.



To view this property call Lang Town & Country Estate Agents on **01752 256000**





TOTAL FLOOR AREA : 817 sq.ft. (75.9 sq.m.) approx.

Whilst every attempt has been made to ensure the accuracy of the floorplan contained here, measurements of doors, windows, rooms and any other items are approximate and no responsibility is taken for any error, omission or mis-statement. This plan is for illustrative purposes only and should be used as such by any prospective purchaser. The services, systems and appliances shown have not been tested and no guarantee as to their operability or efficiency can be given.
Made with Metropix ©2024



Lang Town & Country
6 Mannamead Road
Plymouth
PL4 7AA
Tel: 01752 256000
Email: property@langtownandcountry.com
www.langtownandcountry.com

Lang Town & Country endeavour to ensure the accuracy of property details produced and displayed, we have not tested any apparatus, equipment, fixtures, fittings or services and so cannot verify that they are connected, in working order or fit for purpose. A buyer must check the availability of any property and make an appointment to view before embarking on any journey to see a property.

