



LANG TOWN
& COUNTRY

57 Waterloo Street, Stoke, Plymouth, Devon, PL1 5RS



Price £350,000



Lang Town and Country are delighted to present for sale this stunning and fully refurbished Georgian mid terrace home located in the highly sought after residential district of Stoke.

Stoke is a sought-after residential district, much of which is a conservation area due to the high density of Regency and Victorian homes in the area. Located approx. 1 mile from Plymouth centre offering easy access to Plymouth ferry port and within 3 miles of the A38. Primary schools in the area include Stoke Damerel and Stuart Road Primary School, whilst secondary schooling within the area includes Devonport High School for Boys and Stoke Damerel Community College. City College Plymouth is located on the southern fringes of the area. There are a number of large recreational areas including Mount Pleasant Recreation Ground, Victoria Park at Mill Bridge and Devonport Park within the area as well as the Ecological Park located off Milehouse Road.

The accommodation comprises an entrance hallway with stairs leading to the upper floors and a ground floor cloakroom. The impressive sitting room is light and airy with a dual aspect. The impressive fully fitted kitchen/diner has a full range of base units with matching wall cupboards and integrated appliances including gas oven and dishwasher. This spacious dual aspect room has windows to the side and French doors leading to the enclosed rear garden and parking area.



On the first floor there are three double bedrooms, with the master having a walk-in wardrobe and an en-suite shower. The luxury family bathroom comprises a freestanding bath, a separate shower cubicle, W.C and vanity unit. On the top floor there are two further bedrooms.

Externally there is an enclosed rear garden courtyard with access to a parking area.

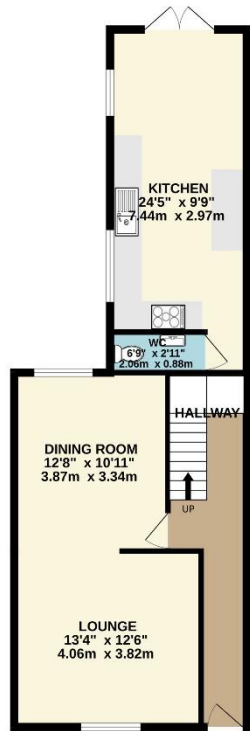
We would recommend an early viewing to appreciate this beautiful family home in a popular residential area.

To view this property call Lang Town & Country Estate Agents on **01752 256000**.

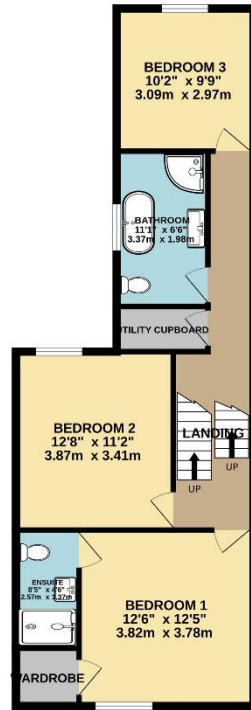
www.langtownandcountry.com



GROUND FLOOR
655 sq.ft. (60.9 sq.m.) approx.



1ST FLOOR
664 sq.ft. (61.7 sq.m.) approx.



2ND FLOOR
331 sq.ft. (30.8 sq.m.) approx.



TOTAL FLOOR AREA : 1650 sq.ft. (153.3 sq.m.) approx.

Whilst every attempt has been made to ensure the accuracy of the floorplan contained here, measurements of doors, windows, rooms and any other items are approximate and no responsibility is taken for any error, omission or mis-statement. This plan is for illustrative purposes only and should be used as such by any prospective purchaser. The services, systems and appliances shown have not been tested and no guarantee as to their operability or efficiency can be given.
Made with Metropix ©2024



Lang Town & Country
6 Mannamead Road
Mutley
Plymouth
PL4 7AA
Tel: 01752 256000
Email: property@langtownandcountry.com

Lang Town & Country endeavour to ensure the accuracy of property details produced and displayed, we have not tested any apparatus, equipment, fixtures, fittings or services and so cannot verify that they are connected, in working order or fit for purpose. A buyer must check the availability of any property and make an appointment to view before embarking on any journey to see a property.

