



2, Glenhurst Road, Mannamead, Plymouth, Devon, PL3 5LT



Guide Price £400,000

Lang Town and Country are delighted to offer this substantial, four-bedroom, period property located in a very popular location, with the added benefit of a garage.

Mannamead is a great residential location, close to all local amenities, including local shops, schools, parks and opposite the popular, Whiteford Road tennis club. The bustling Plymouth city centre is approximately two miles away, with proximity to the historic Barbican and Plymouth Hoe.

The attractive, limestone fronted, end terraced house retains many of its period features, including moulded ceilings, an elegant staircase, and stunning fireplaces.

The accommodation comprises, an impressive entrance with beautiful stained-glass door and side lights leading to the hallway, there are stairs leading to the first floor with an ornate newel post and balustrade. The spacious lounge is light and airy with a bay window to the front and a wonderful fireplace. There is a good-sized separate breakfast room and dining room which leads to the kitchen. There is a separate cloakroom and useful utility room with a door leading to rear courtyard.

On the first floor there are four double bedrooms and two spacious bathrooms.

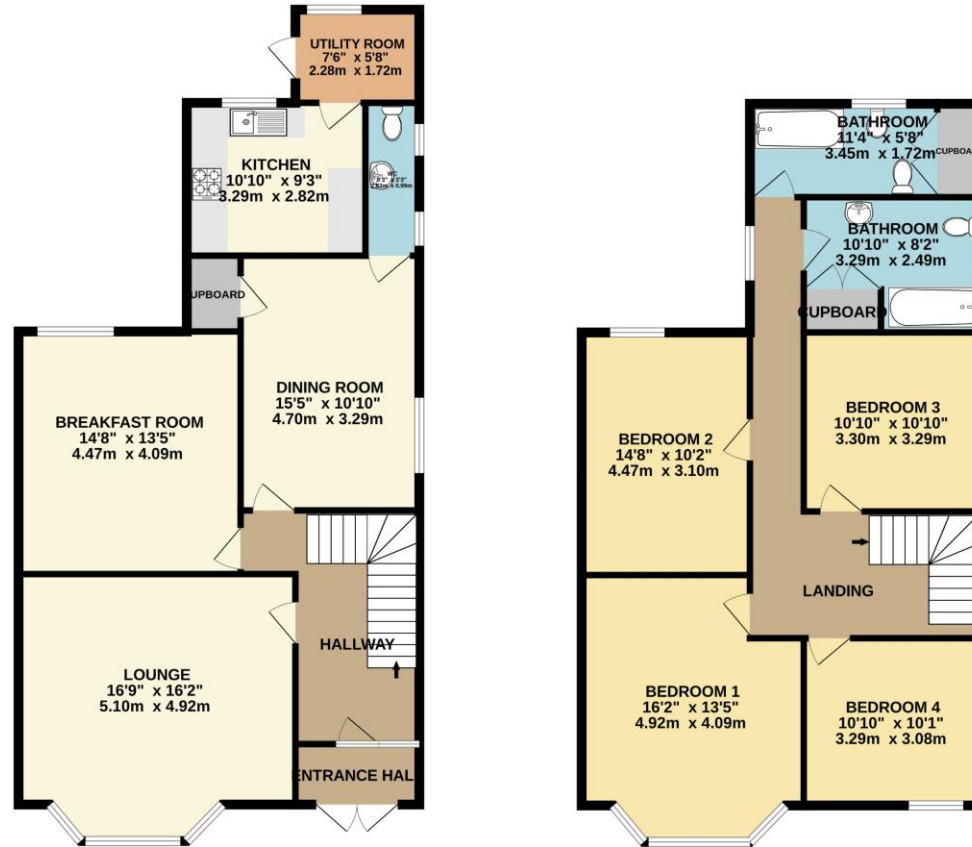
Externally there is a front garden with a variety of shrubs and bushes and to the rear is an enclosed courtyard. The property benefits from a garage situated in a separate block opposite the property.

We would recommend an early viewing to appreciate this spacious family home in a very popular location.



To view this property call Lang Town & Country Estate Agents on **01752 256000**.





TOTAL FLOOR AREA: 1855 sq.ft. (172.3 sq.m.) approx.
 Whilst every attempt has been made to ensure the accuracy of the floorplan contained here, measurements of doors, windows, rooms and any other items are approximate and no responsibility is taken for any error, omission or mis-statement. This plan is for illustrative purposes only and should be used as such by any prospective purchaser. The services, systems and appliances shown have not been tested and no guarantee as to their operability or efficiency can be given.
 Made with Metropix ©2023



Lang Town & Country
 6 Mannamead Road,
 Mannamead Plymouth Devon PL4 7AA
 Tel: 01752 256000
 Email: property@langtownandcountry.com
www.langtownandcountry.com

Lang Town & Country endeavour to ensure the accuracy of property details produced and displayed, we have not tested any apparatus, equipment, fixtures, fittings or services and so cannot verify that they are connected, in working order or fit for purpose. A buyer must check the availability of any property and make an appointment to view before embarking on any journey to see a property.

