

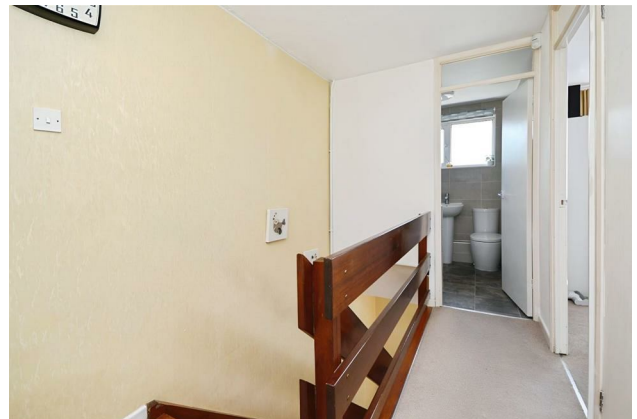
HUNTERS®

HERE TO GET *you* THERE

641 Whitchurch Lane, Whitchurch, Bristol, BS14 0TA

£290,000

Property Images



HUNTERS®

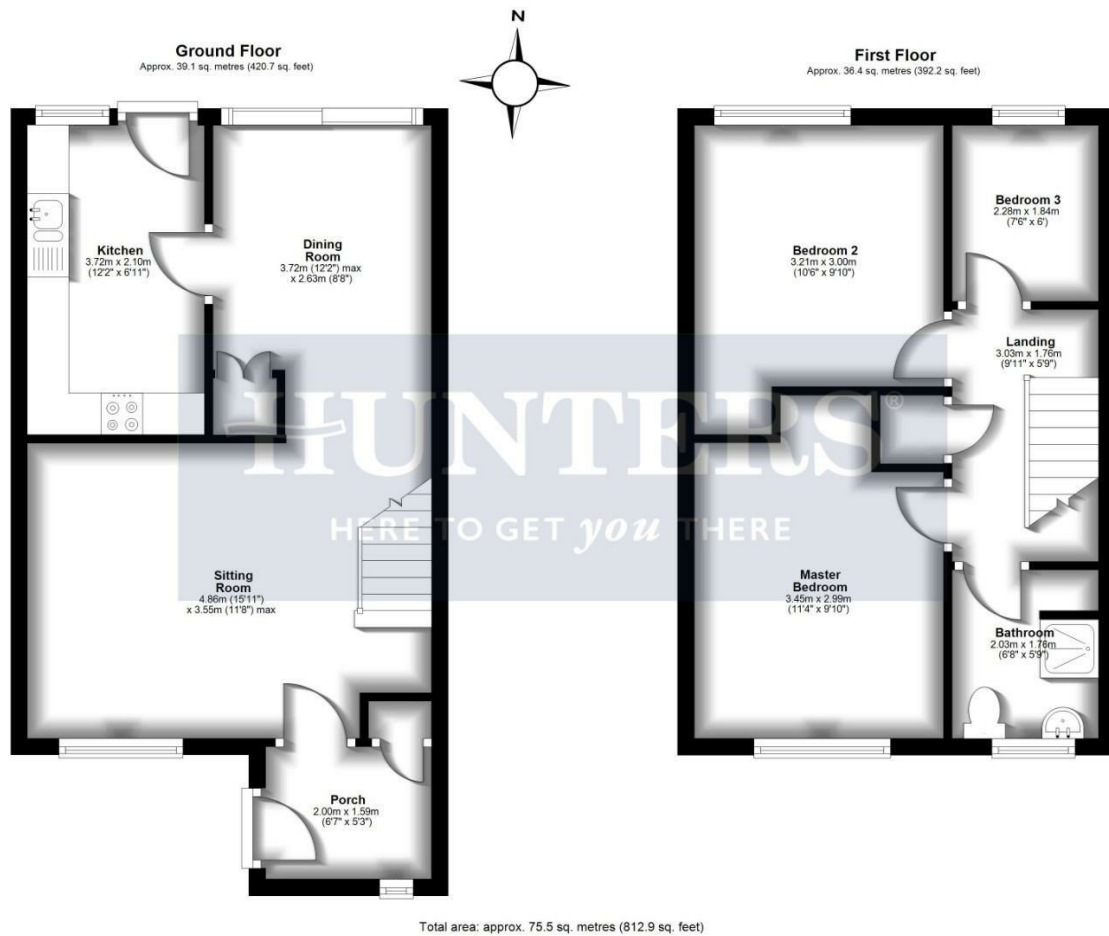
HERE TO GET *you* THERE

Property Images



HUNTERS®

HERE TO GET *you* THERE



EPC

Energy Efficiency Rating		
	Current	Potential
Very energy efficient - lower running costs		
(92 plus) A		87
(81-91) B	74	
(69-80) C		
(55-68) D		
(39-54) E		
(21-38) F		
(1-20) G		
Not energy efficient - higher running costs		
England & Wales		
EU Directive 2002/91/EC		

Map



Details

Type: House - Mid Terrace Beds: 3 Bathrooms: 1 Receptions: 2
Tenure: Freehold

We are delighted to present for sale this three-bedroom, mid terraced home. Ideally situated in a sought-after location with excellent public transport links, proximity to schools, and local amenities, perfect for first-time buyers, investors, or families alike. This property boasts three bedrooms, a modern bathroom, two reception rooms, and a kitchen.

The first reception room is a light and airy lounge, perfect for relaxing or entertaining guests. While the second reception room, which is being used as a dining room, provides access to the rear garden through patio doors, boasting natural light and a beautiful garden view.

The kitchen is well-lit with natural light and offers easy access to an enclosed rear garden, perfect for those summer barbecues or a safe space for children to play.

The master bedroom is generously proportioned, while the second bedroom comfortably accommodates a double bed. The third bedroom is currently being used as an office but could easily be converted back into a bedroom. The modern bathroom is equipped with a heated towel rail and a shower.

This house is graced with a front garden, a walkway path, and an entrance porch for welcoming guests adding to its charm. Additional features of the property include a garage, a storage shed in the rear garden, and both on-road and garage parking options.

Don't miss out on this opportunity to own a home in a prime location. Call us today to arrange a viewing!

Features

• Mid Terrace Home • Three Bedrooms • Lounge • Dining Room • Kitchen • Modern Bathroom • Enclosed Rear Garden • Storage Shed • Garage in a Block