

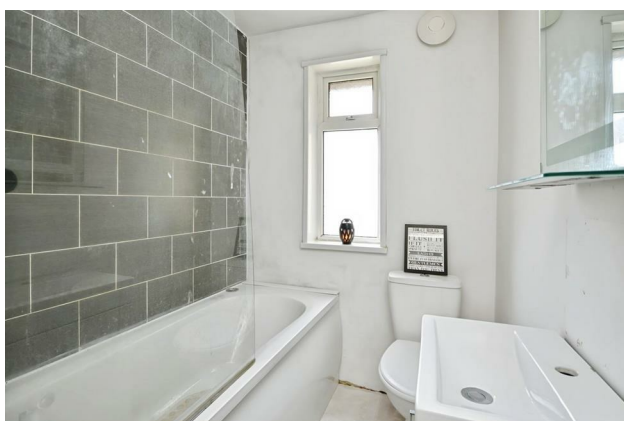
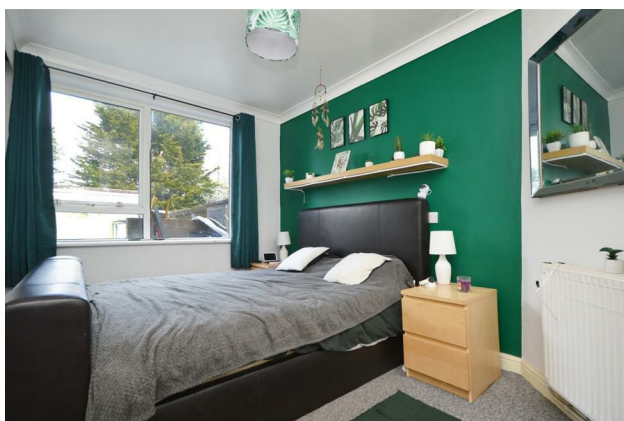
HUNTERS®

HERE TO GET *you* THERE

1 Gilda Close, Whitchurch, Bristol, BS14 9JU

£190,000

Property Images



HUNTERS®

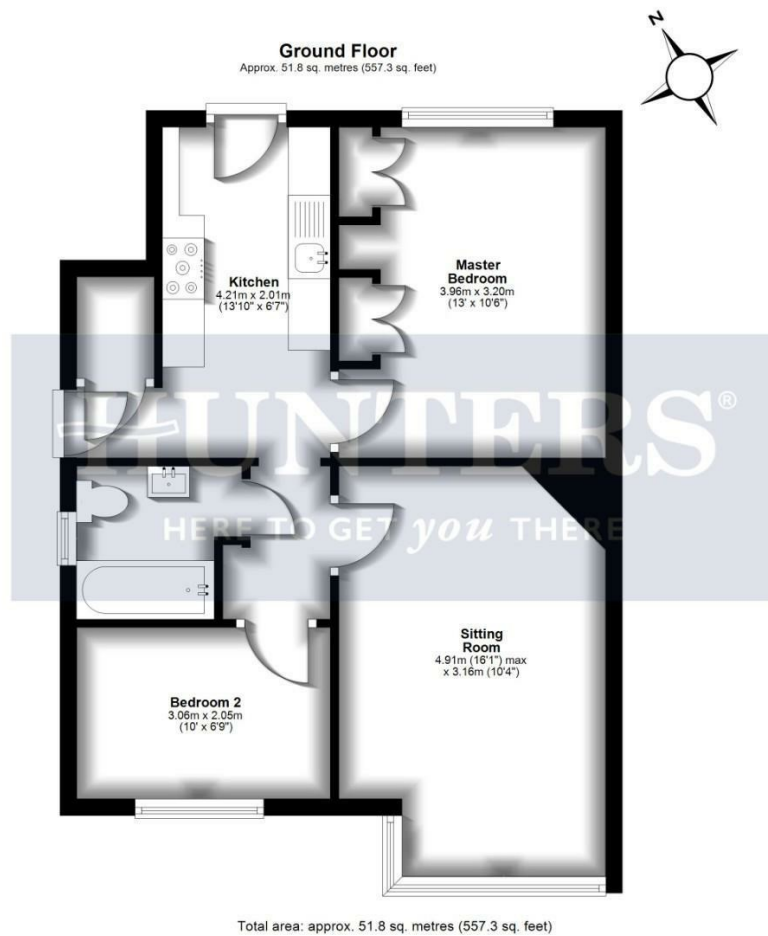
HERE TO GET *you* THERE

Property Images

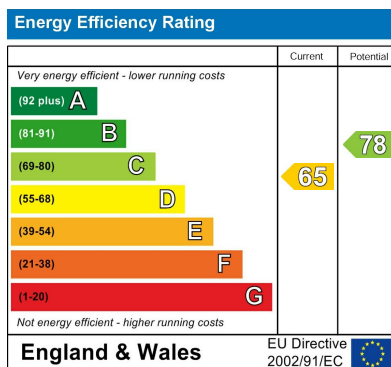


HUNTERS®

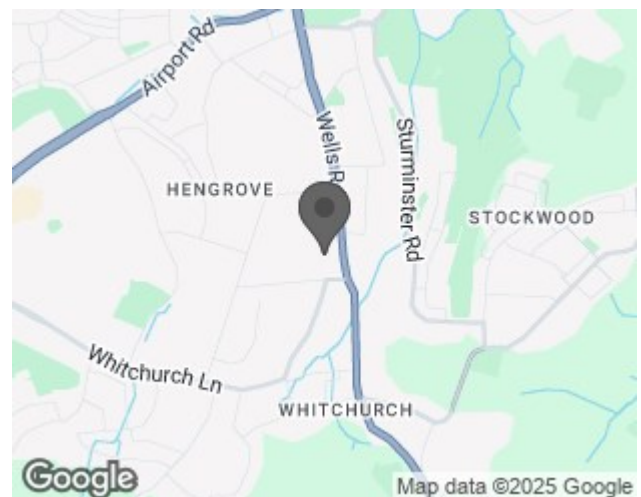
HERE TO GET *you* THERE



EPC



Map



Details

Type: Apartment Beds: 2 Bathrooms: 1 Receptions: 1 Tenure: Leasehold

Summary

For sale is this fantastic two-bedroom flat, ideally suited for first-time buyers or investors. The property is conveniently located with excellent public transport links, nearby schools, and a range of local amenities at your doorstep, making it an excellent investment opportunity or a wonderful place to call home.

The flat features a light and airy reception room, perfect for entertaining guests or relaxing after a long day. The kitchen is accessible via a hallway opening through to the kitchen and offers access to the garden, providing an ideal setup for those who enjoy indoor-outdoor living.

This property boasts two bedrooms, one of which is a comfortable double, and the other a cosy single, offering flexibility for a variety of living arrangements. There is also a well-appointed bathroom equipped with a heated towel rail.

Further benefits include a driveway to the front providing off street parking and a generous private garden to the rear.

In summary, this flat offers a fantastic blend of space, comfort, and convenience. Call today to arrange a viewing!

Features

- Ground Floor Apartment • Two Bedrooms • Lounge • Kitchen • Bathroom • Private Garden • Off Street Parking • Ideal for First Time Buyers • 115 Years remaining on Lease • £250 service charge