

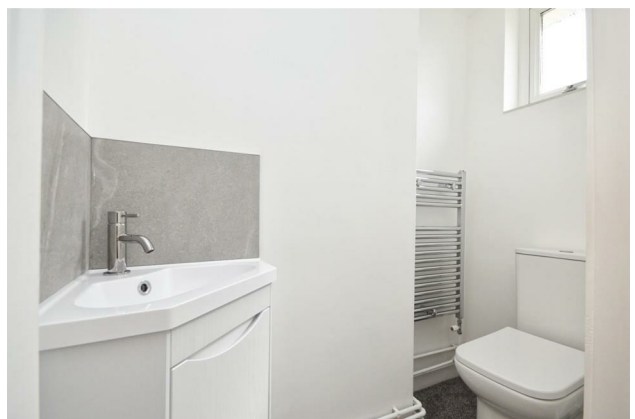
HUNTERS®

HERE TO GET *you* THERE

15 Smythe Croft, Bristol, BS14 0UB

£410,000

Property Images



Property Images



HUNTERS®

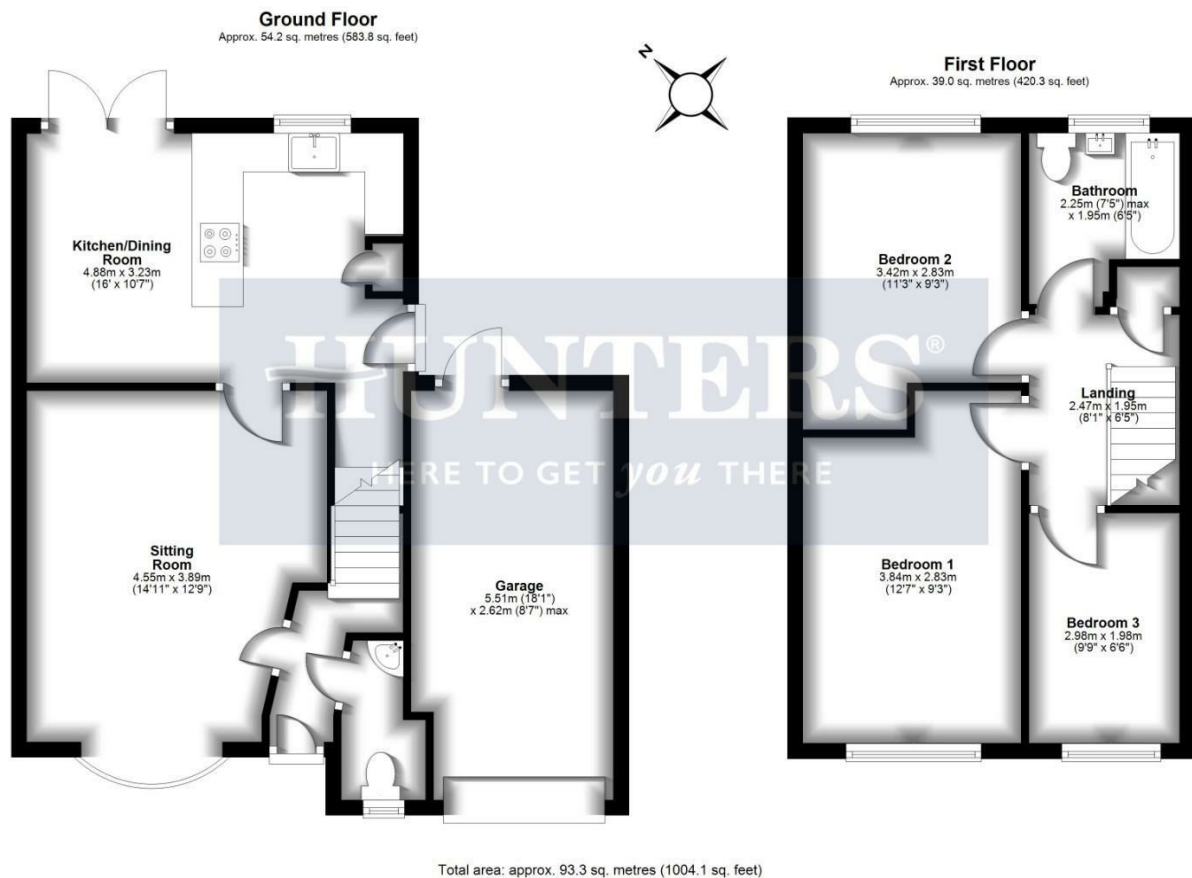
HERE TO GET *you* THERE

Property Images




HUNTERS®

HERE TO GET *you* THERE



EPC

Energy Efficiency Rating		
	Current	Potential
Very energy efficient - lower running costs		
(92 plus) A		87
(81-91) B		
(69-80) C		
(55-68) D	63	
(39-54) E		
(21-38) F		
(1-20) G		
Not energy efficient - higher running costs		
England & Wales		EU Directive 2002/91/EC 

Map



Details

Type: House - Detached Beds: 3 Bathrooms: 1 Receptions: 1
Tenure: Freehold

Discover this beautifully renovated detached home in a peaceful cul-de-sac on the sought-after Windways estate! Perfect for families, young couples, and downsizers, this immaculately presented property is truly "move-in ready."

The spacious, bright living area flows seamlessly into the open plan kitchen/diner to a large enclosed garden, creating the ideal space for relaxing, cooking, and entertaining. With three generously sized bedrooms and a stylish family bathroom, every corner of this home exudes quality. A convenient ground-floor W/C adds extra comfort.

An attached garage offers both storage and parking, while the potential to extend (STPP) gives you room to grow. With no onward chain, you can enjoy a quick and stress-free move.

This stunning home offers modern living with future possibilities. Don't miss out on this exceptional opportunity! Contact us today to arrange a viewing and make this dream home yours!

Features

- Detached Home, Three bedrooms • Recently Renovated to a High Standard • Light & Airy Lounge with natural light • Modern open plan Kitchen/Diner with Quartz worktops • Integrated Appliances Dishwasher, Fridge-freezer, Hob, Oven, Extractor Fan • Family Bathroom and Ground Floor W/C • Enclosed Rear Garden • Garage & Off Street Parking • Potential to Extend (STPP) • No Onward Chain!