



48 Saltash Road, Swindon

Swindon

mcfarlane  
property.co.uk

£140,000

# 48 Saltash Road

Swindon, SN2

A well presented two bedroom apartment set on the second floor of the McArthur Court development. This spacious home features a bright lounge/diner, fully fitted kitchen, two bedrooms, and a functional family bathroom with shower. Additional benefits include a garage with parking and excellent access to the town center and M4. Ideal for Investors and first-time buyers.

Council Tax band: C

Tenure: Leasehold 132 Years Remaining

EPC Energy Efficiency Rating: C

EPC Environmental Impact Rating: D





## 48 Saltash Road

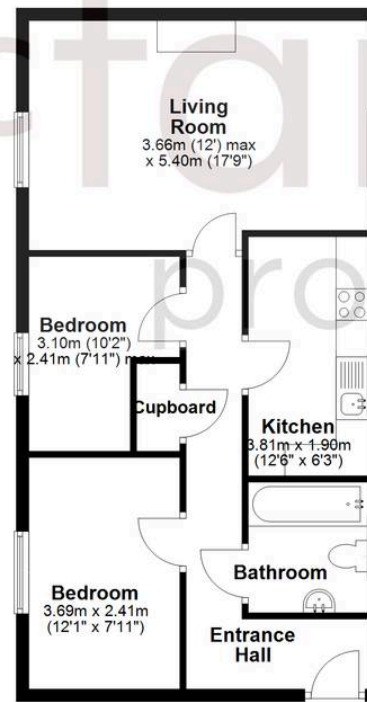
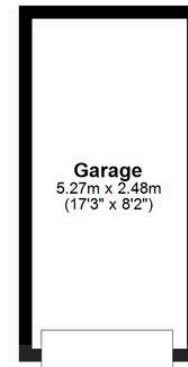
Swindon, SN2

- SECOND FLOOR APARTMENT
- GARAGE & ALLOCATED PARKING
- TWO BEDROOMS
- OPEN PLAN LIVING & DINING
- WALKING DISTANCE TO THE OUTLET VILLAGE
- NO ONWARD CHAIN



## Second Floor

Approx. 70.6 sq. metres (759.6 sq. feet)



Total area: approx. 70.6 sq. metres (759.6 sq. feet)

## McFarlane Sales & Lettings

McFarlane Sales & Letting Ltd, 28-30 Wood Street – SN1 4AB

01793 611841 • [lettings@mcfarlaneproperty.com](mailto:lettings@mcfarlaneproperty.com) • [www.mcfarlaneproperty.com/](http://www.mcfarlaneproperty.com/)

mcfarlane  
property.com