



67 Greywethers Avenue, Swindon

Swindon

mcfarlane
property.co.uk
£400,000

67 Greywethers Avenue

Swindon, Swindon

McFarlane Sales & Lettings present this beautifully maintained detached home in sought after Lakeside, Old Town. With two double bedrooms, two bathrooms, a shower room, open plan living, a sunroom, and log burner, it's close to Wood Street amenities and green spaces.

Council Tax band: D

Tenure: Freehold

EPC Energy Efficiency Rating: C

EPC Environmental Impact Rating: C





67 Greywethers Avenue

Swindon, SN3

McFarlane Sales & Lettings are pleased to present this beautifully maintained and distinctive detached home, located in the highly desirable Lakeside area of Old Town. Thoughtfully extended and tastefully updated, the property offers a welcoming entrance hall, a stylish ground floor shower room, a spacious sitting room featuring a charming bay window and a log burning fireplace, and a contemporary open plan kitchen/dining area that flows seamlessly into a bright and airy sunroom. Upstairs, you'll find two generously sized double bedrooms, one with an en-suite shower room, along with a modern family bathroom. Ideally positioned just a short stroll from the heart of Wood Street, the property enjoys easy access to a wide range of independent shops, cafés, restaurants, and pubs. For those who love the outdoors, there are plenty of nearby green spaces and scenic walks, offering a perfect balance of town convenience and tranquil surroundings.



67 Greywethers Avenue

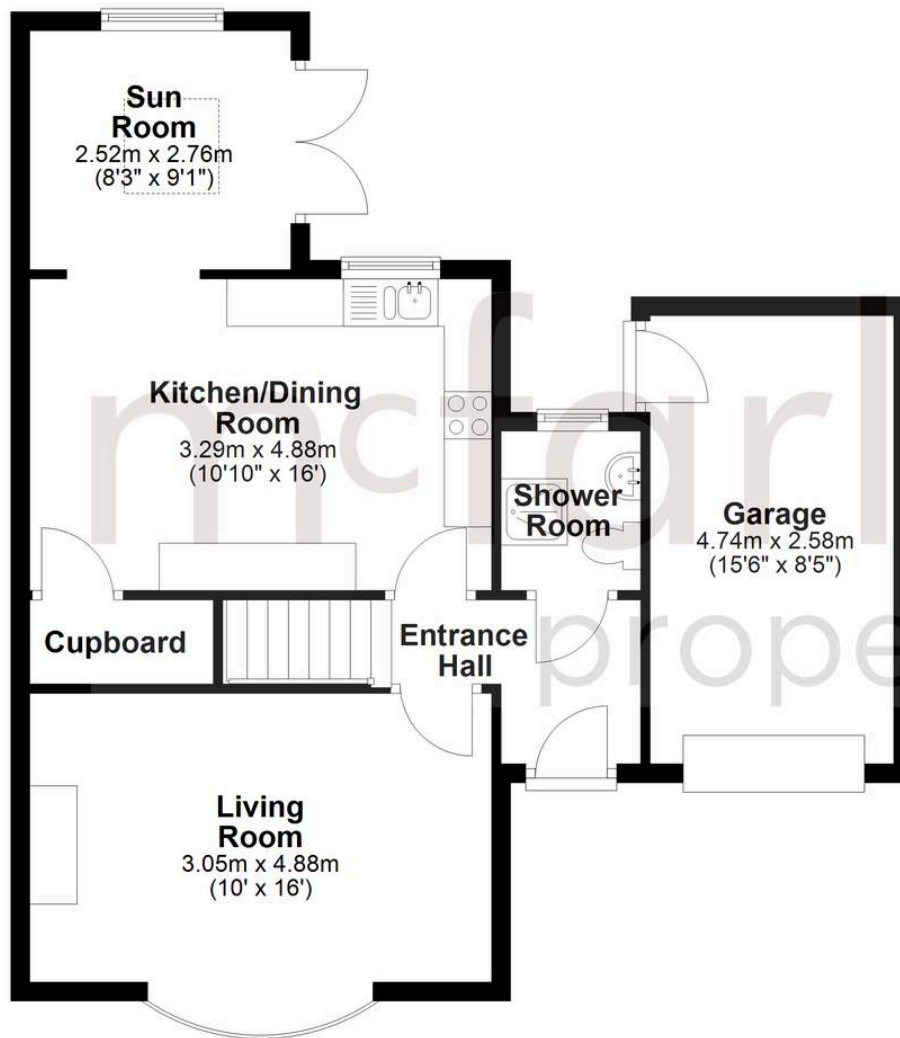
Swindon, SN3

- GARAGE & DRIVEWAY
- LAKESIDE LOCATION
- BAY FRONTED
- SUN ROOM
- SPACIOUS LIVING ACCOMODATION
- EN-SUITE TO MASTER



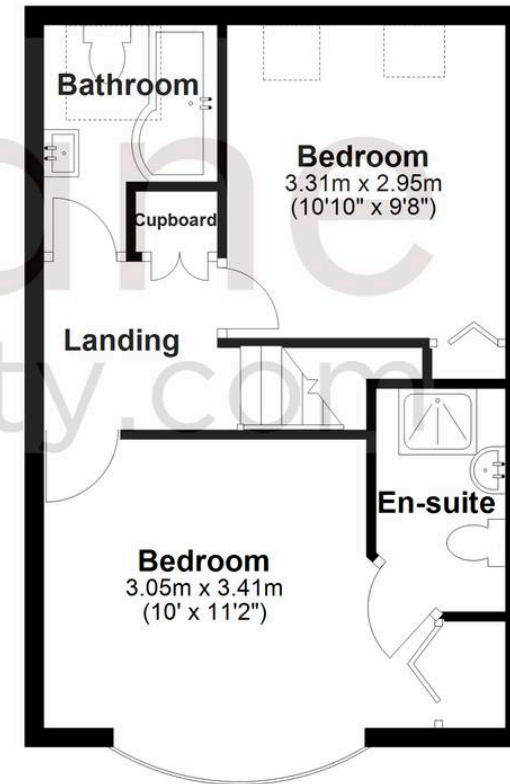
Ground Floor

Approx. 62.0 sq. metres (666.9 sq. feet)



First Floor

Approx. 37.0 sq. metres (398.8 sq. feet)



Total area: approx. 99.0 sq. metres (1065.7 sq. feet)

McFarlane Sales & Lettings

McFarlane Sales & Letting Ltd, 28-30 Wood Street – SN1 4AB

01793 296880 • oldtown@mcfarlaneproperty.com • www.mcfarlaneproperty.com/

mcfarlane
property.com