



97 Goddard Avenue, Swindon

Swindon

mcfarlane
property.co.uk

97 Goddard Avenue

Swindon, SN1

A rare, larger than average Victorian terrace on sought-after Goddard Avenue. Brimming with character, it offers three spacious receptions, four bedrooms, original features, attic with potential, long garden and garage. Prime Old Town location near shops, schools & commuter links.

Council Tax band: E

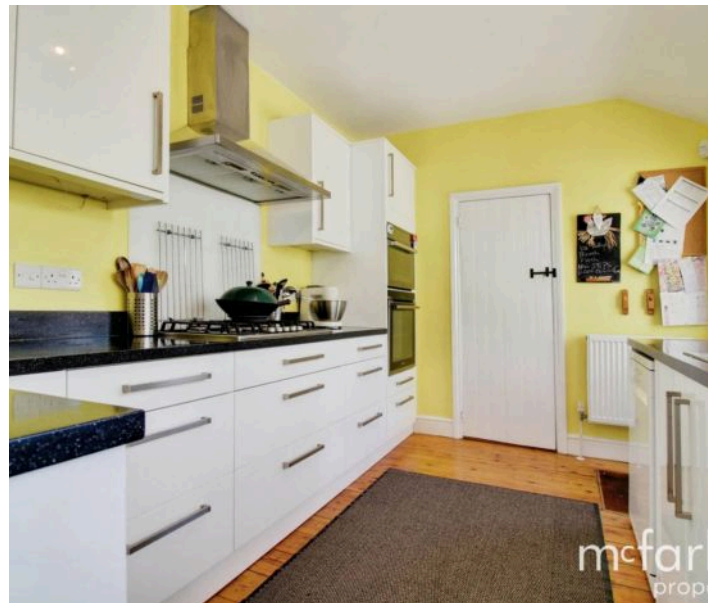
Tenure: Freehold





97 Goddard Avenue Swindon, SN1

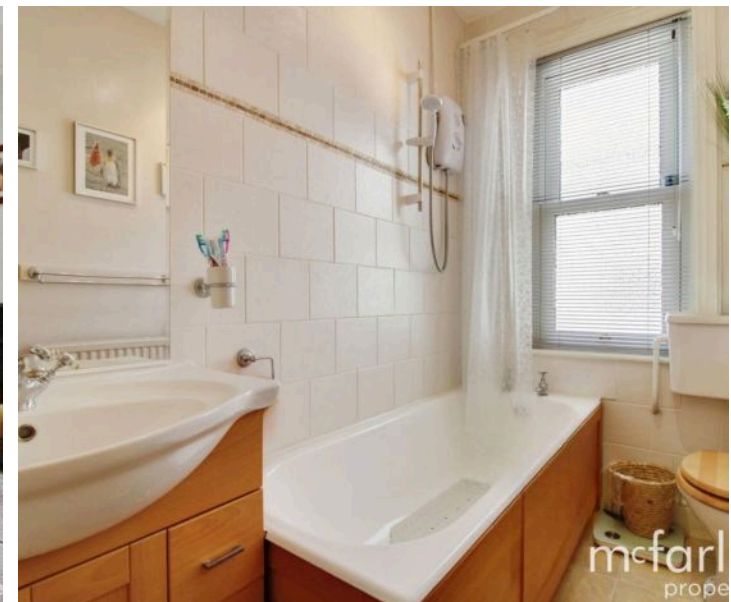
- FOUR BEDROOMS
- IMPRESSIVELY SPACIOUS
- VICTORIAN TERRACED
- ORIGINAL QUARRY TILES
- TAURUS SKIRTING
- SPACIOUS LOFT
- GARAGE & PARKING



97 Goddard Avenue

Swindon, SN1

McFarlane Sales and Lettings are proud to present this larger than average Victorian Terrace home boasting from a square bay window, only one of three in the avenue and additional room in the two main reception rooms, hallway and landing. The property oozes character including picture and dado rails, taurus skirting, high ceilings, original cornice and stunning, original quarry tiles in the hallway. The spacious accommodation comprises of three reception rooms, living room and dining rooms are extremely spacious along with a sunny breakfast room leading to the fitted kitchen with utility room. Upstairs hosts three double bedrooms and a fourth bedroom/study/dressing room and family bathroom. Access to large attic room with great potential to extend housing a bedroom and ensuite. In addition to this unique home is a beautiful, long garden leading to a garage and rear access.





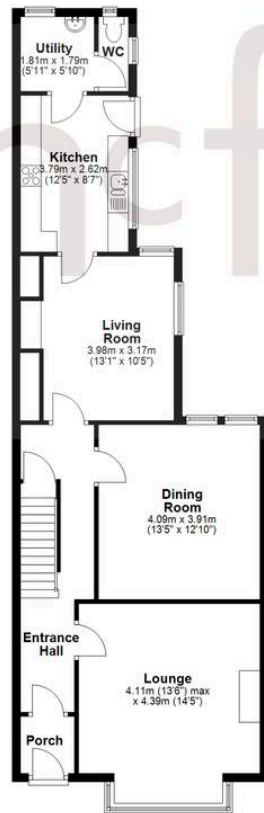
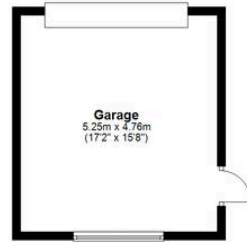
97 Goddard Avenue

Swindon, SN1

Located on the highly sought-after Goddard Avenue in Swindon's desirable Old Town, this property enjoys a prime position close to a wide range of local amenities. Just a short stroll away, you'll find an array of pubs, restaurants, and supermarkets. The town center is easily accessible, while Junctions 15 and 16 of the M4 are within convenient reach, making this an ideal spot for commuters. Swindon serves as a key commercial hub in the Southwest, offering an extensive range of services and amenities, including frequent train services to nearby cities.



Ground Floor
Approx. 105.2 sq. metres (1131.9 sq. feet)



First Floor
Approx. 64.6 sq. metres (695.6 sq. feet)



Total area: approx. 169.8 sq. metres (1827.5 sq. feet)

McFarlane Sales & Lettings

McFarlane Sales & Letting Ltd, 28-30 Wood Street – SN1 4AB

01793 296880 • oldtown@mcfarlaneproperty.com • www.mcfarlaneproperty.com/

mcfarlane
property.com