



2 The Beanlands, Wanborough

Swindon

£525,000

mcfarlan
property.co.uk

2 The Beanlands

Wanborough, Swindon

Beautifully presented four bedroom detached home in sought-after Wanborough. Features include spacious living areas, open-plan kitchen, en-suite to master, utility room, integrated garage, and a generous garden. Ideally located near A419 & M4—perfect for families and commuters.

Council Tax band: E

Tenure: Freehold





2 The Beanlands

Wanborough, Swindon

Located in a sought after residential development in Wanborough, this beautifully presented four bedroom detached property offers generous living space, ideal for family life. The ground floor comprises a welcoming entrance hall with under stairs storage, a downstairs cloakroom, a bright dining room, and a spacious living room with a bay window and French doors leading to the well maintained rear garden. The open plan kitchen includes space for dining, a separate utility room, and further French doors to the garden perfect for indoor-outdoor living. Upstairs, the property offers four bedrooms, all with built in storage. The master bedroom benefits from an en-suite shower room, while a functional family bathroom serves the remaining rooms. The property also benefits from an integrated garage with internal access, driveway parking, and a well tended, spacious rear garden. It is ideally positioned with excellent access to the A419 and M4 (Junction 15), making it perfect for commuters and families alike. This impressive home combines village charm with great transport links, early viewing is highly recommended.



2 The Beanlands

Wanborough, Swindon

Council Tax band: E

Tenure: Freehold

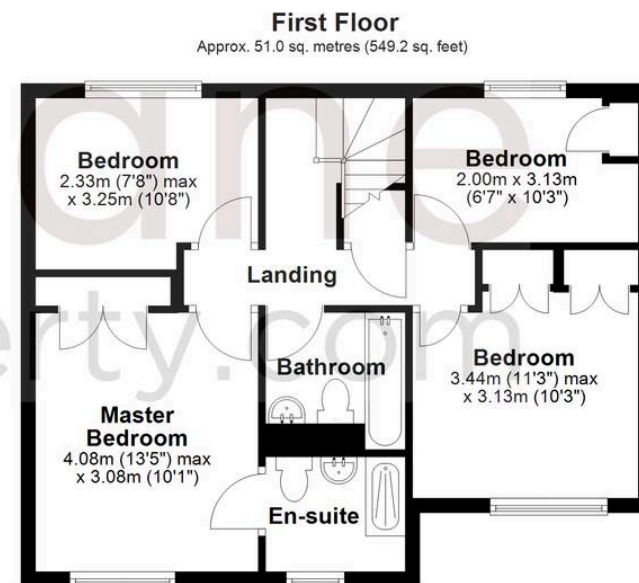
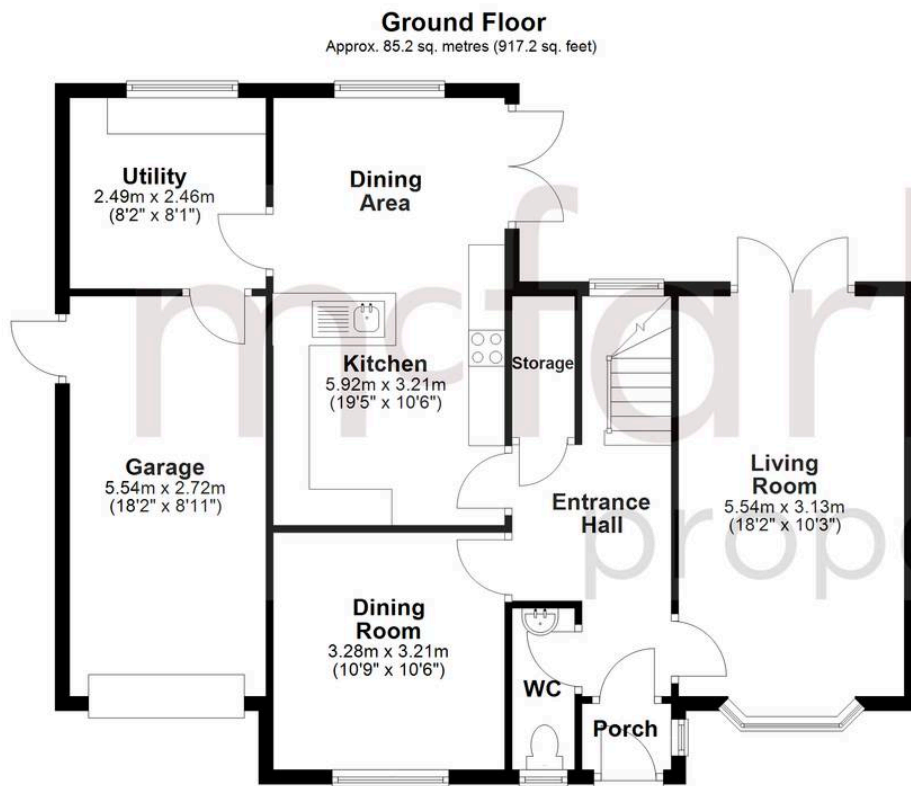
- FOUR BEDROOMS
- DETACHED PROPERTY
- GARAGE & DRIVEWAY
- EN-SUITE TO MASTER
- WANBOROUGH VILLAGE
- BEAUTIFUL REAR GARDEN



2 The Beanlands

Wanborough, Swindon





Total area: approx. 136.2 sq. metres (1466.4 sq. feet)

McFarlane Sales & Lettings

McFarlane Sales & Letting Ltd, 28-30 Wood Street – SN1 4AB

01793 296880 • oldtown@mcfarlaneproperty.com • www.mcfarlaneproperty.com/

mcfarlane
property.com