



12 Naunton Road, Swindon

Swindon

£189,500

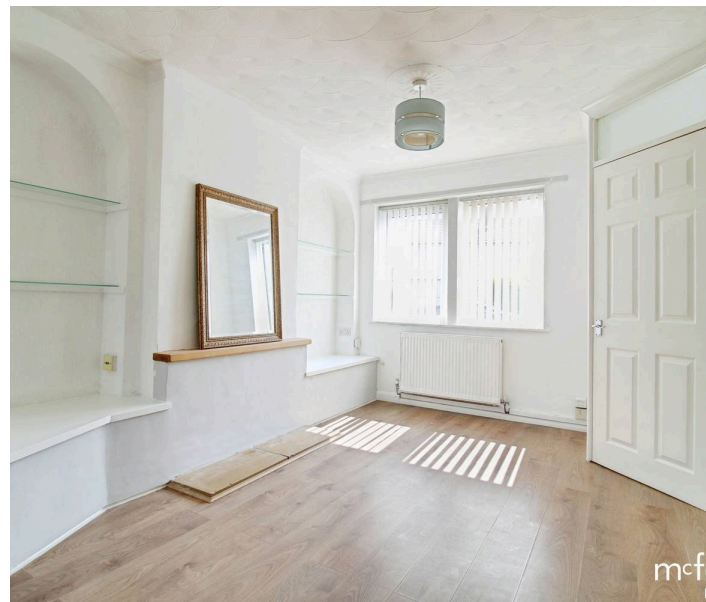
mcfarlane

12 Naunton Road

Swindon, SN3

McFarlane Sales & Lettings are delighted to present this beautifully refurbished and generously proportioned mid terrace family home, ideally situated in the popular area of Walcot. Conveniently located within close proximity to local shops, reputable schools, and a range of everyday amenities, this spacious property is perfectly suited to modern family living. The accommodation briefly comprises a welcoming entrance hallway, a large open plan living and dining room, a contemporary kitchen, and a separate utility room offering excellent additional storage and functionality. Upstairs, you'll find three well proportioned bedrooms and a family bathroom. Further benefits include an enclosed rear garden ideal for outdoor enjoyment, off road parking for two to three vehicles, and efficient gas central heating throughout. This is a wonderful opportunity to acquire a move in ready home in a popular location early viewing is highly recommended.

The property is unity construction.





12 Naunton Road

Swindon, SN3

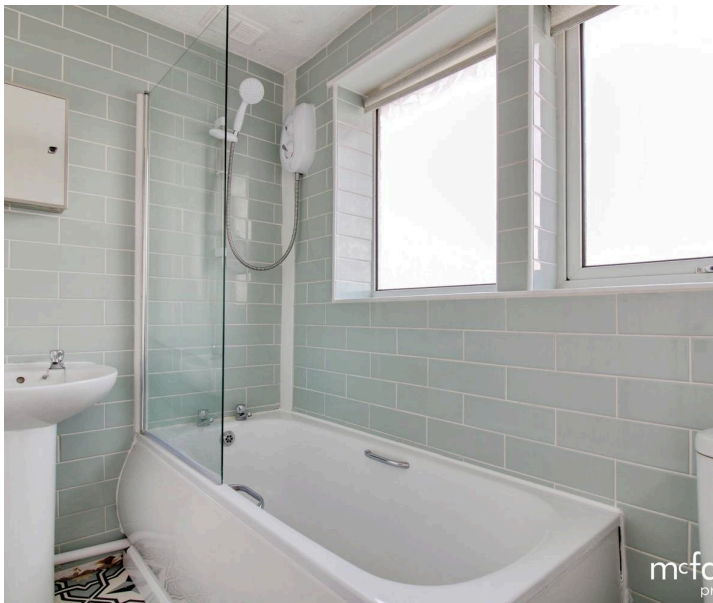
McFarlane Sales & Lettings are delighted to offer this refurbished 3 bedroom mid-terrace home in Walcot. Features include a spacious lounge/diner, modern kitchen, utility, family bathroom, enclosed garden, off road parking & gas central heating. Close to shops, schools & amenities. Council Tax band: A

Tenure: Freehold

EPC Energy Efficiency Rating: C

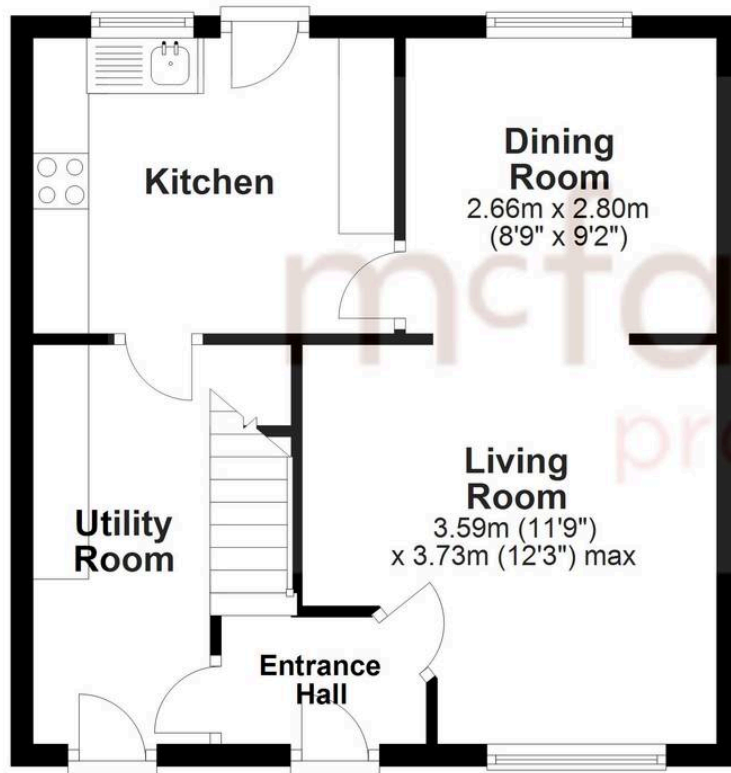
EPC Environmental Impact Rating: D

- NO CHAIN
- WELL PRESENTED
- THREE BEDROOMS
- OPEN PLAN KITCHEN & DINER
- DRIVEWAY PARKING
- POPULAR LOCATION
- UNITY CONSTRUCTION



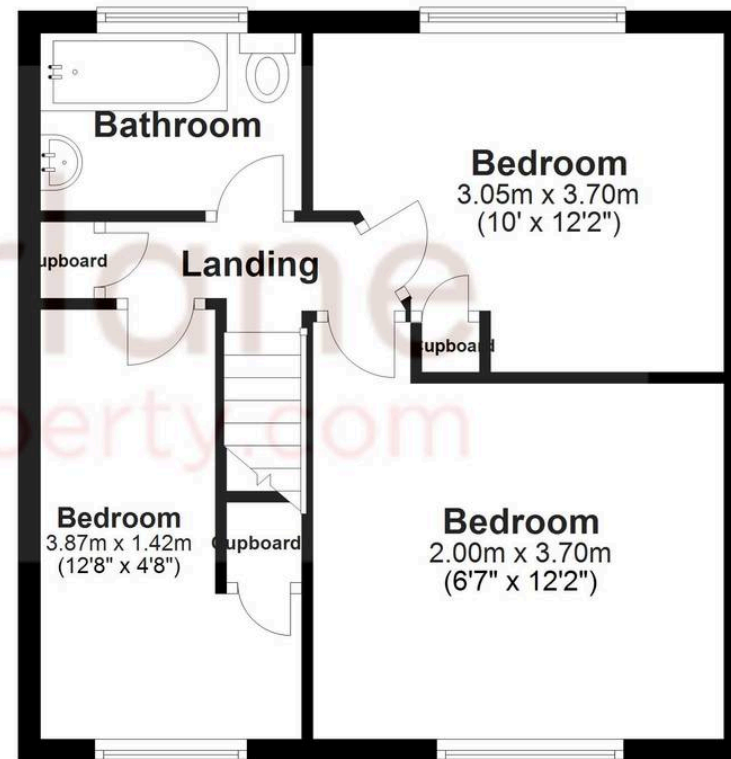
Ground Floor

Approx. 39.1 sq. metres (420.8 sq. feet)



First Floor

Approx. 38.7 sq. metres (416.4 sq. feet)



Total area: approx. 77.8 sq. metres (837.2 sq. feet)

McFarlane Sales & Lettings

McFarlane Sales & Letting Ltd, 28-30 Wood Street – SN1 4AB

01793 296880 • oldtown@mcfarlaneproperty.com • www.mcfarlaneproperty.com/

mcfarlane
property.com