



28 Ashford Road, Swindon

Swindon

£315,000

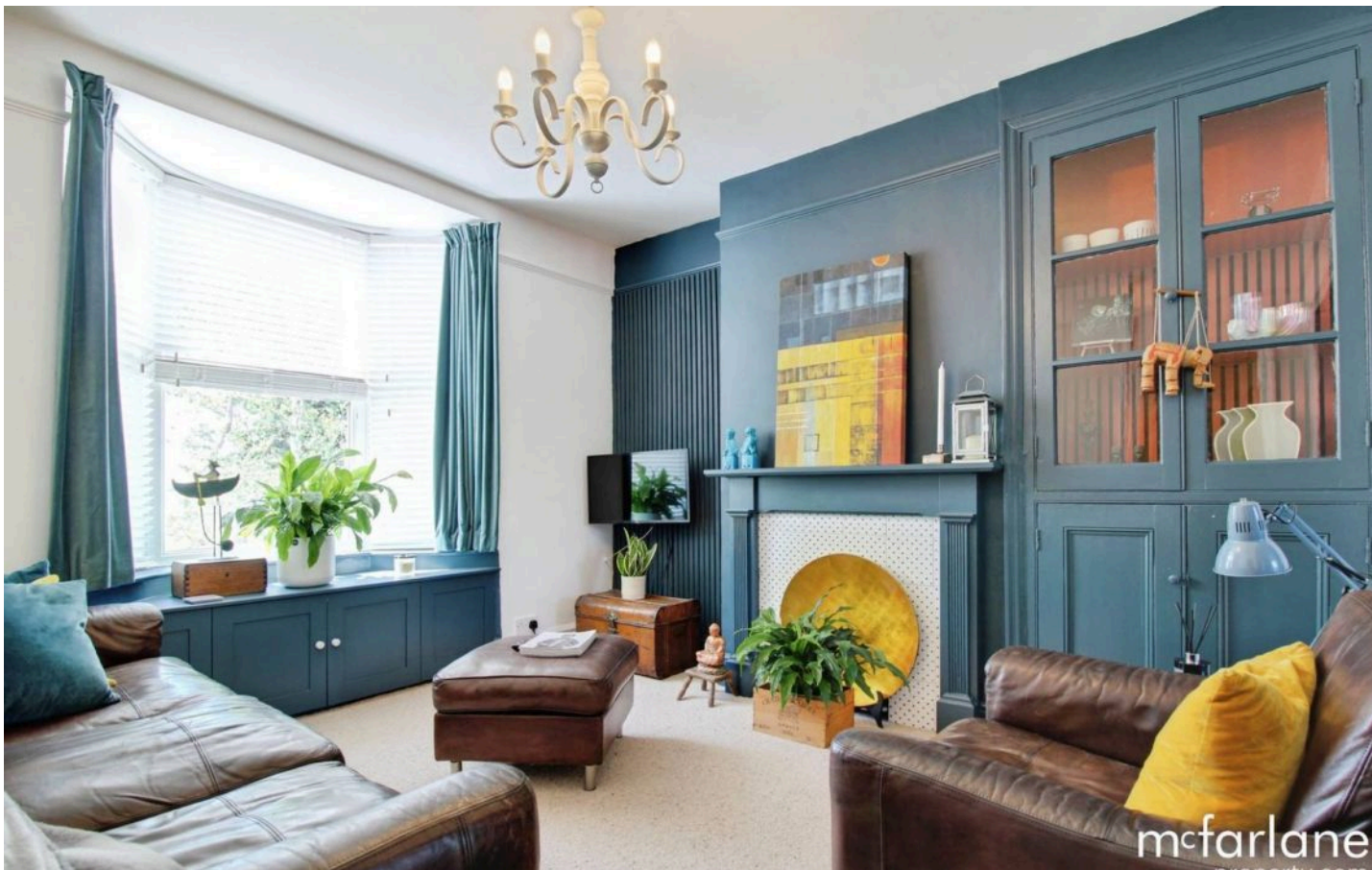
mcfarlane

28 Ashford Road

Swindon, SN1

Introducing to market this beautiful characterful home, perfectly positioned on the sought after Ashford Road in Old Town. This beautiful home seamlessly blends charm with modern finishes, offering stylish, comfortable living across two well appointed floors. Tastefully updated throughout while thoughtfully preserving its original character, this home boasts a welcoming entrance porch and a character filled hallway that sets the tone for the rest of the property. The sitting room provides a cosy yet refined space to relax, while the ground floor also includes a convenient cloak room and an extended kitchen and dining room. Access from the kitchen opens onto a well tended, private rear garden with views across Swindon. Upstairs, the home offers three generously sized bedrooms and a modern family bathroom. Each room is well proportioned and filled with natural light, adding to the airy and spacious feel throughout the home. Parking is available on-street with a resident's permit. With close proximity to Old Towns Wood Street, the property is surrounded by close by shops, cafes, restaurants and schools. This Home is a true standout and would make a fantastic family home.





28 Ashford Road

Swindon, SN1

Introducing this charming character home on sought-after Ashford Road in Old Town. Beautifully updated throughout, it features three spacious bedrooms, an extended kitchen/diner, private garden with views, and original period features all just moments from schools, shops, and cafes. Council Tax band: C

Tenure: Freehold

EPC Energy Efficiency Rating: C

EPC Environmental Impact Rating: C



28 Ashford Road

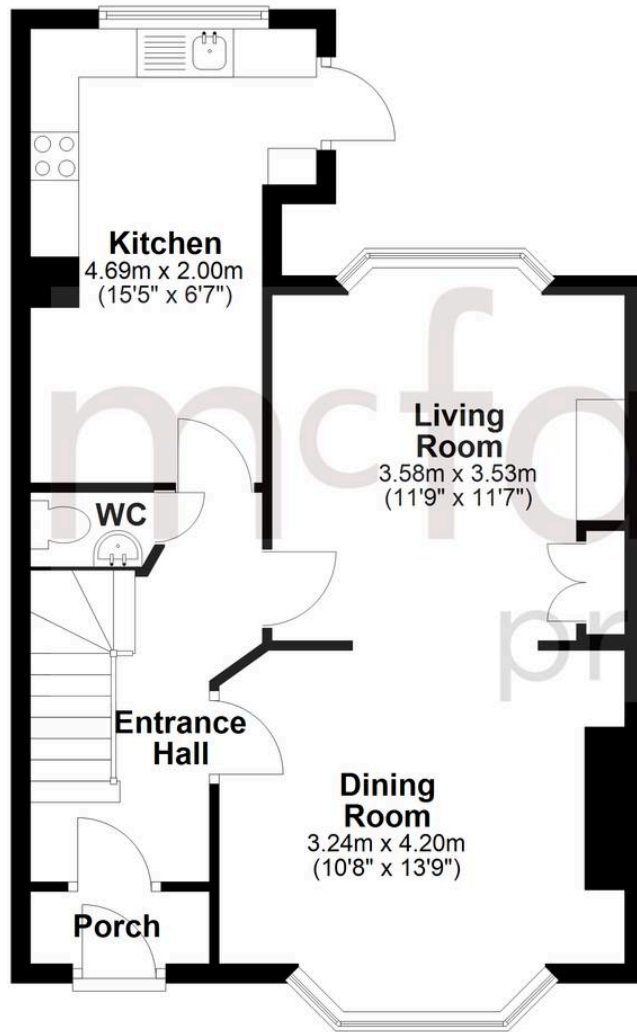
Swindon, SN1

- CHARACTER PROPERTY
- OLD TOWN LOCATION
- WELL TENDED REAR GARDEN
- THREE BEDROOMS
- TASTEFULLY DECORATED
- SPACIOUS LIVING ACCOMODATION



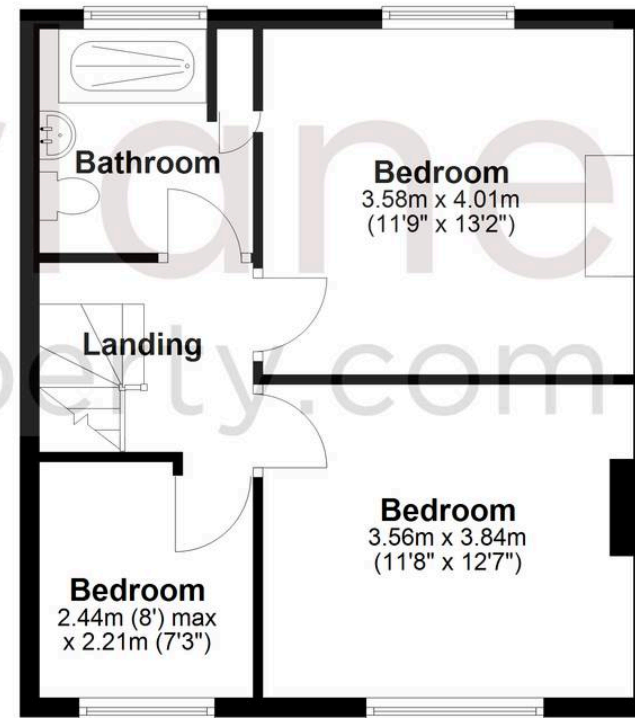
Ground Floor

Approx. 50.2 sq. metres (540.5 sq. feet)



First Floor

Approx. 44.4 sq. metres (477.6 sq. feet)



Total area: approx. 94.6 sq. metres (1018.1 sq. feet)

McFarlane Sales & Lettings

McFarlane Sales & Letting Ltd, 28-30 Wood Street – SN1 4AB

01793 296880 • oldtown@mcfarlaneproperty.com • www.mcfarlaneproperty.com/

mcfarlane
property.com