



30 Mill Court Old Mill Lane, Swindon

Swindon

£250,000

mcFarlan
property.co

30 Mill Court Old Mill Lane

Swindon, SN3

Located within the highly desirable Mill Court development in Old Town, this beautifully presented two-bedroom first floor apartment offers views of the lawns and the charming surroundings of Old Town. With no chain involved, the property boasts an enviable location with local shops, doctors' surgeries, and eateries all within close proximity. Inside, the apartment features an entrance hall, a spacious bathroom with a shower over the bath, and two generously sized double bedrooms. The master bedroom benefits from built-in storage and a private ensuite. The living room, accessed via double doors, boasts a Juliet balcony that fills the space with natural light, while the well-appointed kitchen is complete with integrated appliances. The property further benefits from an allocated parking space, both stairs and a lift in the communal area and gas central heating.

Council Tax band: D

Tenure: Leasehold: 977 Years Remaining

Service Charge: £1,975.98

Ground Rent: £tbc





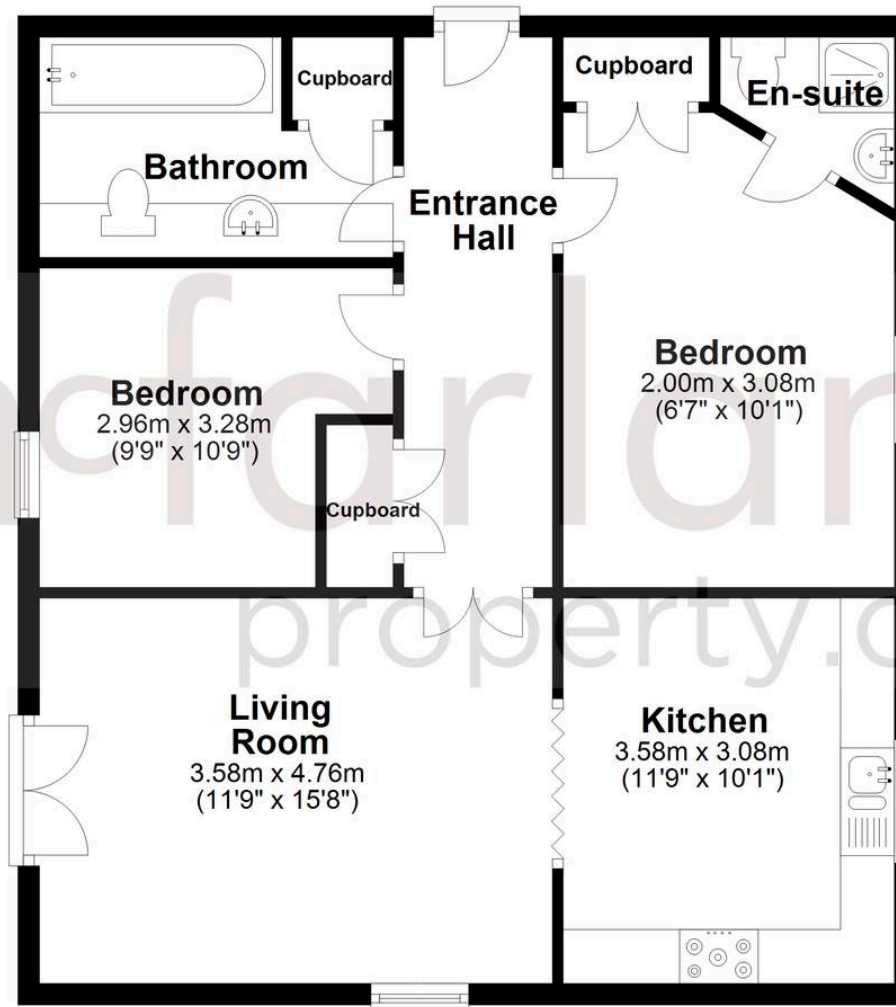
30 Mill Court Old Mill Lane Swindon, SN3

Set in the sought-after Mill Court development, this stylish two-bedroom first-floor apartment offers views of The Lawns and Old Town. With no chain, it boasts a bright living room with a Juliet balcony, a modern kitchen with integrated appliances, two double bedrooms, an ensuite, bathroom and parking.



- GATED DEVELOPMENT
- TWO DOUBLE BEDROOMS
- NO CHAIN
- ALLOCATED PARKING
- DESIRABLE LOCATION
- FIRST FLOOR

Ground Floor



Total area: approx. 69.7 sq. metres (750.7 sq. feet)

McFarlane Sales & Lettings

McFarlane Sales & Letting Ltd, 28-30 Wood Street – SN1 4AB

01793 296880 • oldtown@mcfarlaneproperty.com • www.mcfarlaneproperty.com/

mcfarlane
property.com