



32 Mill Court Old Mill Lane, Swindon

Swindon

£275,000

nsforlane

32 Mill Court Old Mill Lane

Swindon, SN3

Located within the sought after Mill Court development in Swindon's Old Town, this well presented second floor apartment offers functional and convenient living. The property features a spacious entrance hall leading into a bright and generously sized open-plan living and dining area, seamlessly flowing into a modern, fully fitted kitchen. The master bedroom benefits from built-in storage cupboards and a spacious en suite shower room, while a second bedroom and separate bathroom complete the accommodation. Additional highlights include uPVC double glazing, gas radiator heating, lift and stair access, an allocated parking space plus ample visitor parking. The communal areas are always immaculately maintained, and the apartment is ideally positioned close to local schools, shops, doctors, cafes, and restaurants, perfect for modern living in a desirable location.





32 Mill Court Old Mill Lane Swindon, SN3

Situated in the sought-after Mill Court in Old Town Swindon, this spacious two bed, two bath second floor apartment offers open-plan living, a modern kitchen, en suite to master, allocated parking, lift access, and is close to shops, schools, and cafes ideal for convenient, modern living. Council Tax band: D

Tenure: Leasehold

EPC Energy Efficiency Rating: C

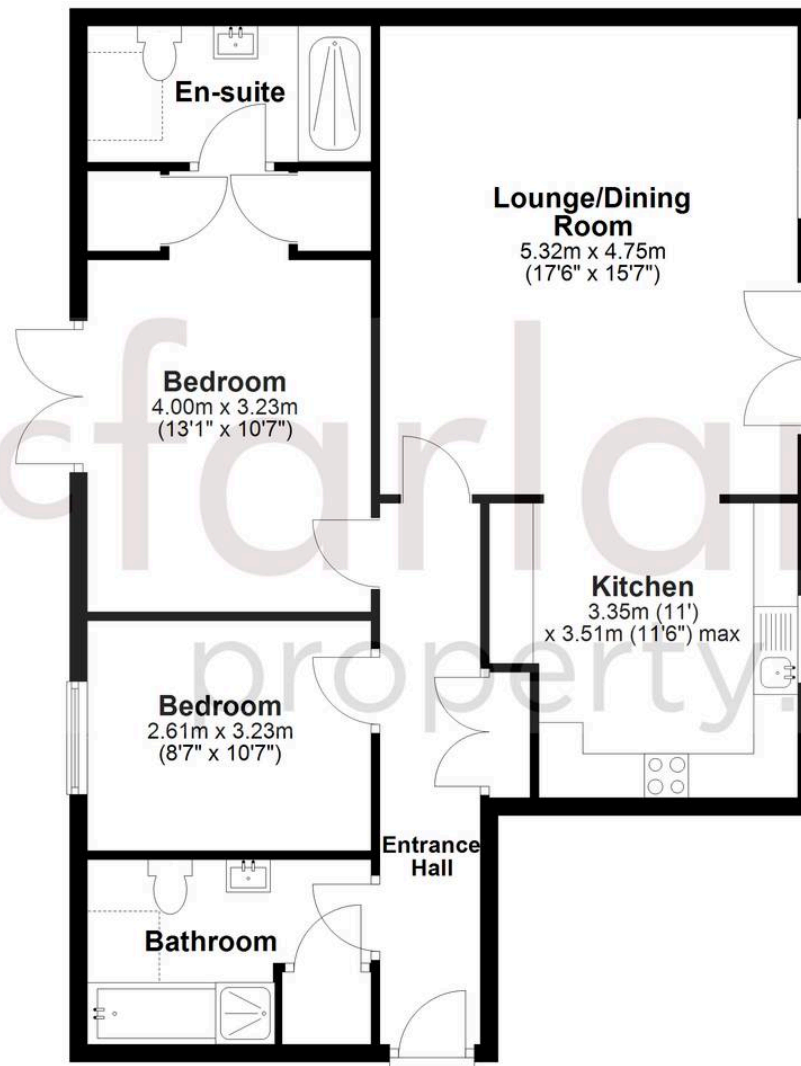
EPC Environmental Impact Rating: C



- TWO DOUBLE BEDROOMS
- SECOND FLOOR APARTMENT
- ALLOCATED PARKING
- OLD TOWN LOCATION
- BEAUTIFULLY PRESENTED

Second Floor

Approx. 83.3 sq. metres (896.9 sq. feet)



Total area: approx. 83.3 sq. metres (896.9 sq. feet)

McFarlane Sales & Lettings

McFarlane Sales & Letting Ltd, 28-30 Wood Street – SN1 4AB

01793 296880 • oldtown@mcfarlaneproperty.com • www.mcfarlaneproperty.com/

mcfarlane
property.com