



Plot 5, Townsend Road
Shrivenham

£270,000



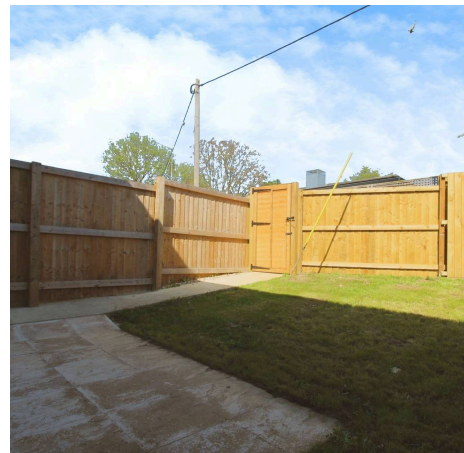
Plot 5, Townsend Road

Shrivenham

2 Bedroom Mid-Terraced House available in a new small development of 10 properties, promising a contemporary living experience. Situated in the highly desirable location of Shrivenham, this new home is ready to move into, offering convenience and style in one package. Boasting a large family/kitchen/dining room, perfect for entertaining guests or relaxing with family, this home provides a comfortable living environment. The property features an en suite to bedroom 1, ideal for added privacy and convenience, along with two double bedrooms ensuring ample space for residents. Positioned as a mid-terrace unit, residents will appreciate the sense of community while still enjoying privacy. This property also comes with the added benefit of two allocated parking spaces, making daily activities effortless and stress-free.

Step outside and discover the outdoor space that comes with this property, enhancing the overall living experience.

The exterior of the property provides a peaceful retreat, allowing residents to enjoy moments of relaxation while soaking up the fresh air. Whether sipping morning coffee on the patio or hosting a summer barbeque in the garden, the outside space offers versatility for various activities.



- NEW HOME READY TO MOVE INTO
- SMALL DEVELOPMENT OF 10 PROPERTIES
- HIGHLY DESIRABLE SHRIVENHAM LOCATION
- LARGE FAMILY / KITCHEN / DINING ROOM
- EN SUITE TO BEDROOM 1
- TWO DOUBLE BEDROOMS
- MID TERRACE
- TWO ALLOCATED PARKING SPACES

Open Plan Living

26' 8" x 12' 5" (8.12m x 3.78m)

WC**Landing****Bedroom 1**

14' 6" x 12' 5" (4.41m x 3.78m)

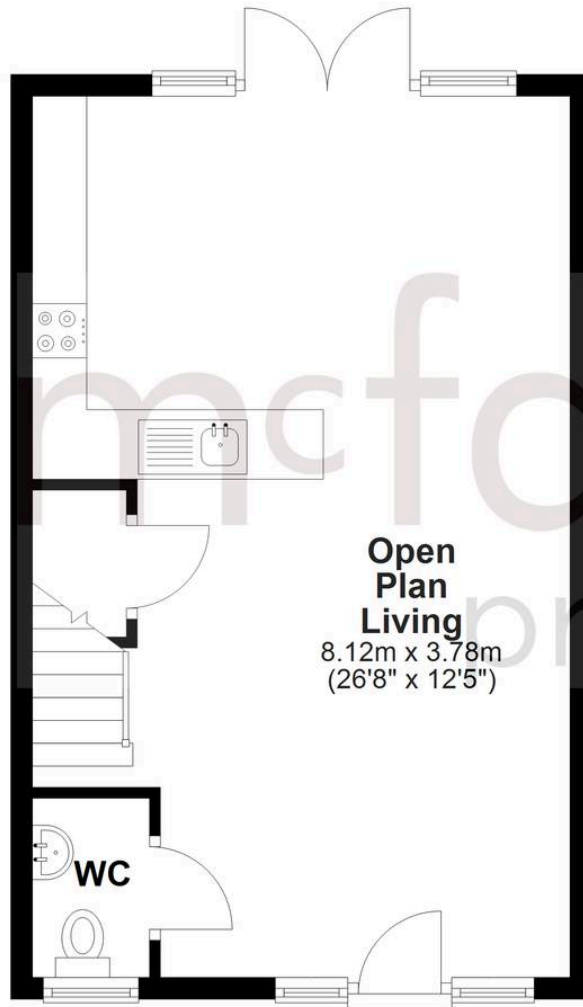
En-suite**Bedroom 2**

13' 5" x 8' 11" (4.10m x 2.71m)

Bathroom

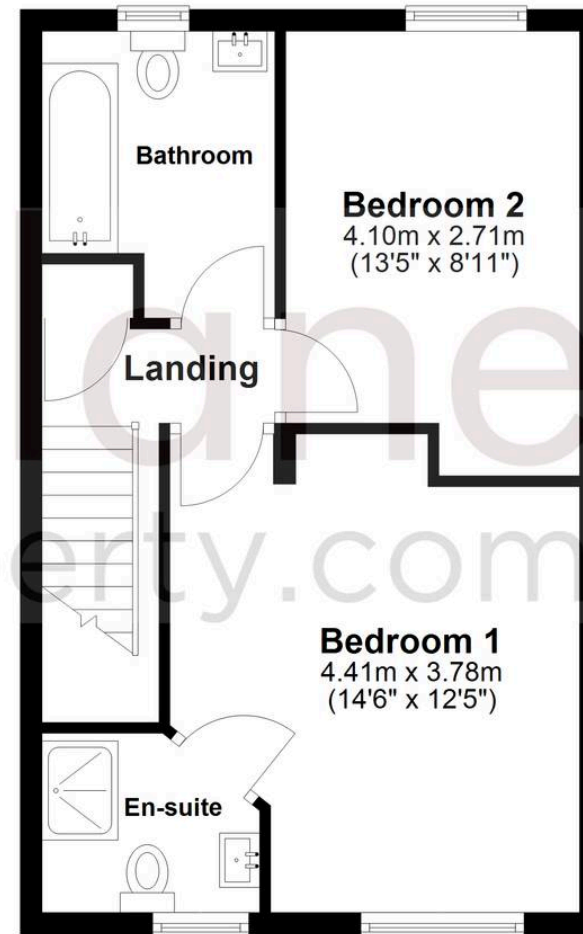
Ground Floor

Approx. 40.3 sq. metres (433.3 sq. feet)



First Floor

Approx. 40.3 sq. metres (433.3 sq. feet)



Total area: approx. 80.5 sq. metres (866.5 sq. feet)

McFarlane Sales & Lettings

McFarlane Sales & Letting Ltd, 28-30 Wood Street – SN1 4AB

01793 296880 • oldtown@mcfarlaneproperty.com • www.mcfarlaneproperty.com/