



10 Homington Terrace, Swindon

Swindon

£460,000

# 10 Homington Terrace

Swindon, SN3

Council Tax band: B

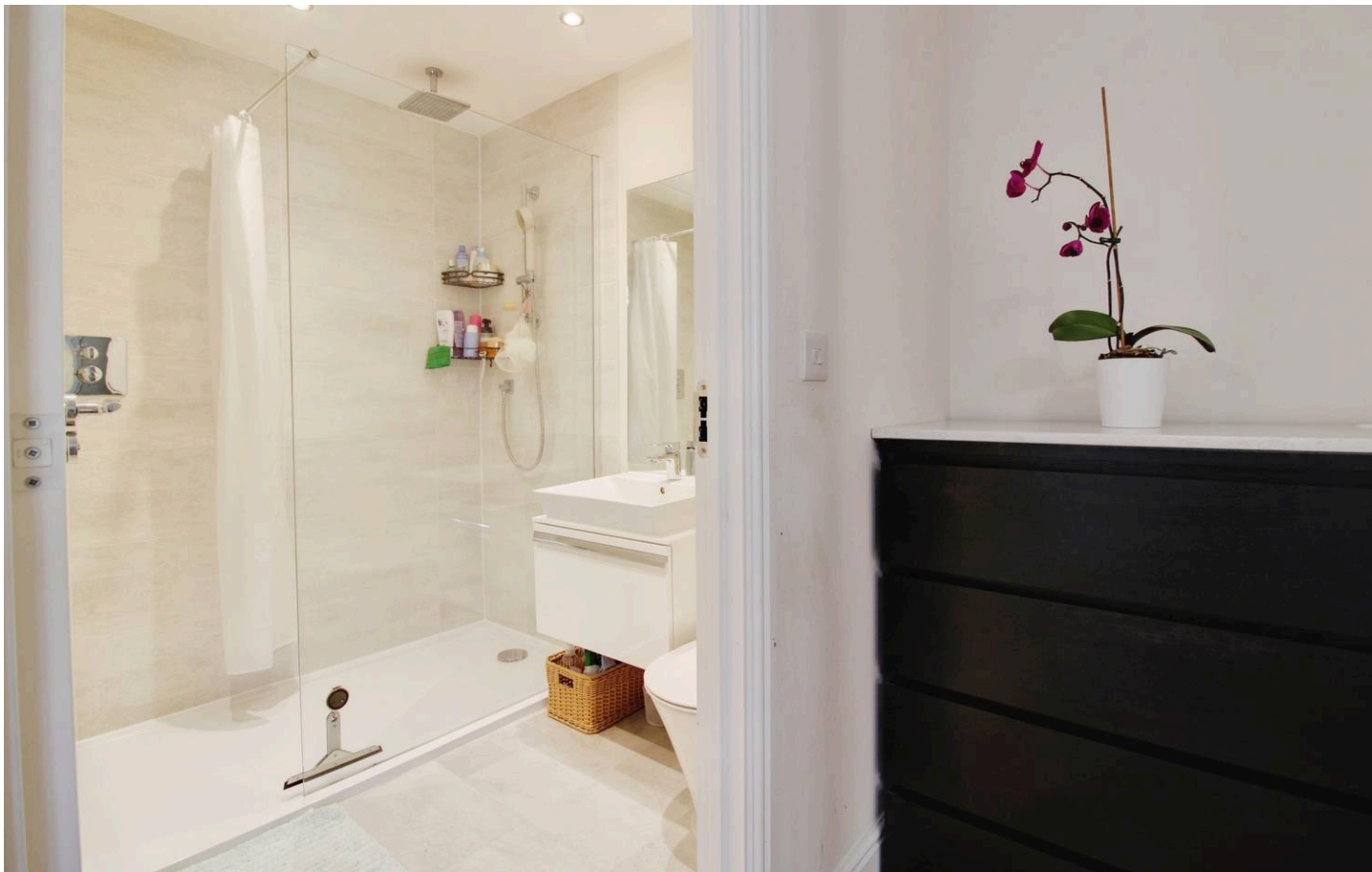
Tenure: Freehold

EPC Energy Efficiency Rating: B

EPC Environmental Impact Rating: B

- IMMACULATELY PRESENTED
- END OF TERRACE
- SOUGHT AFTER AREA
- ACCOMMODATION OVER THREE FLOORS
- FOUR BEDROOMS
- GARAGE AND PARKING





## 10 Homington Terrace

Swindon, SN3

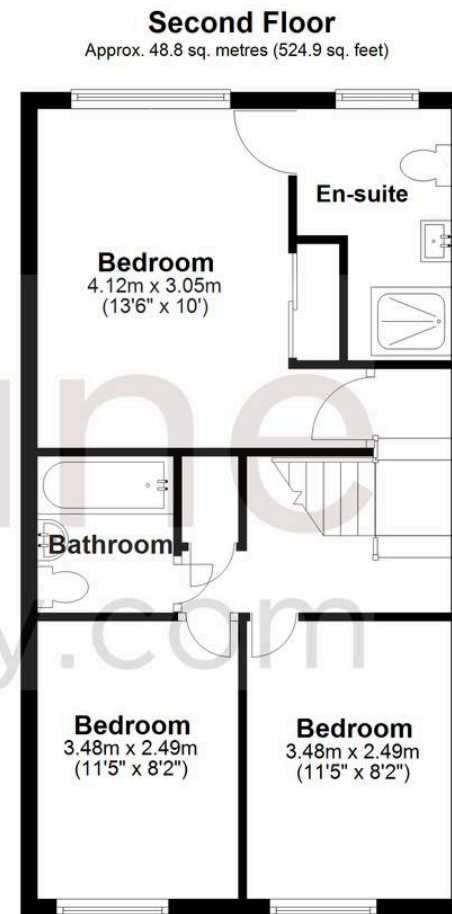
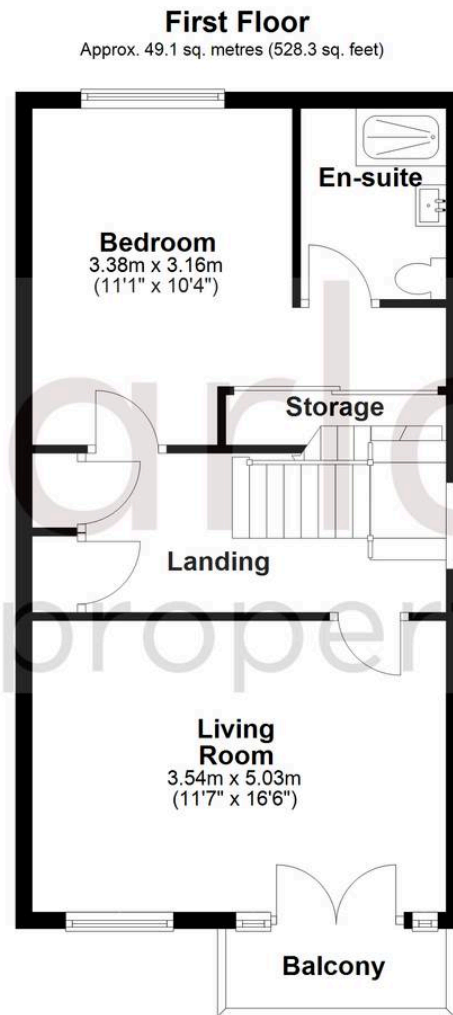
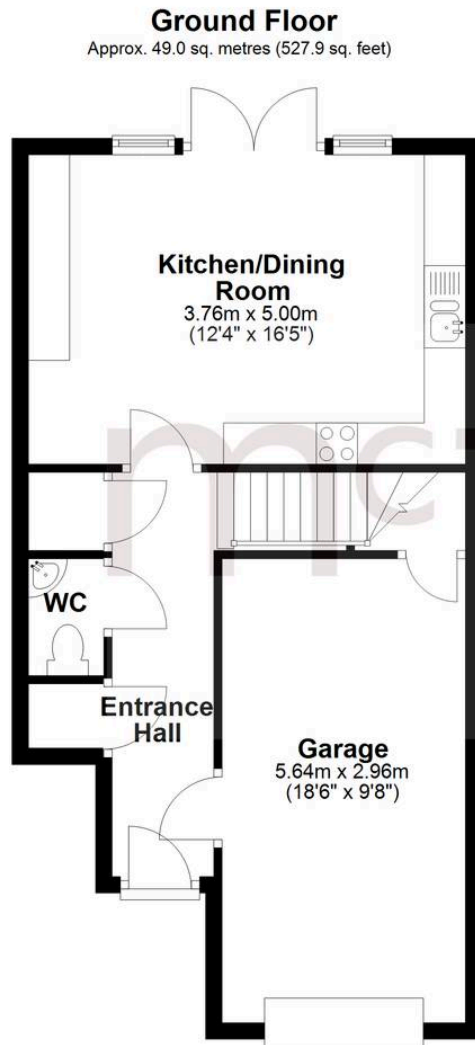
A beautifully presented and fantastically generous home with accommodation arranged over three floors. To the ground floor there is a spacious kitchen/ dining room with modern fitted appliances, a useful cloakroom with WC and access to the integral garage with power and lighting, ideal as a gym area.

To the first floor you can find the spacious sitting room with balcony and the master bedroom with en-suite shower room.

To the second floor a further three bedrooms can be found (one of which benefits from an en-suite) as well as a three-piece family bathroom.

Externally the property has a low maintenance fully enclosed garden, driveway and side access as well as an Electric Vehicle charging point.





Total area: approx. 146.9 sq. metres (1581.1 sq. feet)

## McFarlane Sales & Lettings

McFarlane Sales & Letting Ltd, 28-30 Wood Street – SN1 4AB

01793 296880 • oldtown@mcfarlaneproperty.com • www.mcfarlaneproperty.com/

mcfarlane  
property.com