



44 Godwin Court, Swindon

Swindon

£145,000

mortgage

## 44 Godwin Court

Old Town, Swindon

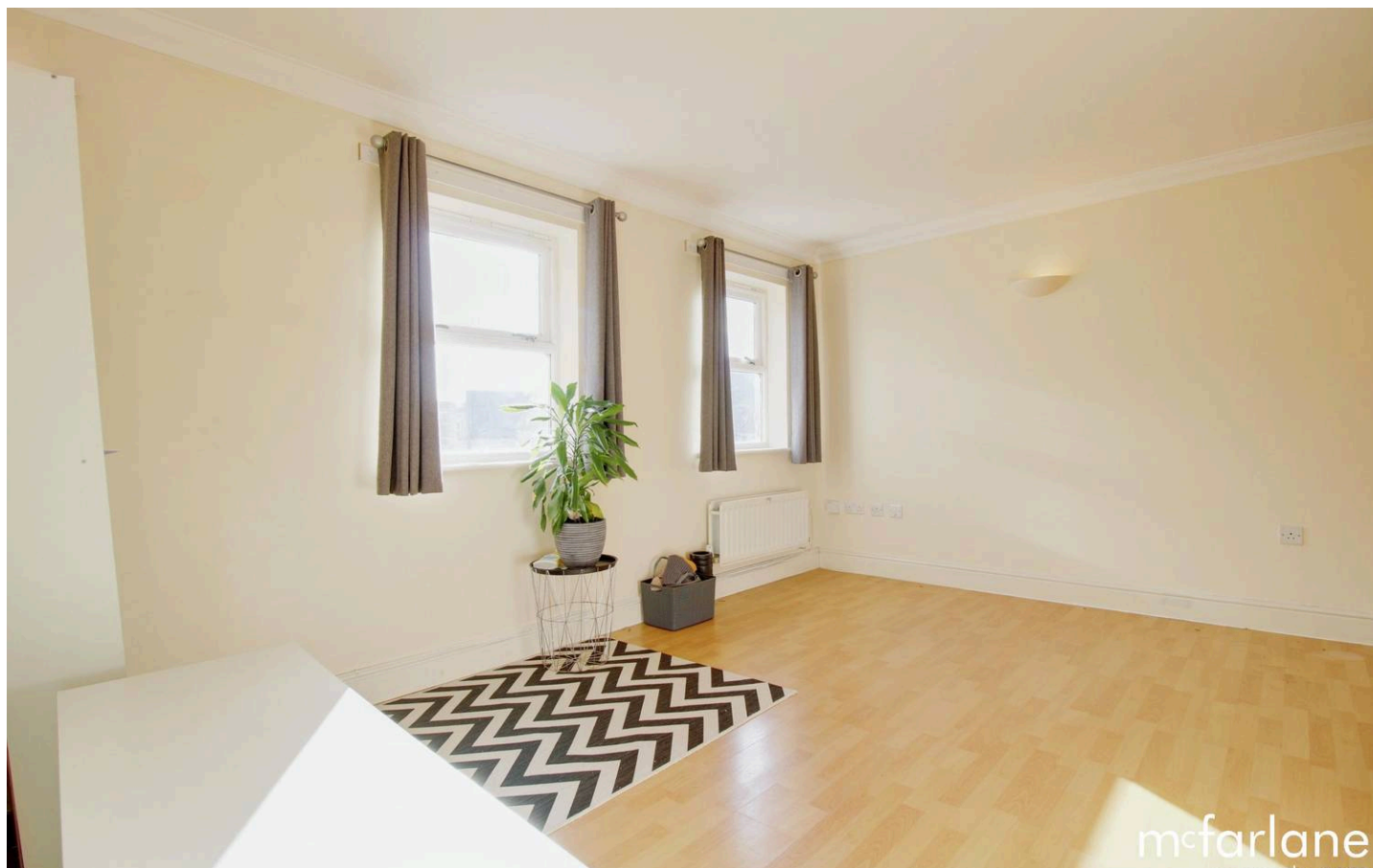
McFarlane Sales & Lettings proudly present this spacious second-floor apartment in the heart of Old Town. It features a bright open-plan living area with a modern kitchen, two double bedrooms, and a family bathroom. Benefits include gas central heating, secure entry, and allocated parking, all just steps from shops and cafes.

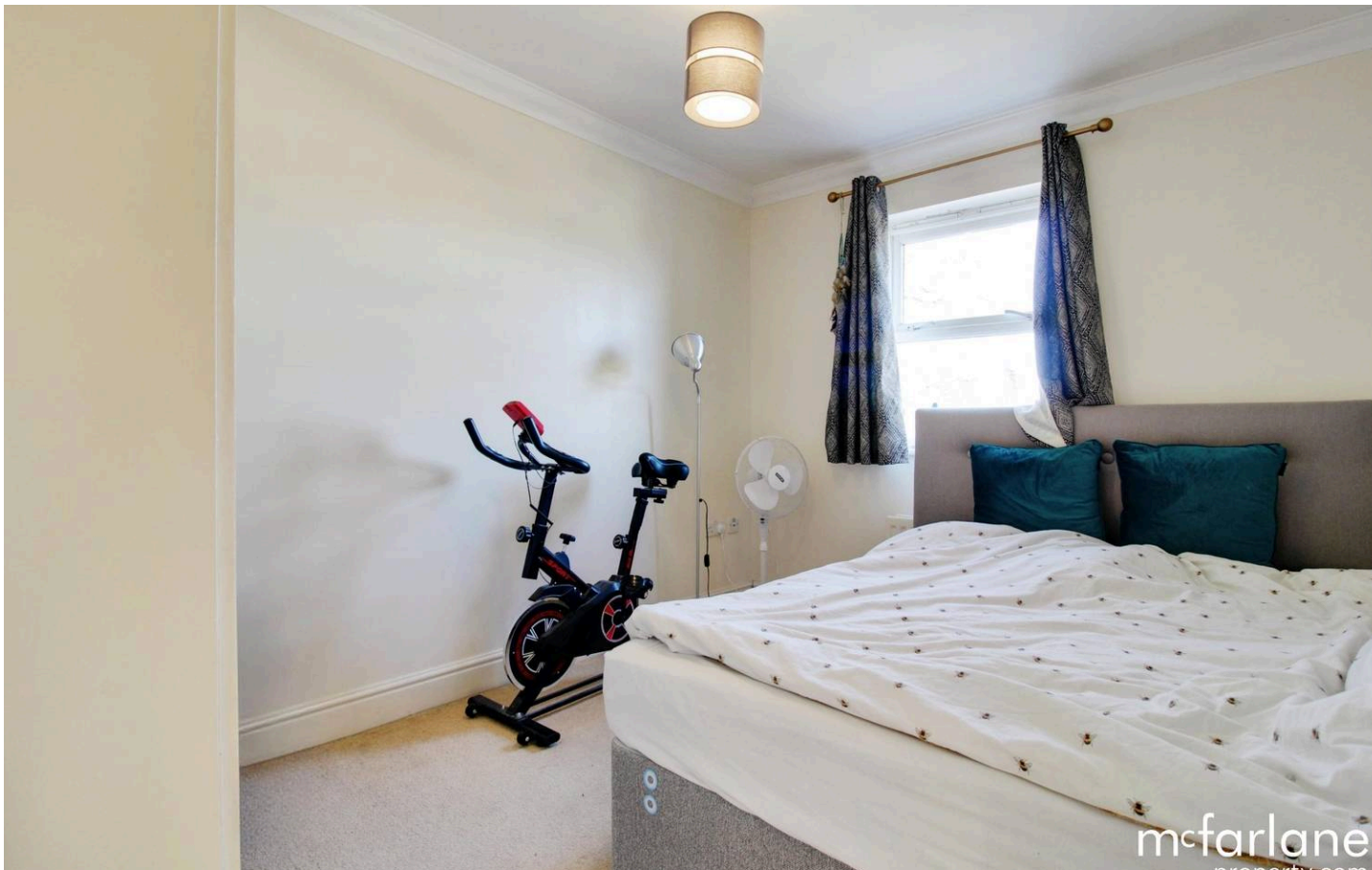
Council Tax band: C

Tenure: Leasehold

EPC Energy Efficiency Rating: C

EPC Environmental Impact Rating: C

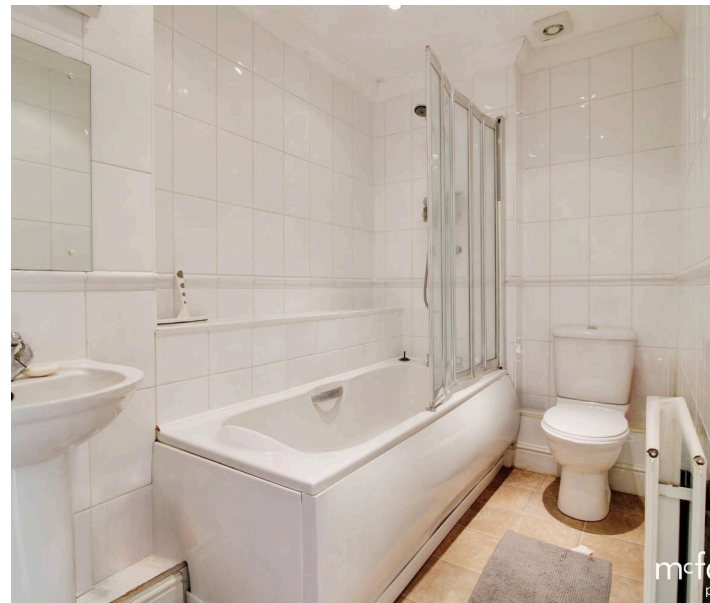




## 44 Godwin Court

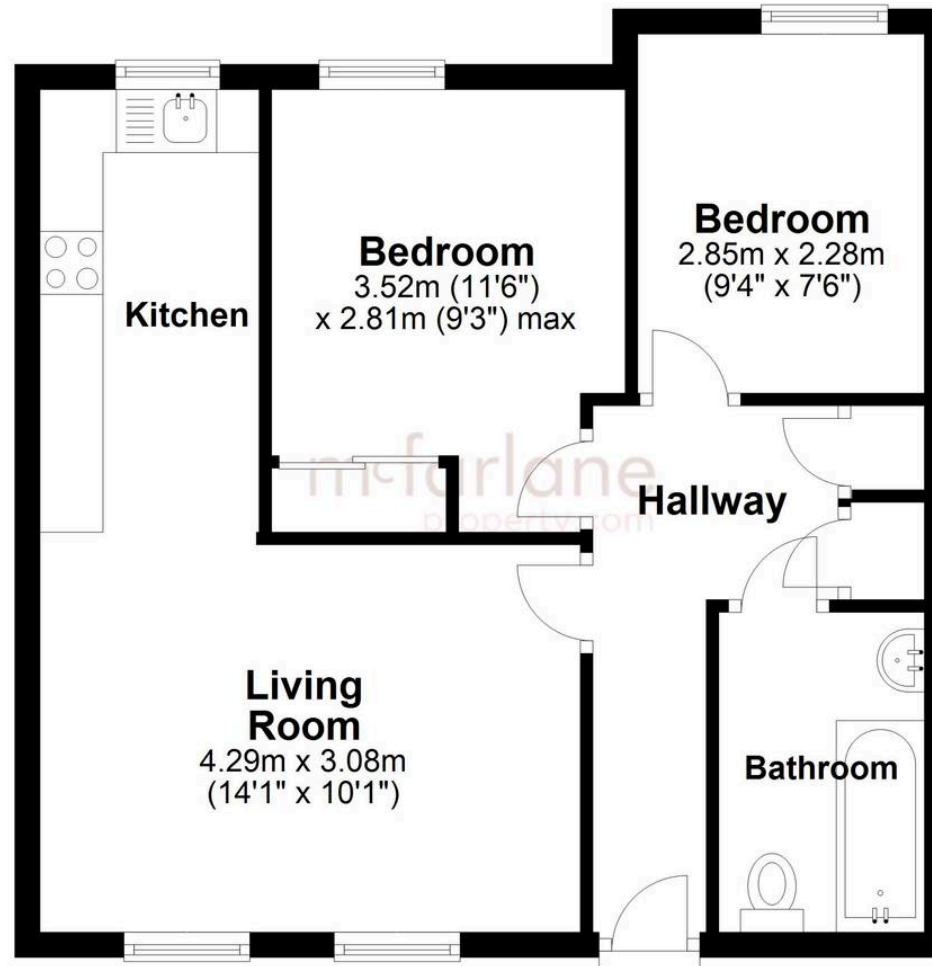
Old Town, Swindon

- SECOND FLOOR APARTMENT
- OPEN PLAN LIVING ACCOMODATION
- OLD TOWN LOCATION
- ALLOCATED PARKING
- NO ONWARD CHAIN
- GAS CENTRAL HEATING



## Second Floor

Approx. 48.0 sq. metres (516.7 sq. feet)



Total area: approx. 48.0 sq. metres (516.7 sq. feet)

## McFarlane Sales & Lettings

McFarlane Sales & Letting Ltd, 28-30 Wood Street - SN1 4AB

01793 611841 • [lettings@mcfarlaneproperty.com](mailto:lettings@mcfarlaneproperty.com) • [www.mcfarlaneproperty.com/](http://www.mcfarlaneproperty.com/)

mcfarlane  
property.com