



9 Ashbury Avenue, Swindon

Swindon

£295,000

mcFarlane
property.co.uk

9 Ashbury Avenue

Nythe, Swindon

Offered to market with no onward chain is this ideal family home, in the popular Nythe location, sitting on a generous corner plot.

Council Tax band: C

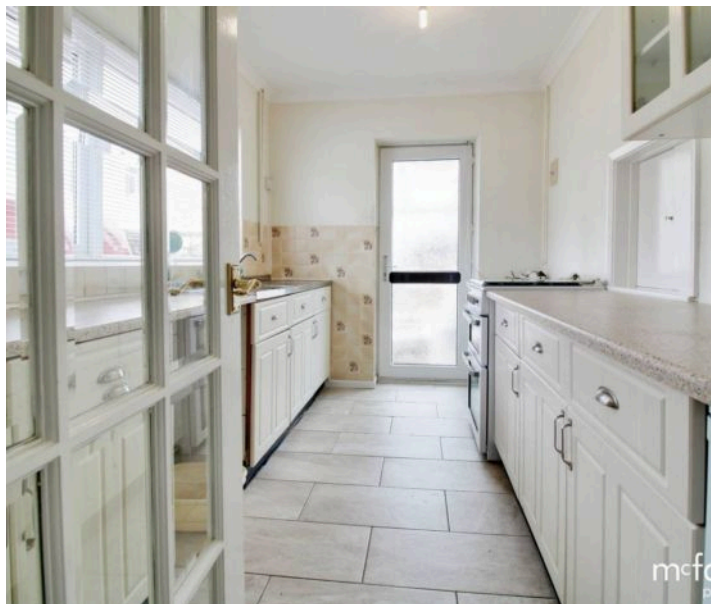
Tenure: Freehold



9 Ashbury Avenue

Nythe, Swindon

- NO ONWARD CHAIN
- GENEROUS PLOT
- DESIRABLE LOCATION
- THREE BEDROOMS
- FULLY ENCLOSED GARDEN AND AMPLE PARKING
- GENEROUS SITTING ROOM



9 Ashbury Avenue

Swindon, Swindon

A delightfully spacious property located in the popular Nythe area with the added benefit of No Onward Chain. To the ground floor there is a welcoming entrance hall, spacious sitting room/ dining room, fitted kitchen and a lean-to with access to the garden. To the first floor there are two double bedrooms, a single bedroom and the family bathroom with three piece suite comprising bath with shower over, basin and WC.

The property sits on a generous corner plot benefitting from ample driveway parking and rear access to the fully enclosed garden.



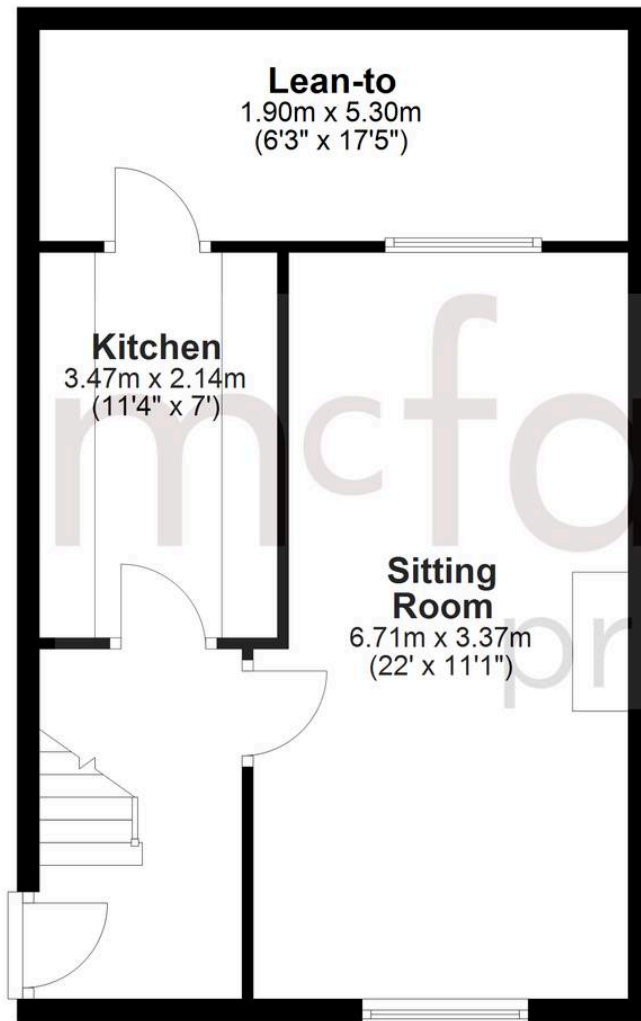
9 Ashbury Avenue

Nythe, Swindon



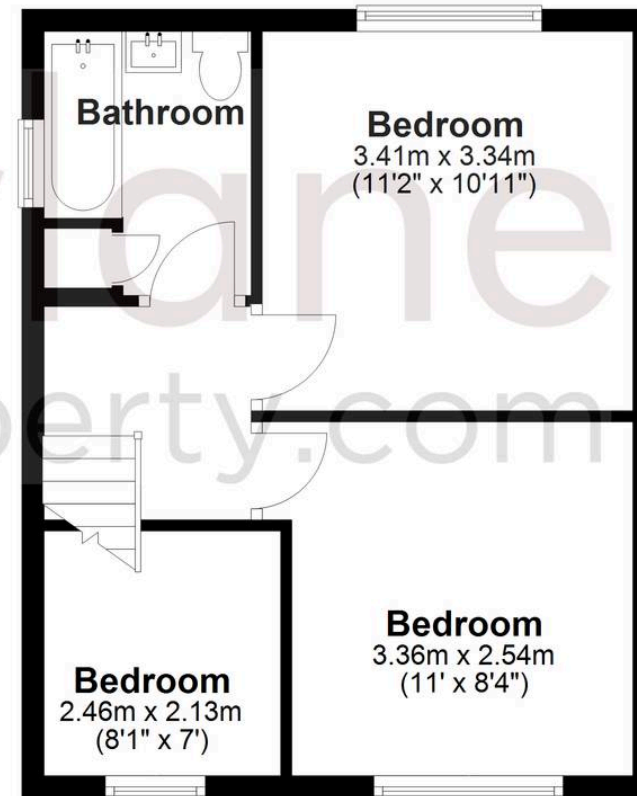
Ground Floor

Approx. 46.2 sq. metres (497.2 sq. feet)



First Floor

Approx. 37.0 sq. metres (398.5 sq. feet)



Total area: approx. 83.2 sq. metres (895.7 sq. feet)

McFarlane Sales & Lettings

McFarlane Sales & Letting Ltd, 28-30 Wood Street – SN1 4AB

01793 296880 • oldtown@mcfarlaneproperty.com • www.mcfarlaneproperty.com/

mcfarlane
property.com