



35 Trecastle Road, Swindon

Swindon

£330,000

mcFarlan
property.co

35 Trecastle Road

Swindon, SN1

Welcome to this charming three bedroom semi-detached home on Trecastle Road in the sought-after East Wichel development. The inviting entrance hall leads to a well equipped kitchen/breakfast room, a convenient cloakroom, and a bright, airy living room with French doors opening onto a low maintenance rear garden. Upstairs, you'll find two generous bedrooms accompanied by a modern family bathroom, while the spacious main bedroom on the top floor boasts an en-suite shower room and a dressing area with fitted wardrobes. Completing the property is a garage, driveway parking, and an enviable location close to local schools, shops, and green spaces, with excellent connectivity via Junction 16 of the M4. An ideal family home in a great community awaits you.





35 Trecastle Road

Swindon, SN1

This charming three-bedroom semi-detached home in East Wichel offers a modern kitchen/breakfast room, cloakroom, and a bright living room with French doors to a low-maintenance garden. Two spacious bedrooms and a family bathroom sit on the first floor, with a stunning en-suite main bedroom above. Garage, driveway & great location! Council Tax band: D

Tenure: Freehold

EPC Energy Efficiency Rating: B

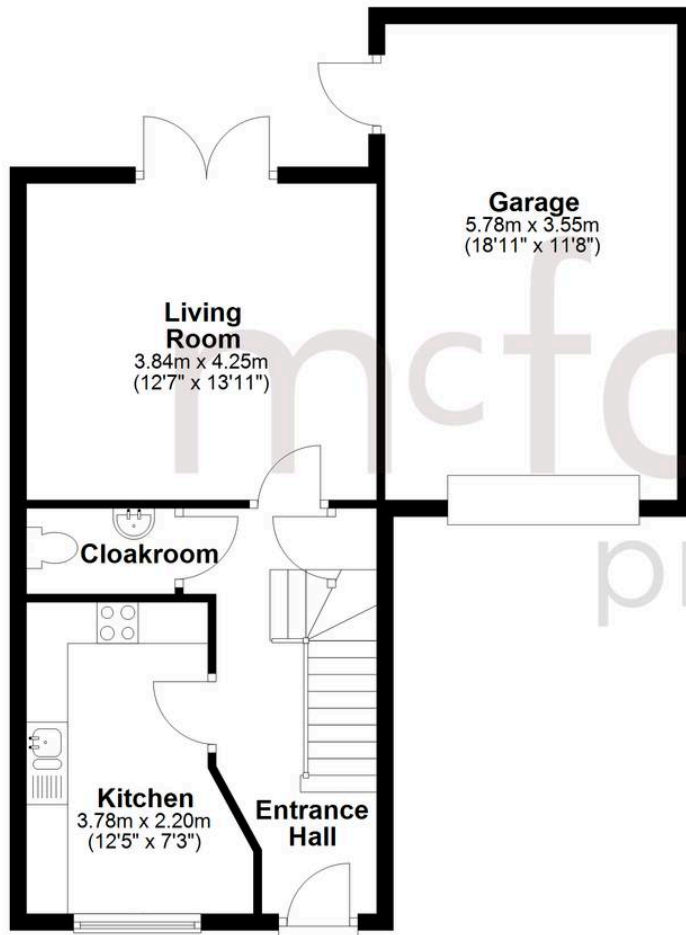
EPC Environmental Impact Rating: B



- BEAUTIFULLY PRESENTED THROUGHOUT
- GARAGE & DRIVEWAY PARKING
- EN-SUITE TO MASTER
- GENEROUS LIVING ACCOMODATION
- WICHELSTOWE LOCATION
- STUNNING VIEWS

Ground Floor

Approx. 58.6 sq. metres (630.5 sq. feet)



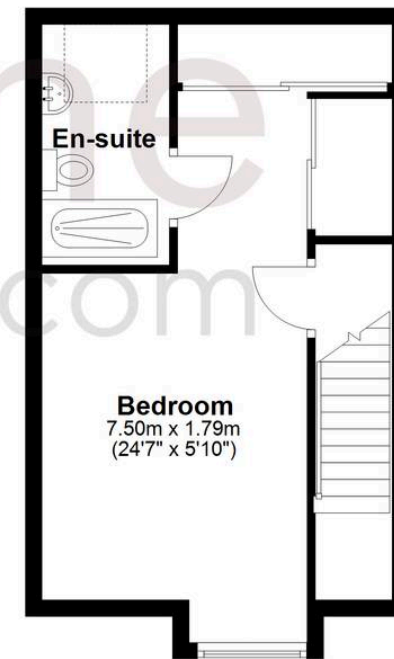
First Floor

Approx. 38.6 sq. metres (415.2 sq. feet)



Second Floor

Approx. 30.4 sq. metres (327.6 sq. feet)



Total area: approx. 127.6 sq. metres (1373.3 sq. feet)

McFarlane Sales & Lettings

McFarlane Sales & Letting Ltd, 28-30 Wood Street – SN1 4AB

01793 296880 • oldtown@mcfarlaneproperty.com • www.mcfarlaneproperty.com/

mcfarlane
property.com