



Moseley, Sillars Green, Tetbury Road

Malmesbury

£309,995

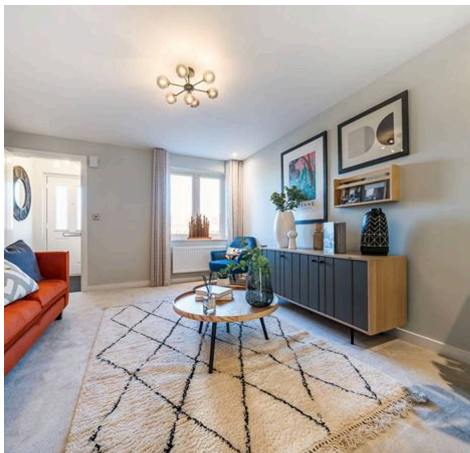


Moseley, Sillars Green

Tetbury Road, Malmesbury

Nestled in a charming neighbourhood, this stunning end of terrace house presents itself as a tastefully decorated new build, boasting modern amenities and eco-friendly features such as solar panels. As you step inside this captivating abode, you are welcomed by an airy and spacious layout, featuring an open plan kitchen, dining, and living area that is sure to be the heart of the home. The main bedroom, extending over 15 feet, offers a luxurious retreat for relaxation after a long day. With three bedrooms in total, this property provides ample space for a growing family or those who enjoy having extra room for guests. Convenience is key with two designated parking spaces and a WC for added functionality.

- NEW BUILD
- SOLAR PANELS
- MID TERRACE
- OVER 15FT MAIN BEDROOM
- OPEN PLAN KITCHEN/DINING/LIVING
- THREE BEDROOMS
- 2 PARKING SPACES
- WC



Entrance Hall

Kitchen/Dining/Living Room

22' 2" x 12' 2" (6.75m x 3.71m)

WC

Landing

Bedroom 2

7' 10" x 12' 2" (2.39m x 3.71m)

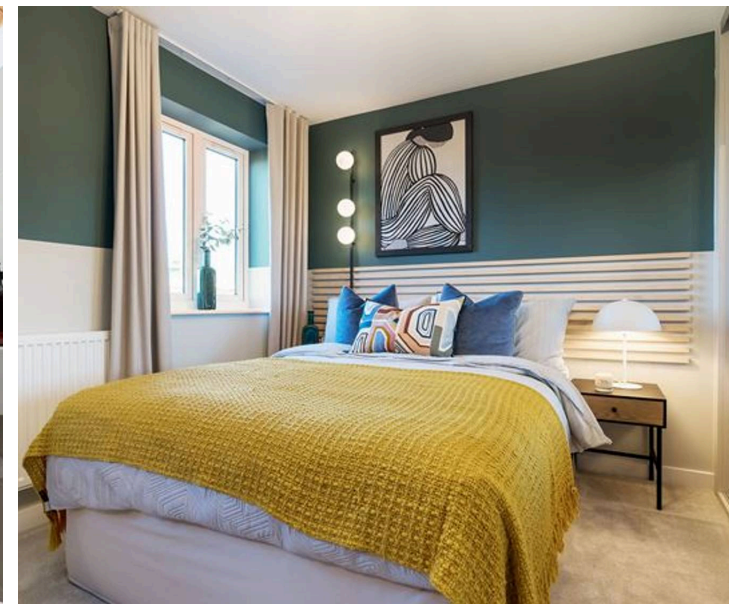
Bedroom 3

7' 9" x 12' 2" (2.36m x 3.71m)

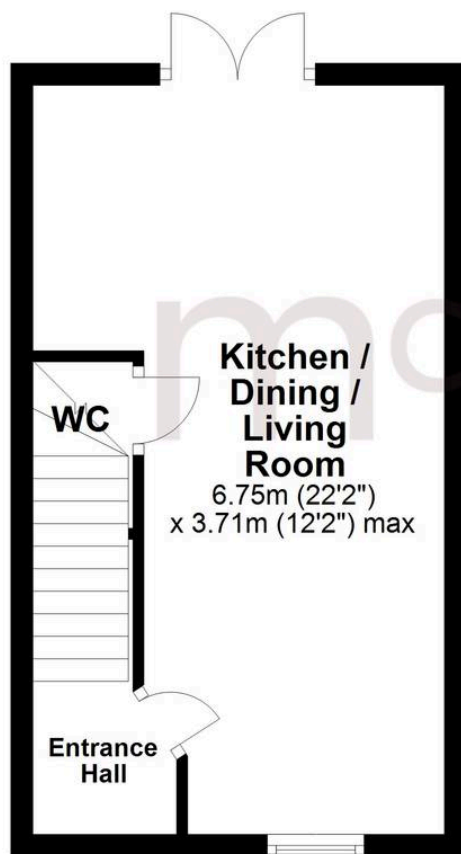
Bathroom

Bedroom 1

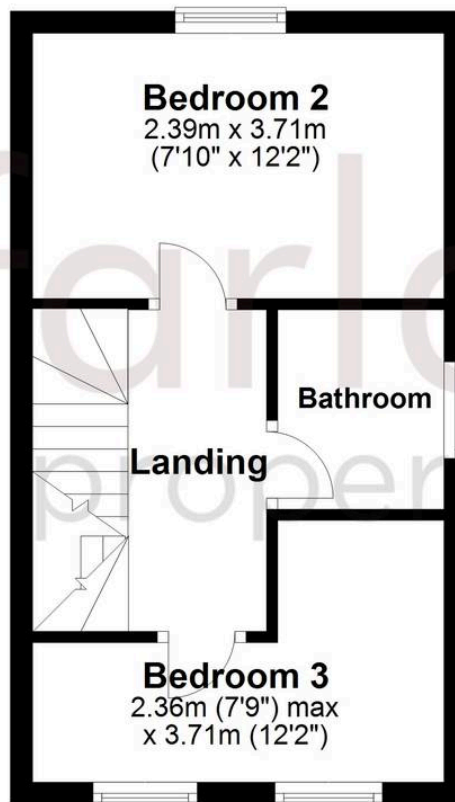
15' 7" x 9' 0" (4.75m x 2.75m)



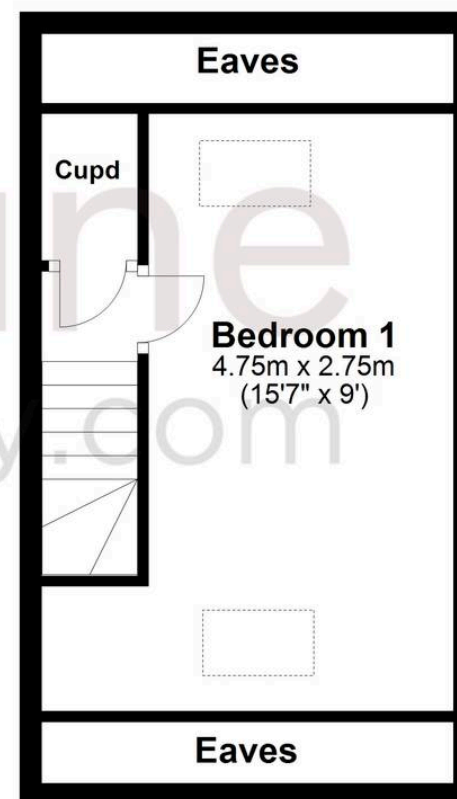
Ground Floor



First Floor



Second Floor



McFarlane Sales & Lettings

McFarlane Sales & Letting Ltd, 28-30 Wood Street – SN1 4AB

01793 296880 • oldtown@mcfarlaneproperty.com • www.mcfarlaneproperty.com/