



107 Islandsmead, Swindon

Swindon

£240,000

mcFarlan
property.co.uk

107 Islandsmead

Swindon, SN3

Situated at the end of a quiet walkway in Eldene, this well-appointed three-bedroom family home offers spacious living. With a bright conservatory, large living areas, and a four-piece bathroom, it's ideal for families. South-facing rear garden, local amenities, schools, and great transport links nearby.

Council Tax band: B

Tenure: Freehold

EPC Energy Efficiency Rating: D

EPC Environmental Impact Rating: D



mcfarlane



m



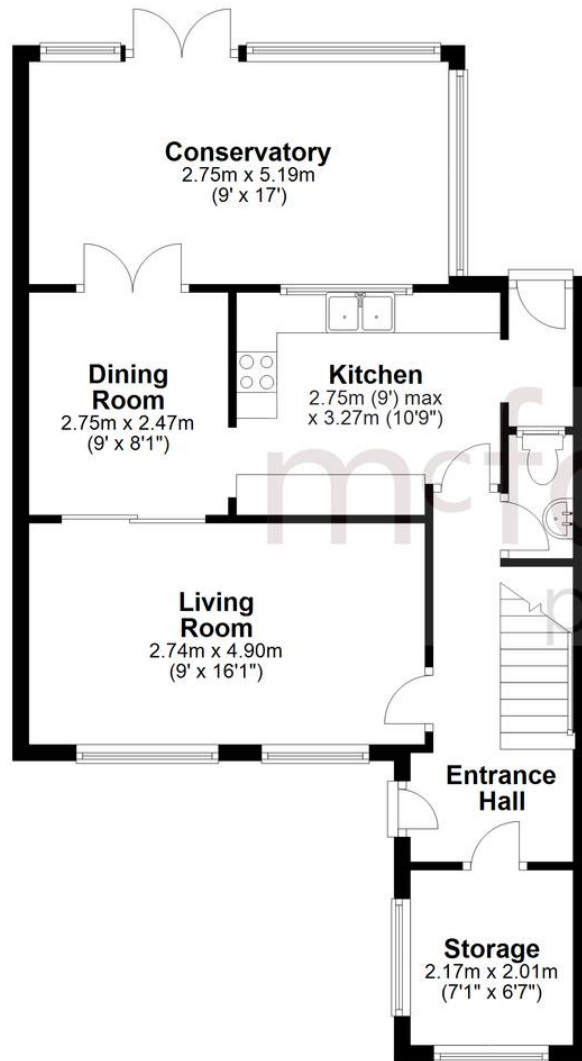
107 Islandsmead Swindon, SN3

- ELDENE LOCATION
- THREE BEDROOMS
- END TERRACE
- FRONT & REAR GARDEN
- NO ONWARD CHAIN
- BUILT IN STORAGE



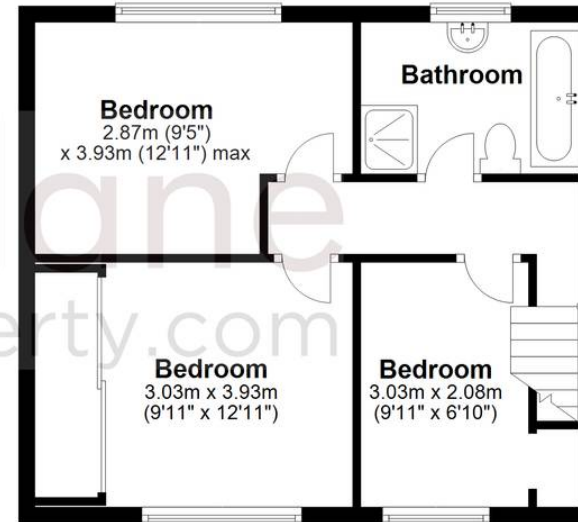
Ground Floor

Approx. 59.9 sq. metres (644.9 sq. feet)



First Floor

Approx. 40.3 sq. metres (434.1 sq. feet)



Total area: approx. 100.2 sq. metres (1079.0 sq. feet)

McFarlane Sales & Lettings

McFarlane Sales & Letting Ltd, 28-30 Wood Street - SN1 4AB

01793 296880 • oldtown@mcfarlaneproperty.com • www.mcfarlaneproperty.com/

mcfarlane
property.com